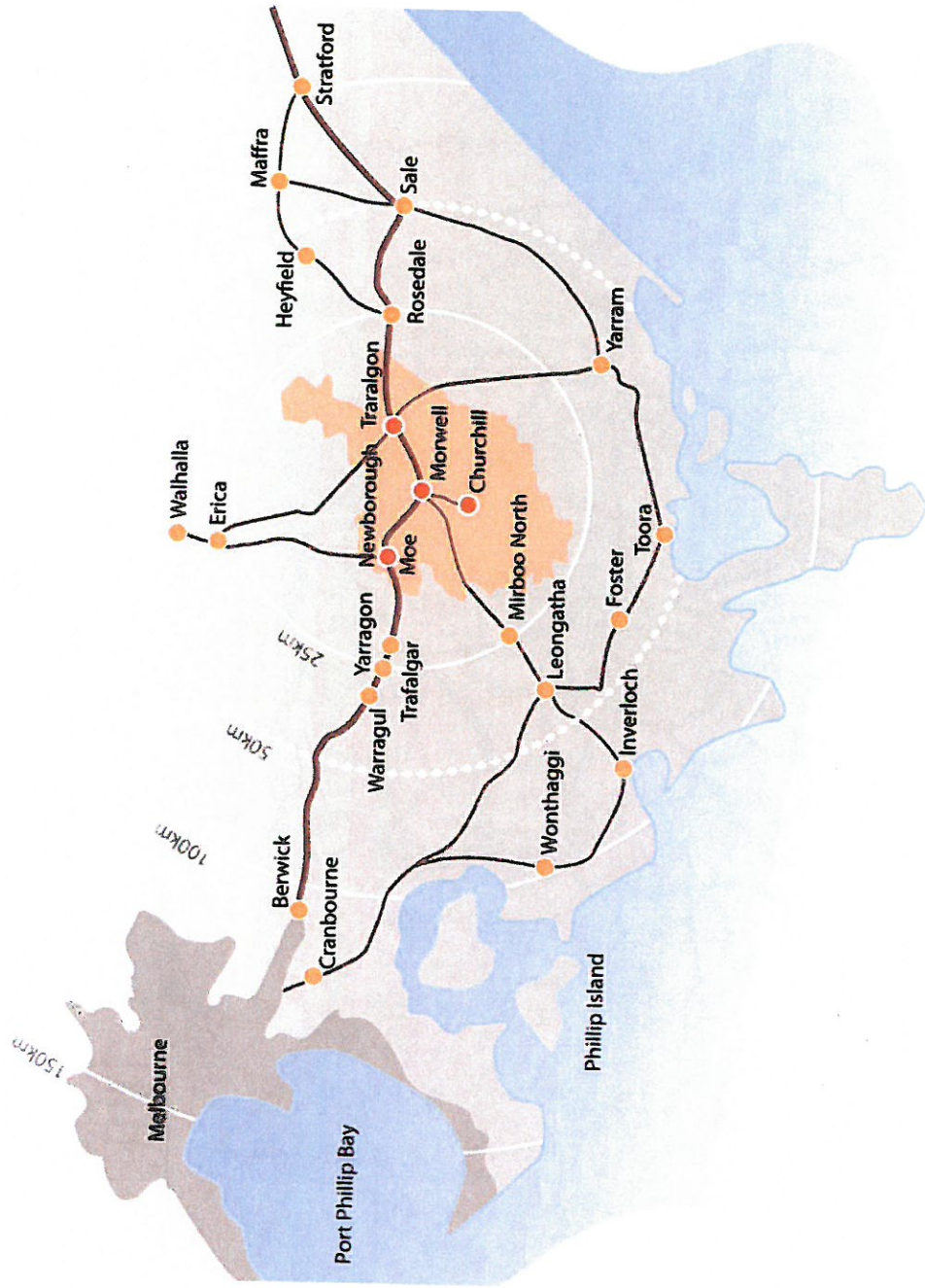
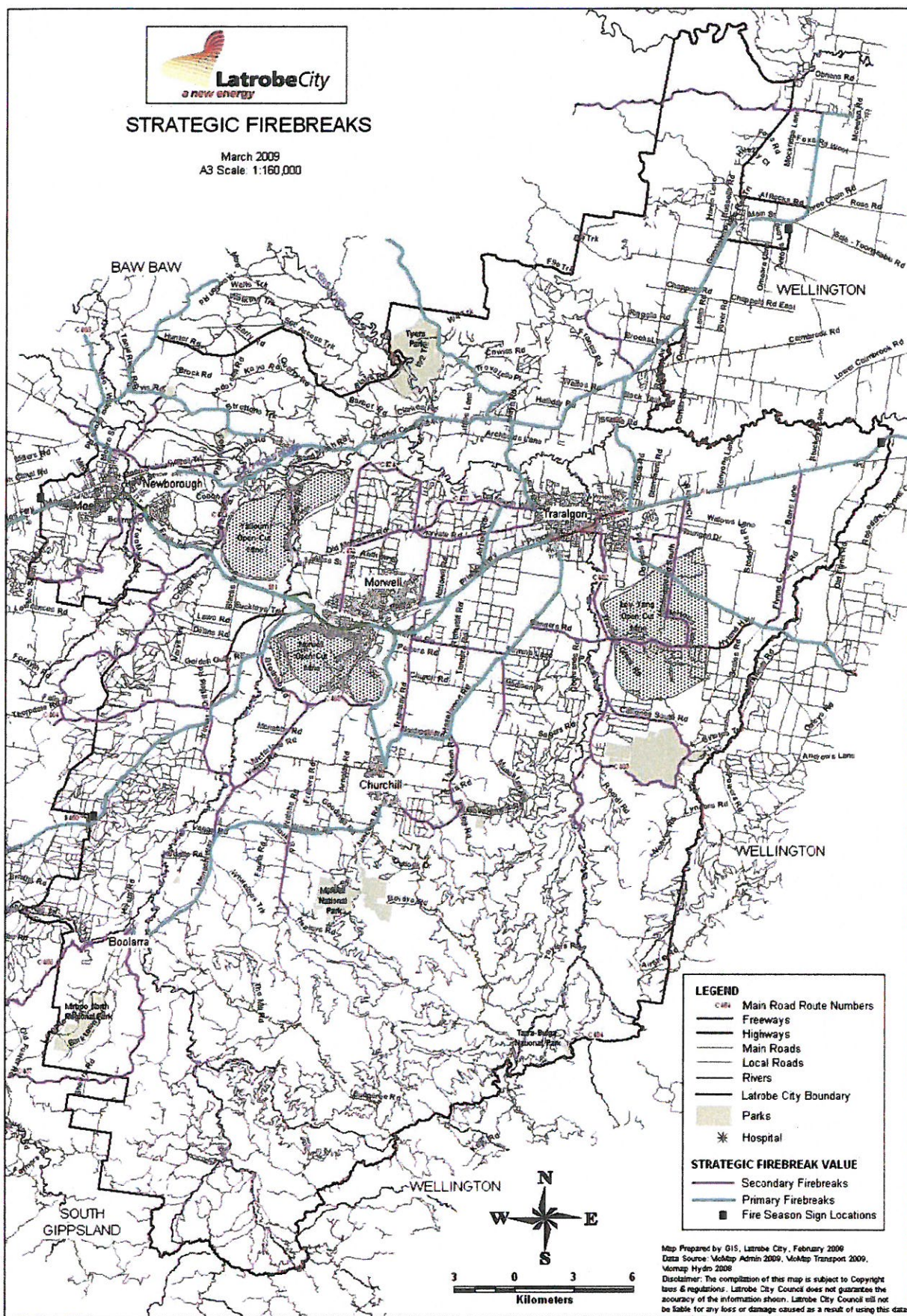
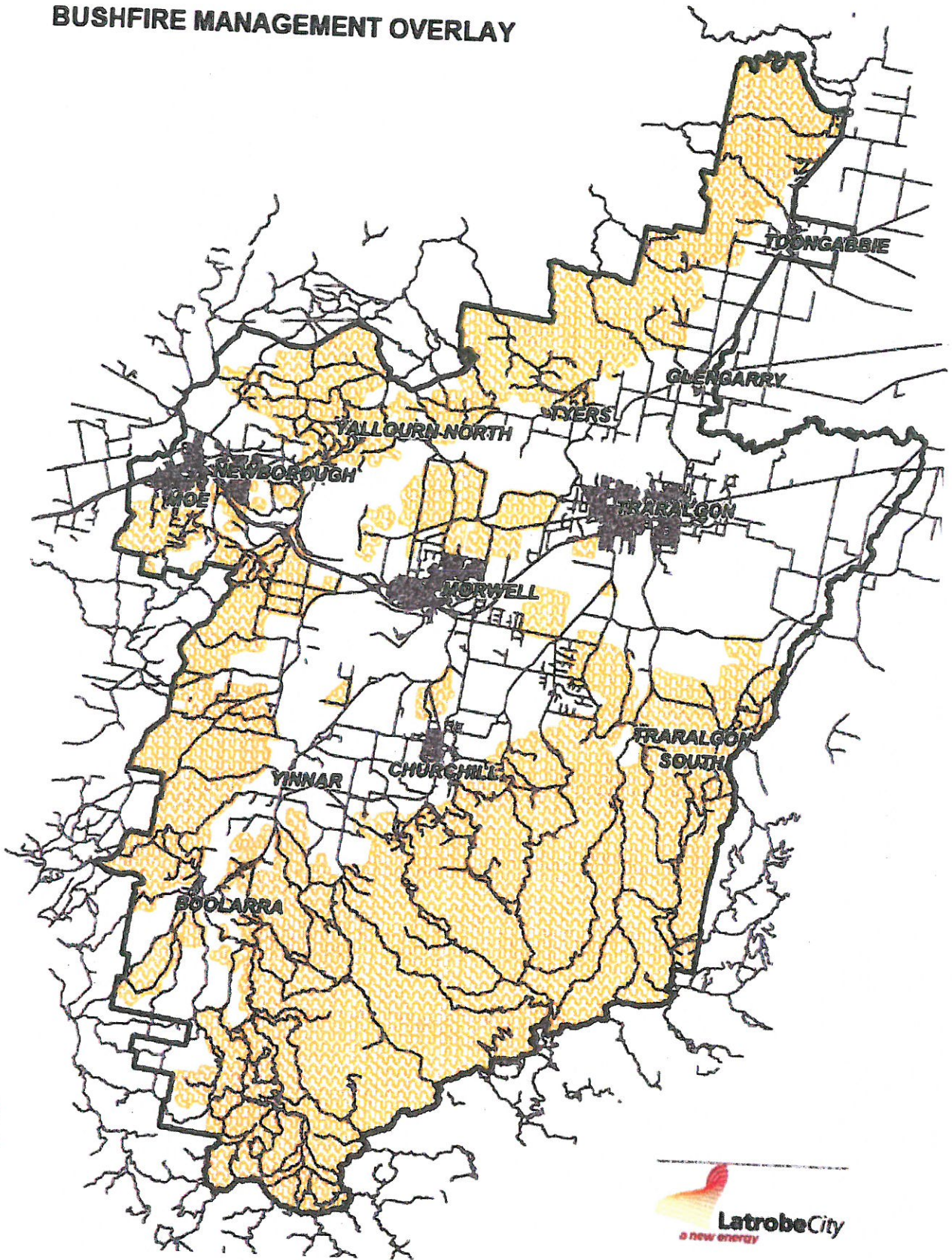


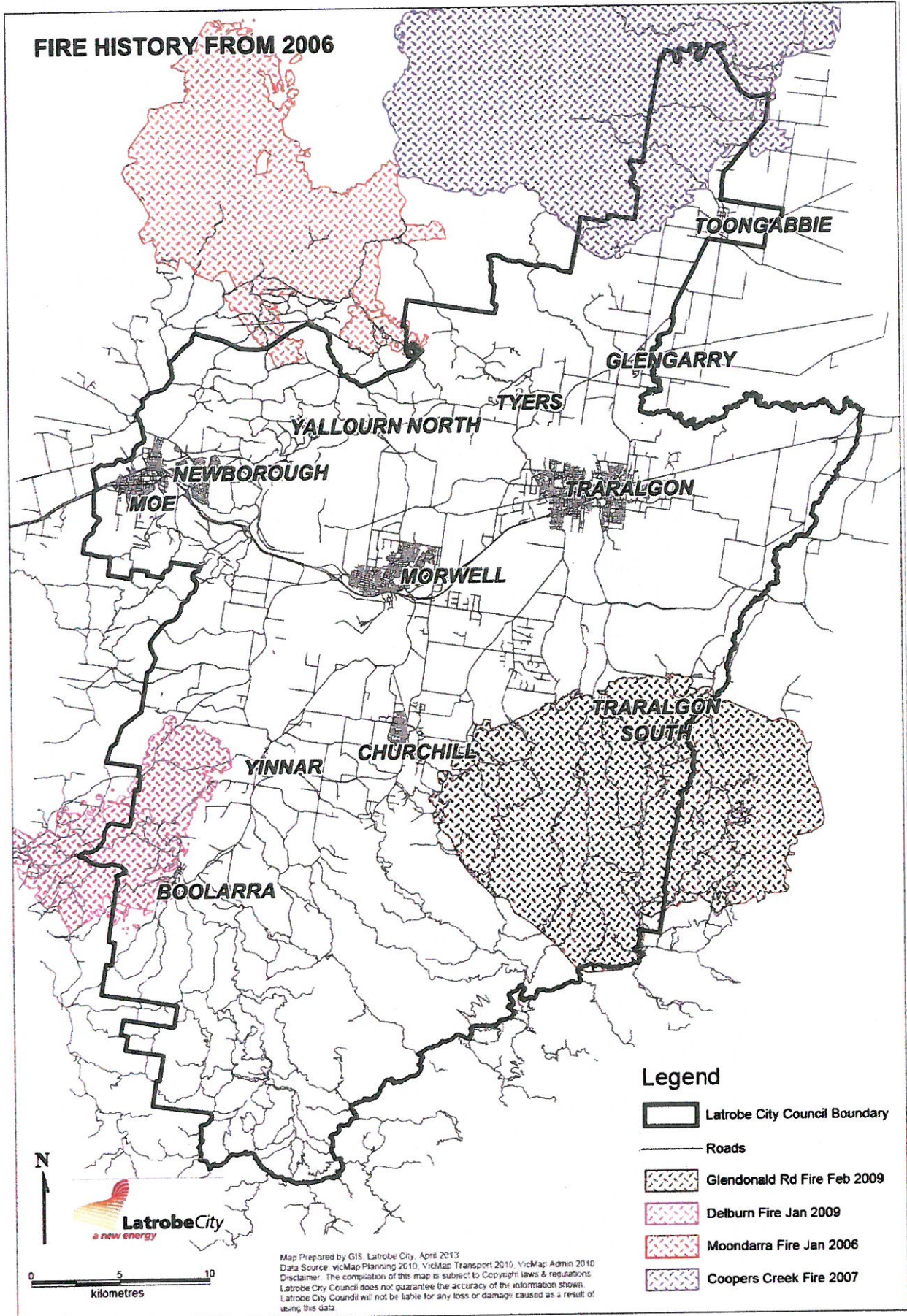
Map 1 – Latrobe City



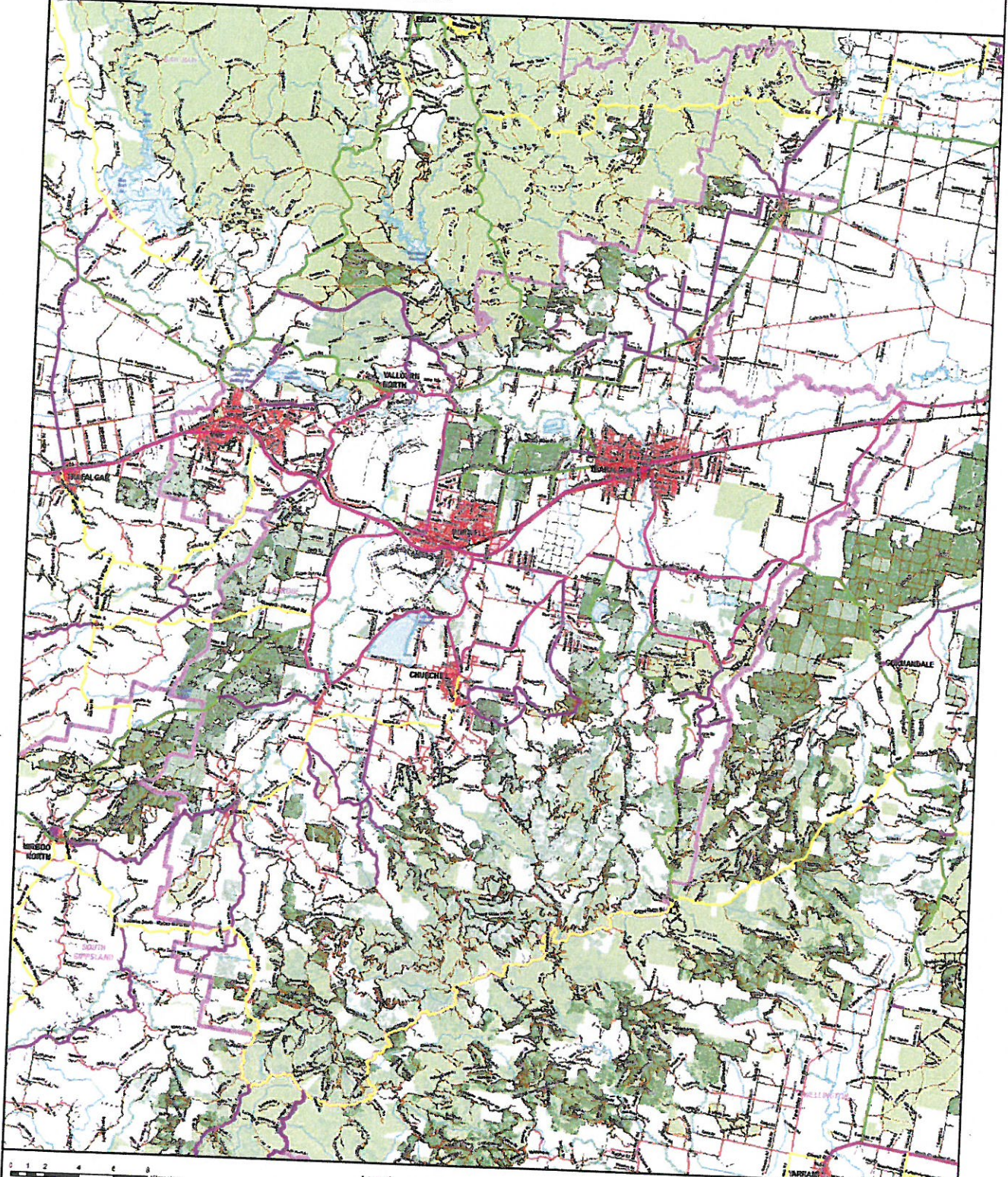


BUSHFIRE MANAGEMENT OVERLAY





Latrobe City - Road Classification



0 2 4 6 8 Kilometers

Objectives and Purpose of Road Classification
 Objectives: To provide a clear and consistent system for the classification of roads management and engineering agencies.
 The system will provide a clear and consistent system for the classification of roads throughout the Latrobe City LGA Council as follows:

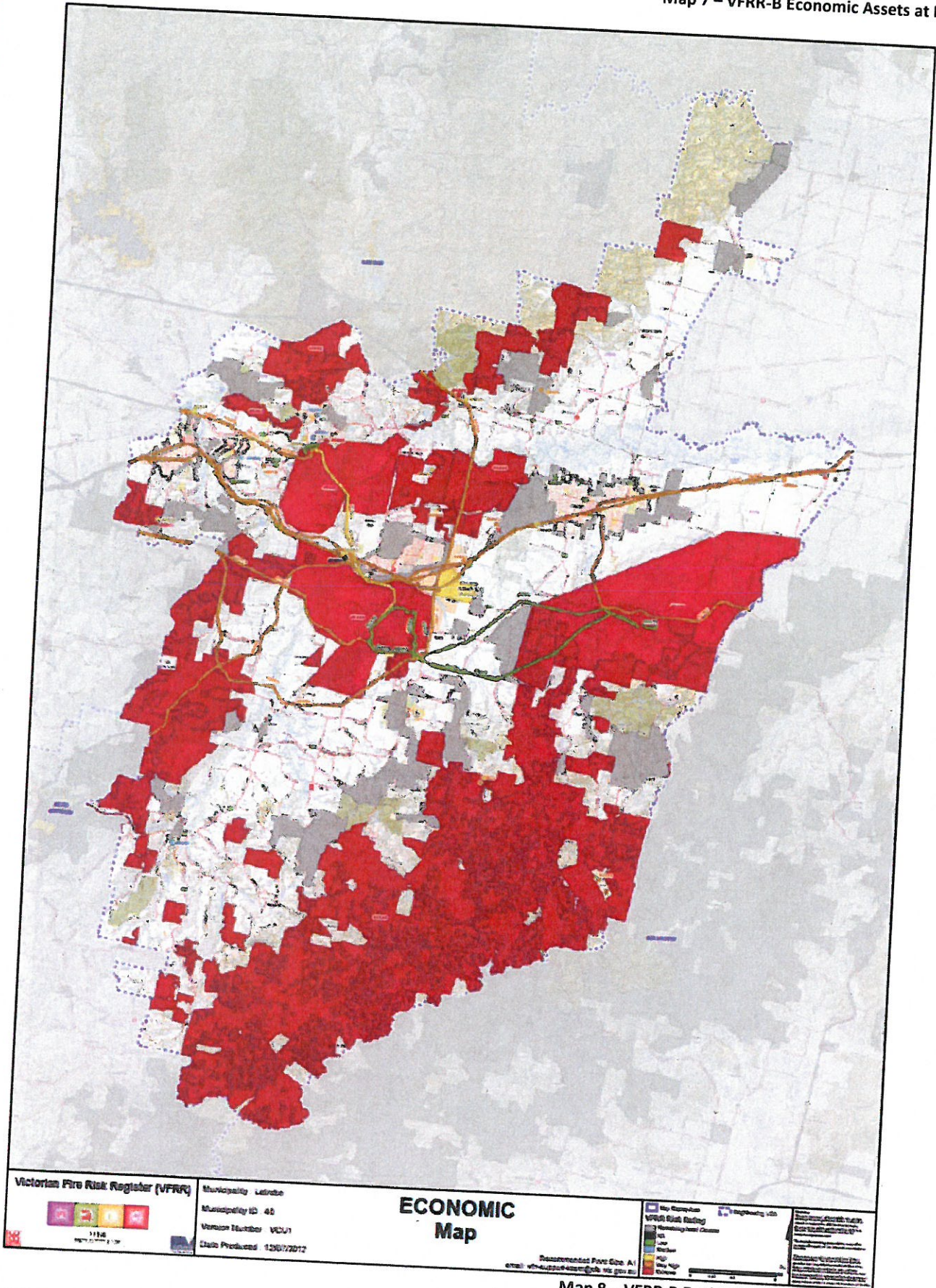
Road Classification	General Order	Permitted Access	Vehicle Description/Restrictions
National	Class 1	Open to all vehicles	Open to all vehicles
Regional	Class 2	Open to all vehicles	Open to all vehicles
State	Class 3	Open to all vehicles	Open to all vehicles
LGA Boundaries	Class 4	Open to all vehicles	Open to all vehicles

Legend

Classifications	Roadways	Local Sealed	Rail Station Operational	Perennial Waterbody	Hard Wood
Municipal	Freeway	Road Private Access	Rail Operational	Intermittent Waterbody	Soft Wood
National	Highway	Local Unknown	Watercourses	Wetland / Swamp	Not Planted
Regional	Arterial Sealed	Road 4WD	Rivers		Native Vegetation
State	Arterial Unsealed	Road Proposed	Streams		Public Land
LGA Boundaries	Local Unsealed	Walking or Bike Path	Drains and Channels		Built Up Areas



Map 7 – VFRR-B Economic Assets at Risk³⁴



Map 8 – VFRR-B Environmental Assets at Risk³⁵

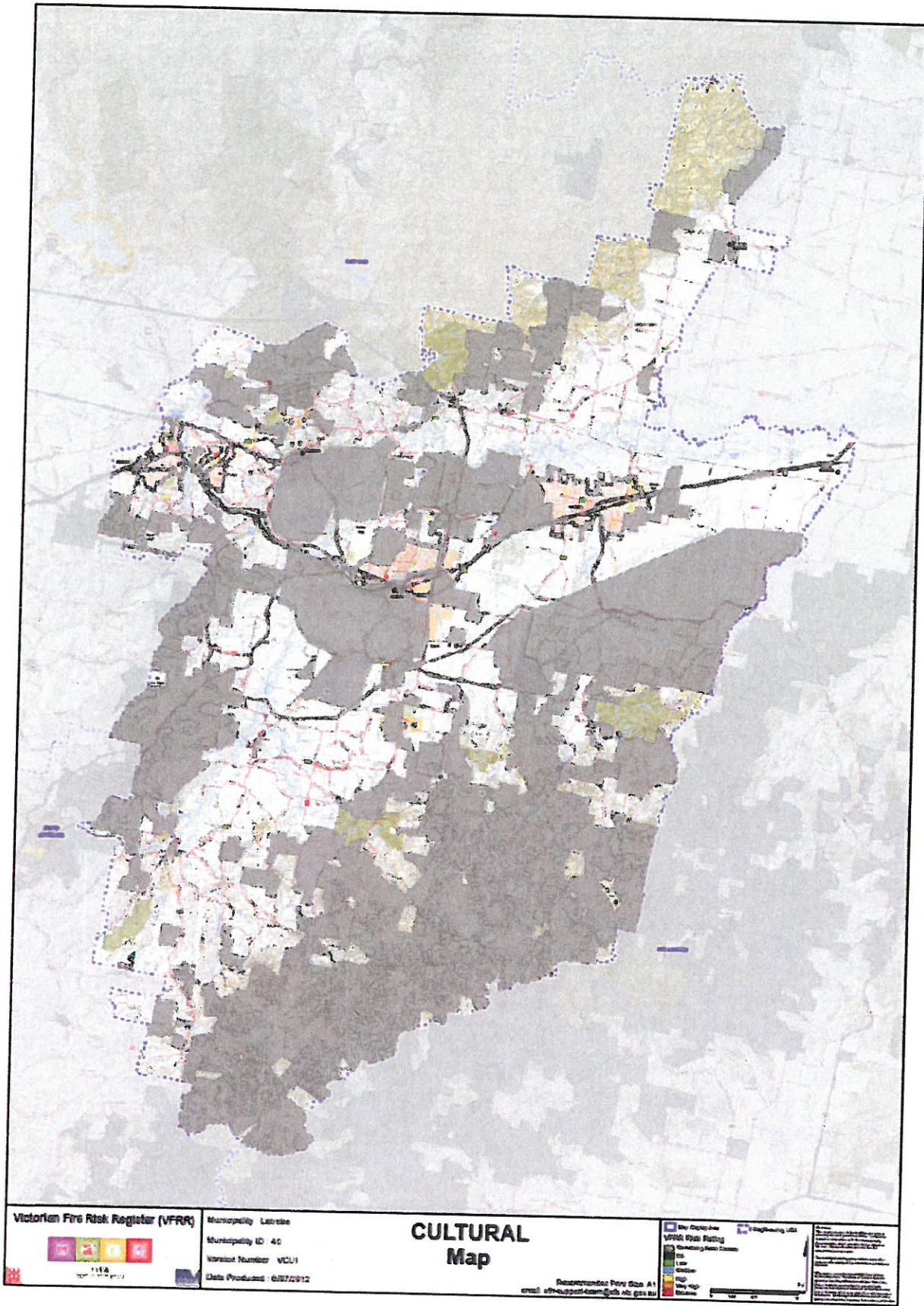
³⁴ This map is to be read in conjunction with Attachment A-1 Register of Assets at Risk – Bushfire

Map 8 – VFRR-B environmental Assets at Risk³⁶



³⁵ This map is to be read in conjunction with Attachment A-1 Register of Assets at Risk – Bushfire

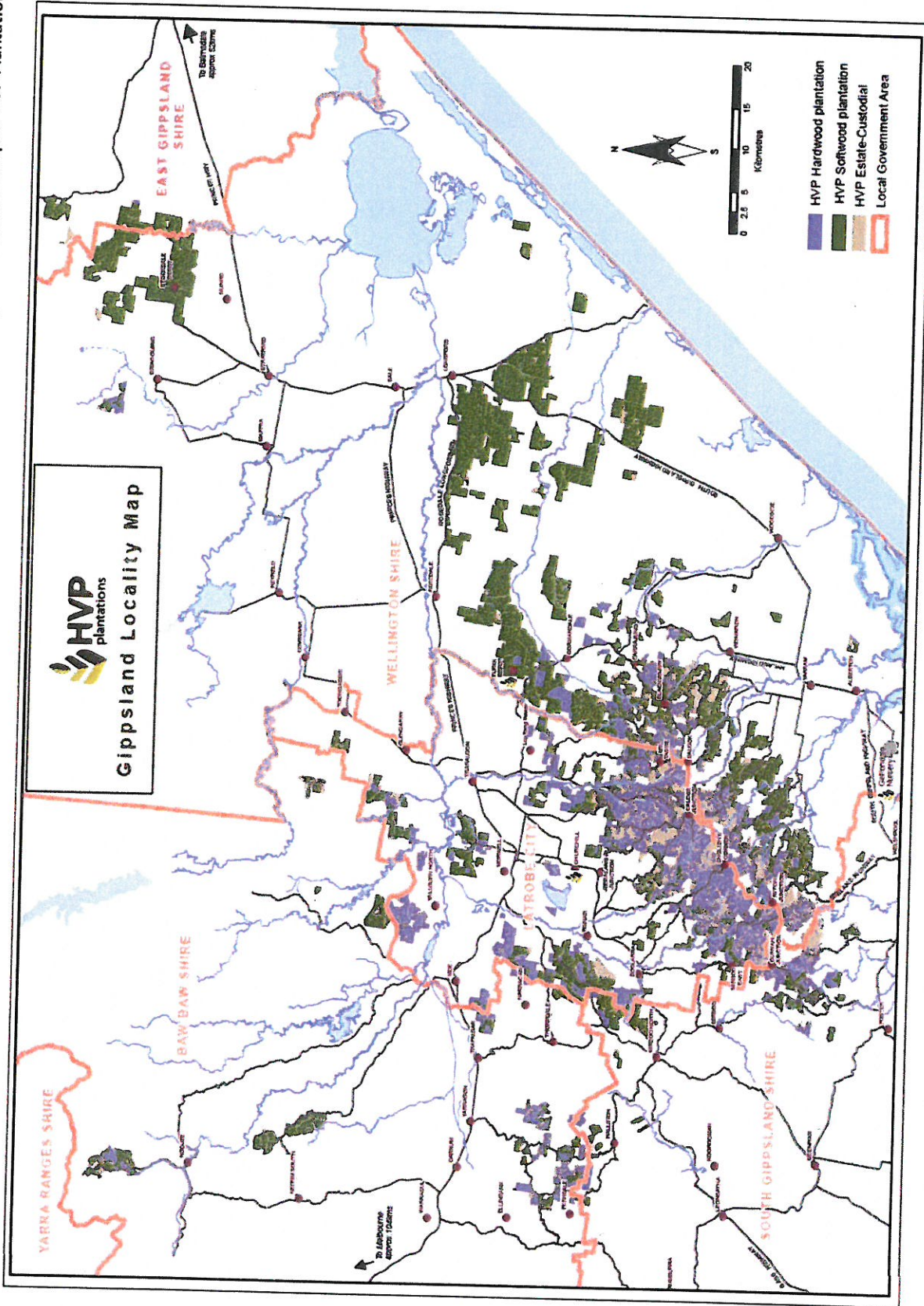
³⁶ This map is to be read in conjunction with Attachment A-1 Register of Assets at Risk – Bushfire



³⁷ This map is to be read in conjunction with Attachment A-1 Register of Assets at Risk – Bushfire



Map 10 – Overview Map of HVP Plantations – Gippsland



Attachment F – Links to other plans

Quick Find by Organisation type	Owner	Plan Name and Year Issued (Amended)	Year issued / Plan Life	Multi-agency	Links to Business Plans for resource allocation	Fire hazards	Fire use
Bulk Water Supply	Southern Rural Water	Yallourn Weir Fire Management Plan					
Bulk Water Supply	Southern Rural Water	Lake Narraean Reservoir Fire Management Plan					
Paper Industry	Australian Paper Products	Maryvale Mill Fire Management Plan, Operations Plan for Fire Prevention					
Emergency Services Organisation	CFA: District 10	Coal Mines Tactical Response Plans	Y - 3	Y	N	All	Suppression
Emergency Services Organisation	CFA: District 10	District Operational Management Plans		Y	N	All	Suppression
Emergency Services Organisation	CFA: District 10	Pre incident Plans - CFA brigades have PIP's for significant risk within their area and Brigade sub-plans.					
Schools – Public	DEECD	Schools Closure Plan - Bushfire					
Emergency Services Organisation	DHS	Heatwave Plan					
Emergency Services Organisation	DHS	Regional Recovery Plan					
Emergency Services Organisation	DEPI	Fire Management Plans (Fire Operations Plans)	Y		Y	All	
Emergency Services Organisation	DEPI	Fire Management Plans (Fire Operations Plans)	Annually, 3 Yrs rolling	Y	Y	Bushfire	Ecological, Fuel Management, Suppression
Emergency Services Organisation	DEPI	Gippsland Regional Fire Protection Plan (cover all Districts)	1999 - 10	N	Y	Bushfire	Ecological, Fuel Management
Emergency Services Organisation	DEPI/PV	Road Management Plan					
Mining/Energy/Industry	Ecogen Energy	Conservation Reserves Management Strategy					
Mining/Energy/Industry	Energy Brix	No formal document for Jeeralang A & B Power Stn					
Plantation Managers	HVP	Morwell Power & Briquette Factory?plan					
Plantation Managers	HVP	Fire Protection Plan – Strategic Document	Annual	No	No	Bushfire	Preparation, Suppression
Plantation Managers	HVP	Fire Operations Folders					
Mining/Energy/Industry	IP GD Suez	Fire Strategy and Management Plan	2011 - 1	N	Y	Bushfire	Prevention, Preparation, Suppression
Municipality	Latrobe City Council	Fire Management Plans – Hazelwood Power Stn, Morwell Open Cut, Loy Yang B Power Stn					
Municipality	Latrobe City Council	Code of Practice – Training of Personnel					
Municipality	Latrobe City Council	Electric Line Clearance Tree Management Plan, Procedures					
Municipality	Latrobe City Council	Fire Prevention Works Plans					
Municipality	Latrobe City Council	Municipal Emergency Management Plan	- 3	Y	Y	All	Suppression
Municipality	Latrobe City Council	Municipal Fire Prevention Plan	2011 - 3	Y	Y	All	Prevention, Preparedness
Municipality	Latrobe City Council	Recovery Plan					
Community	LEAP Planning Group	Road Management Plan 2009/2013	2009 - 4	N	Y		
Community	Tyers Community Group	Boolarra & Yinnar District LEAP	Under development	N	N	P, P	
Community	LEAP Community Association Inc	Latrobe City Council - Municipal Emergency Management	2012	N	N	All	All
Community	CATS Community Group	Latrobe City Council - Municipal Emergency Management	2012	N	N	All	All
Mining/Energy/Industry	Loy Yang Power	Callignee Taralgon South LEAP	Under development	N	N	All	All
Emergency Services Organisation	Police	Latrobe City Council - Municipal Emergency Management					
Emergency Services Organisation	Police	Loy Yang Mine & surrounds Fire Risk Management Plan					
Electricity Utility	SP AusNet - Distribution	Divisional Emergency Response Plans	Y - 2	Y	Y	All	
Electricity Utility	SP AusNet - Distribution	Gippsland Emergency Response Plan	2011				
Electricity Utility	SP AusNet - Distribution	Bushfire Mitigation Manual					
Electricity Utility	SP AusNet - Distribution	Bushfire Mitigation Plan	Y - 1	No	Yes	Bushfire	
		Bushfire Mitigation Procedures & Form					
		Vegetation Management Plan & Procedures					

Quick Find by Organisation type	Owner	Plan Name and Year Issued (Amended)	Year Issued / Plan Life	Multi-agency	Links to Business Plans for resource allocation	Fire hazards	Fire use
Electricity Utility	SP AusNet - Distribution	Bushfire Mitigation Strategy					
Electricity Utility	SP AusNet - Transmission	Guidelines for the Safety of Fire & Emergency Services Operating in the Vicinity Extra High Voltage Transmission Assets Network Management Plan					
Electricity Utility	SP AusNet - Transmission	Transmission Line Maintenance plans (Regional subset of State)	Y-1	N	Y	Bushfire	
Electricity Utility	SP AusNet - Transmission	Vegetation Management Plan & Procedures	Y-1	N	Y	All	
Telcel	Telstra	Asset Protection Plans					
Mining/Energy industry	Energy Australia (previously TRU Energy) (Yalourm W Power stn, Yalourm Open Cut, TXU)	Emergency Management Policy & Instructions Bushfire Mitigation Plan Latrobe Valley Open Cut Mines Service Policy & code of Practice Yalourm W Power Stn Mitigation Manual Power Stn Emergency Response Plan Mine Emergency Response Plan TRUEnergy/CFA Emergency Response Agreement					
Rail	VLine	Fire Prevention Plan	Y-1	N	Y	Bushfire	Prevention, Preparedness
Rail	VLine	Annual Fire Prevention Works	Y-1	N	Y	Bushfire	Prevention, Preparedness