

Morwell mine fire update

The bushfire that started west of Morwell and spread into the Morwell mine on the afternoon of Sunday 9 February continues to burn, producing significant smoke and ash that is impacting on surrounding communities.

This is one of the most serious fire situations ever confronted at the Morwell mine and GDF SUEZ Hazelwood is working closely with the CFA and MFB to extinguish smouldering mine faces as quickly as we can. I cannot speak too highly of all those who have worked tirelessly to first bring the fire under control and who are now tackling the challenging task of extinguishing the fire.

At the same, we fully understand the inconvenience and concern that the smoke from the fire has caused for people living in surrounding areas. As several other Victorian communities have experienced in recent times as a result of major bushfires, the level of smoke is directly related to the severity and intensity of the fires. I assure you that GDF SUEZ Hazelwood is committed to working with all relevant authorities to reduce the level of smoke as quickly as we can.

There are many questions being asked in the community about various aspects of the fire and the fire-fighting response. This open letter to the Latrobe Valley community aims to answer some of those key questions.

● What is the current status of the fire?

The fire has been contained but continues to burn on two worked out faces of the mine. An area of some 150 hectares has been affected, with the fire spread over some 2.5 km on three levels of the mine. The fire is a distance of some three kilometres from the mine operating face. The task now is to progressively extinguish the smouldering faces.

● What caused the fire and how was it able to spread?

While the cause of the fire will be the subject of investigations, it is believed that the fire was caused by embers entering the mine from the bushfire west of Morwell. This ember attack, fanned by high winds, is believed to have rapidly caused a number of spot fires across the Northern and South-eastern areas of the mine.

● Does Hazelwood have a fire prevention and protection strategy in place?

Yes, GDF SUEZ Hazelwood has a comprehensive fire prevention and protection strategy incorporating a number of proactive processes in place including fire detection, fire prevention and fire mitigation measures. These processes include regular patrols, fire watch, fire alerts, and sprays to protect the operational and non operational areas and reduce dust levels in the mine's exposed coal faces. Hazelwood's focus is at all times on ensuring the safety of people, along with ensuring supply of power and protection of property and infrastructure.

● What is being done to extinguish the fire?

Some 200 CFA and MFB firefighters have joined with 80 mine personnel to jointly fight the fire around the clock over the past week and a half. The best available fire-fighting equipment sourced from all over Victoria and some from interstate has been brought to the fire-fight. This includes a range of aerial fire suppression involving long-line helicopters and sky-cranes.

● How long will that take?

It will take significant time and effort to extinguish as the coal needs to be cooled with large quantities of water being applied over an extended period to prevent re-ignition. Experience suggests it could take up to two weeks or more to completely extinguish.

● What is being done to reduce the level of smoke?

While the fire-fighting authorities are doing all they can to minimise smoke leaving the mine, weather and atmospheric conditions will be the major determinant of the level of smoke.

● Have fire-fighters been affected by carbon monoxide?

Ongoing monitoring of all those involved in the fire-fighting operation has resulted in a number of personnel being taken to hospital for testing and observation. There have been no reports of any serious impacts of carbon monoxide. Personal and area monitoring is continuing to ensure the safety of all those involved.

● Has the fire affected mining and power station operations?

Coal supply was interrupted in the initial stages when we lost power supply to the mine. However, this was quickly rectified and coal dredgers and power station generating units have been back in normal operation for more than a week.

● Will there be an investigation into the fire and its impact on surrounding communities?

Yes. An investigation will be conducted as soon as possible, taking into account the current focus on extinguishing the fire and ensuring the protection of people and property.

● Why Hasn't Hazelwood been represented at the two community meetings?

These meetings were principally called to provide information on any health concerns that local residents may have. Hazelwood has been working closely with the CFA and other agencies, by providing information as appropriate. In the case of these meetings, it was felt that health concerns of Morwell residents and Latrobe Valley communities are best handled by the appropriate health authorities.

● Where can I get more information?

A number of authorities have information lines to respond to specific queries. They are:

- Victorian Bushfire Information line **1800 240 667**
- Environment Protection Authority (EPA) **1300 372 842**
- Nurse on Call 24 hours a day, seven days a week **1300 606 024**
- Department of Health **1300 253 942**
- State Environment Health Unit **1300 761 874**

GDF SUEZ Hazelwood fully understands the Latrobe Valley community's concerns about the current situation. I assure you we are committed to continuing this major operation to extinguish the fire as quickly as we can.



George Graham
Asset Manager
GDF SUEZ Hazelwood



Morwell mine fire update

GDF SUEZ Hazelwood continues to work around the clock with all relevant authorities to combat the fire in the Morwell mine and reduce the level of smoke and impact on people living in the Latrobe Valley. The fire has been burning since 9 February as a result of a bushfire that started west of Morwell and spread into the mine.

It has been a hectic time on the ground for CFA, MFB, mine personnel and our contractor crews as they make significant inroads on the challenging task of extinguishing the fire. Over the past 72 hours crews have begun to gain the upper hand, with several milestones including significant blackening out of more than 300 metres of the Northern mine faces, more than 200 metres on the South-east faces and the establishment of improved water supplies to handle the increased demand for water.

We fully understand the inconvenience and concern that the smoke from the fire has caused people living in the surrounding areas, and again assure you that GDF SUEZ Hazelwood is working with all relevant authorities to reduce the level of smoke as quickly as we can.

This update aims to answer some of the questions being asked in the community.

● What is the current status of the fire?

The fire remains contained but continues to burn on two worked out faces of the mine.

CFA and MFB firefighters along with mine personnel and our contractors continue to jointly fight the fire around the clock, utilising the best available fire-fighting equipment sourced from all over Victoria and interstate.

Crews in the past few days have concentrated on fire suppression across the Northern areas of the mine. Our focus is to reduce the impact of smoke on the Morwell community, while ensuring the safety of all those involved in the fire-fighting operation. The use of CFA Strike Teams, crane monitors and aerial fire suppression appliances involving long-line helicopters and sky-cranes have been instrumental in progressing several hundred metres of blackening out activities in this area.

Despite the challenges of the weather, with rain and high winds late last week, significant progress has been made in blackening out fire affected areas on the Northern and South-eastern faces of the mine. The size of the fire has reduced considerably, with Infra-Red imagery taken daily by the CFA and MFB showing just how successful crews have been in their fire-fighting efforts.

● What are you doing to increase the capacity to fight the fire?

The commissioning of new fire services pumps (in addition to those already in place) has increased water availability for fire-fighting activities on the North-eastern area of the mine.

Vehicles from Tasmania and Australian Capital Territory Fire Services using 'Compressed Air Foam Systems' (CAFS) have also been assisting with fire suppression.

This type of 'A' class foam attacks carbon, allowing for better penetration and is ideal for the current circumstances in the Morwell mine. The foam contains less water than other foams, and is applied to the coal surface from within the vehicle.

Trials of CAFS in past days have proven successful with the suppression of smoke and heat on lower levels of the mine. This fire-fighting equipment will continue to be utilised.

● Did GDF SUEZ Hazelwood scrap pipes and other firefighting equipment that had been on the disused area of the mine?

No, that is completely untrue. The area to where the external bushfire first spotted has not been an operational part of the mine for at least 30 years. It is understood that de-commissioned pipelines (that is, pipelines that could not be used) were removed from this area some 27 years ago when the mine was operated by the former State Electricity Commission of Victoria, long before the mine and power station were sold as part of the Victorian electricity industry privatisation program.

● Is the mine likely to flood given the amount of water being used to fight the fire?

No, despite a significant amount of water being used in fire-fighting efforts, GDF SUEZ Hazelwood has a structure in place to manage the excess water levels within the mine. This includes the use of high flow dewatering pumps.

● There are reports of a significant crack in the Southern area of the mine. What are the implications?

A crack has appeared in the coal surface in the Southern area of the mine as a result of the fire. Cracking is common in the joints of coal when the current environmental factors – heat and water – are present.

GDF SUEZ Hazelwood is working with a team of geotechnical engineers to not only monitor the crack in the Southern area, but all coal surfaces which remain alight or have been affected by fire.

Geotechnical engineers are monitoring and working with firefighters to progressively cool the affected area allowing for remediation works to take place.

Our technical advice is that this crack can be effectively managed.

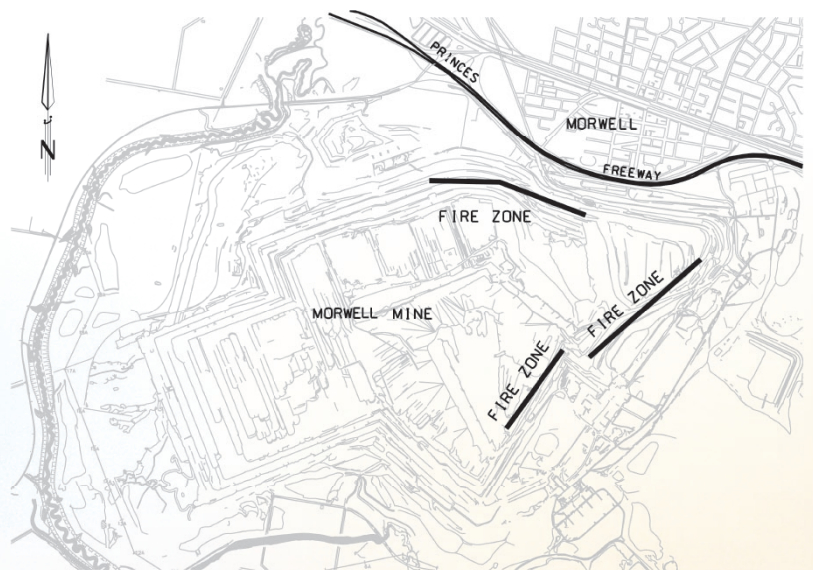
● Where can I get more information?

A number of authorities have information lines to respond to specific queries. They are:

- Victorian Bushfire Information line **1800 240 667**
- Environment Protection Authority (EPA) **1300 372 842**
- Nurse on Call 24 hours a day, seven days a week **1300 606 024**
- Department of Health **1300 253 942**
- State Environment Health Unit **1300 761 874**
- Latrobe City Council **1300 367 700**

This remains a challenging fire-fighting operation for everyone involved. GDF SUEZ Hazelwood understands the concerns in the community about the smoke associated with the fire. However, we must extinguish the fire in order to reduce the amount of smoke leaving the mine.

GDF SUEZ Hazelwood is co-operating fully with all agencies to address the impact of smoke on local communities. We remain committed to doing whatever we can to extinguish the fire as quickly as we can.



The fire on the Northern and South-eastern faces is one of the most serious fire situations ever confronted at the Morwell mine.

George Graham
Asset Manager
GDF SUEZ Hazelwood

GDF SUEZ

Morwell mine fire status update

Significant progress has been made with the challenging task of fire extinguishment in the Morwell mine. The work of GDF SUEZ Hazelwood mine personnel and contractors, along with CFA and MFB crews is being rewarded as the size of the fire decreases.

Fire activity at the Morwell mine has more than halved since fire spread into the mine on 9 February as a result of a bushfire that started west of Morwell. Thermal image line scans of the mine taken on 25 February show the progress which has been made over the past 16 days as we work to combat the fire and reduce the level of smoke and impact on people living in the Latrobe Valley.

The past 48 hours has challenged all involved. A change in wind direction and intensity late Tuesday afternoon impacted conditions in and around the Morwell mine, causing fire-fighting agencies to work on defensive strategies to maintain ground as the Hazelwood power station site came under ember attack. The efforts of all Hazelwood employees and contractors, along with CFA and MFB crews, were extraordinary under the circumstances. All involved in the fire-fighting effort worked tirelessly to stop the further spread of fire into operational areas as it drew within 200 metres of the power station, they are to be commended for their dedication. Tuesday afternoon can best be described as one of the biggest challenges of the fire-fight to date.

I can assure the communities of Morwell and the Latrobe Valley that GDF SUEZ Hazelwood continues to work with all relevant authorities to reduce the level of smoke as quickly as we can. We fully understand the inconvenience and concern that the smoke from the fire has caused people living in the surrounding areas, and in particular Morwell.

This update aims to answer some of the questions being asked in the community.

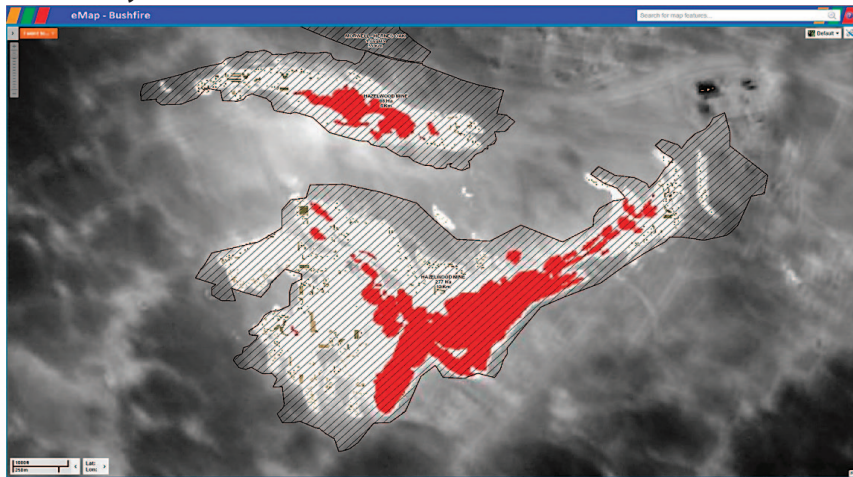
● What is the current status of the fire?

The fire remains contained but continues to burn on two worked out faces of the mine.

A grassfire caused by embers and flamed by hot, windy conditions on Tuesday afternoon between the mine and power station, was contained following the successful implementation of strategies by fire-fighting agencies to ensure asset protection. Utilising the best available fire-fighting equipment sourced from all over Victoria and interstate, ground crews were supported by aerial fire suppression appliances long-line helicopters and sky-cranes to prevent the further spread of fire. The power station and surrounding infrastructure was not damaged by the fire.

The use of 'Compressed Air Foam Systems' (CAFS), CFA Strike Teams, crane monitors and aerial fire suppression appliances continue to be instrumental in progressing

11 February



25 February



blackening out activities in the Northern areas of the mine. CFA and MFB firefighters, along with mine personnel and our contractors, continue to jointly fight the fire around the clock as we focus on reducing the impact of smoke on the Morwell community, while ensuring the safety of all those involved in the fire-fighting operation.

Despite the challenges the weather created on Tuesday afternoon, significant progress continues to be made in blackening out fire affected areas on the Northern and South-eastern faces of the mine.

● What mine rehabilitation work has been carried out in the areas of the mine affected by fire?

Mine rehabilitation work has been carried out in accordance with the mine's approved works plan. Since 1998, more than 23 million cubic metres of overburden, to a depth of around 50 metres, have been placed back into these worked out areas of the mine and a large section, measuring some 500 metres in length, has been fully rehabilitated with vegetation. The rehabilitation program is ongoing in accordance with the approved works plan.

● Where can I get more information?

CFA Information Bus

The CFA Information bus manned by CFA, EPA and Ambulance Victoria representatives is travelling to varied locations across Morwell and surrounding areas. Location advice is provided daily by the CFA.

Community Health Checks

A Community Health Assessment Centre is located at the **Ambulance Victoria Gippsland Regional Office, 2 Saskia Way Morwell**, next to the Mid-Valley Shopping Centre, 8am-8pm. Two nurses and two paramedics can offer basic health assessments, such as blood pressure, heart rate, temperature and basic respiratory checks such as chest sounds and respiratory rate.

Health concerns

Anyone with concerns about their health should seek medical advice or call Nurse on Call 24 hours a day, seven days a week **1300 606 024**.

Further information about smoke and health can be viewed at www.health.vic.gov.au or by calling **1300 253 942**.

Respite

A respite centre has been established at Moe Town Hall, Albert Street Moe, and is open to the community between the hours of 9am – 7pm.

Air quality

Air quality is being monitored by Environment Protection Authority (EPA), emergency services and Hazmat technicians. You can stay aware of the changing conditions via the EPA Website www.epa.vic.gov.au or by calling **1300 372 842**.

CFA mine fire updates

Up to date information on the mine fire can be viewed at www.cfa.vic.gov.au or by calling the Victorian Bushfire Information line on **1800 240 667**.

Latrobe City Council

A resident information campaign is being conducted by Latrobe City Council. Further information can be viewed at www.latrobe.vic.gov.au or by calling **1300 367 700**.

GDF SUEZ Hazelwood is co-operating fully with all agencies to address the impact of smoke on local communities. However, we must extinguish the fire in order to reduce the amount of smoke leaving the mine. We remain committed to doing whatever we can to extinguish the fire as quickly as we can.

George Graham
Asset Manager
GDF SUEZ Hazelwood

GDF SUEZ

Morwell mine fire status update

Fire activity at the Morwell mine continues to reduce in size as significant progress is made on the challenging task of fire extinguishment. Since the fire spread into the mine on 9 February as a result of a bushfire that started west of Morwell, GDF SUEZ Hazelwood mine personnel and contractors, along with CFA and MFB crews, have worked tirelessly around the clock to tackle fire suppression.

On any given day some 240 fire-fighting personnel (both professional and volunteers) working on a rotating two shift roster from Victoria's CFA and MFB, have been joined by counterparts from across Australia with crews from South Australia Metro Fire, Australian Capital Territory Fire Services, New South Wales Fire and Rescue, Tasmania Fire Service and Australian Aviation Fire Service who have left their family, home and community to help protect our community of Morwell and the essential infrastructure of Hazelwood power station and mine.

These men and women are working alongside some 100 GDF SUEZ Hazelwood mine personnel and contractors, and are supported by an army of support resources, including Ambulance Victoria Paramedics, CFA health support teams, Victoria Police and Department Environment and Primary Industries. Each of these agencies is putting countless resources behind the fire-fighting effort, ensuring that we combat the fire and reduce the level of smoke and impact on people living in the Latrobe Valley, and in particular Morwell.

Utilising the best available fire-fighting equipment sourced from all over Victoria and interstate, ground crews have access to some 40 individual fire-fighting appliance vehicles ranging from telebooms, pumper tanks, 'Compressed Air Foam Systems' (CAFS), crane and installation monitors. In addition, the teams behind the scenes are performing crucial roles. CFA Health support teams are undertaking Carbon Monoxide (CO) testing of all personnel involved in fire-fighting activities every two hours, while the Department Environment and Primary Industries catering contractor supplies on average 1,400 meals daily. Ensuring fire-fighters refuel the 21,000 kilojoules a day they use when actively fighting fires.

Local service providers and contractors are also contributing by sourcing equipment, produce and consumables from within the community of Morwell.

Many of our employees and contractors live in Morwell, and like all residents in the Latrobe Valley they too are suffering the same inconvenience and hold the same concerns as the broader community. As I have said to those employees who I have spoken with, GDF SUEZ Hazelwood will continue to do all we can to assist the relevant agencies to get this fire out as quickly as we can and limit any further impact.



Morwell mine fire incident: CFA Divisional Command and Hazelwood Emergency Command Staging Area.

This update aims to answer some of the questions being asked in the community?

• What is the current status of the fire?

The fire remains contained but continues to burn on two worked out faces of the mine.

Significant progress continues to be made in blackening out fire affected areas on the Northern and South-eastern faces of the mine. Increased nightshift resourcing, favourable weather conditions and continued use of Compressed Air Foam System (CAFS) resulted in significantly reduced fire activity over the past 48 hours.

Our focus, as it has been since day one, is to reduce the impact of smoke on the Morwell community, while ensuring the safety of all involved in the fire-fighting operation. The continued use of foam and water to suppress hot spots on the Northern areas of the mine is aiding in the reduction of smoke. Crews will continue to focus their efforts on the Northern face before they progressively move towards the Southern face of the mine ahead of predicted warm and dry conditions today and

Tuesday. With a forecast high of 33, ahead of a late change Tuesday evening, crews will again be tested as they aim to hold ground and continue to gain wins in fire suppression.

A water discharge management plan has been developed to monitor overall water management, with recirculating water being recycled to assist in ongoing fire suppression.

• Where can I get more information?

CFA Information Bus

The CFA Information bus manned by CFA, EPA and Ambulance Victoria representatives is travelling to varied locations across Morwell and surrounding areas. Location advice is provided daily by the CFA.

Community Health Checks

A Community Health Assessment Centre is located at the **Ambulance Victoria Gippsland Regional Office, 2 Saskia Way Morwell**, next to the Mid-Valley Shopping Centre, 8am-8pm. Two nurses and two paramedics can offer basic health assessments, such as blood pressure, heart rate, temperature and basic respiratory checks such as chest sounds and respiratory rate.

Health concerns

Anyone with concerns about their health should seek medical advice or call Nurse on Call 24 hours a day, seven days a week **1300 606 024**.

Further information about smoke and health can be viewed at www.health.vic.gov.au or by calling **1300 253 942**.

Respite

A respite centre has been established at Moe Town Hall, Albert Street Moe, and is open to the community between the hours of 9am – 7pm.

Air quality

Air quality is being monitored by Environment Protection Authority (EPA), emergency services and Hazmat technicians. You can stay aware of the changing conditions via the EPA Website www.epa.vic.gov.au or by calling **1300 372 842**.

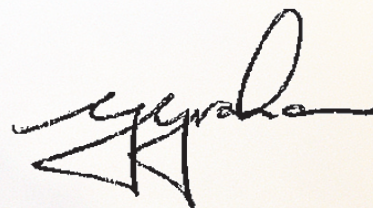
CFA mine fire updates

Up to date information on the mine fire can be viewed at www.cfa.vic.gov.au or by calling the Victorian Bushfire Information line on **1800 240 667**.

Latrobe City Council

A resident information campaign is being conducted by Latrobe City Council. Further information can be viewed at www.latrobe.vic.gov.au or by calling **1300 367 700**.

With some challenging weather on the horizon, all the agencies involved are preparing to maintain the fire containment. GDF SUEZ Hazelwood will continue to devote all the resources it can to support these agencies and the overall fire-fight.



George Graham
Asset Manager
GDF SUEZ Hazelwood

GDF SUEZ

Morwell mine fire status update

In my earlier update this week, I outlined the significantly reduced fire activity which occurred over the weekend. I am pleased to advise that the inroads made by day and night crews during this period have been further enhanced with approximately 85% of the fire now contained, due to favourable weather conditions and the excellent achievements by crews.

While this is good news, the challenges of the weather - warm temperatures and strong winds mid-week - forced fire services and GDF SUEZ Hazelwood to implement further strategies in preparation for yesterday morning's wind change. Among these was the further resourcing of two additional strike teams and water bombing helicopters bolstering current ground and aerial resources. These resources assisted in the protection of the boundaries of the mine, particularly the Northern area, ensuring the protection of Morwell South and the broader Morwell community. Pump appliances and earth moving equipment from Department of Environment and Primary Industries was positioned near key infrastructure surrounding the power station.

I have the greatest admiration for all those involved in the incident, including GDF SUEZ Hazelwood mine personnel and contractors, CFA and MFB crews, their fire-fighting counterparts from across Australia, along with all other support agencies, including the State Emergency Service (SES), Ambulance Victoria Paramedics, CFA health support teams, Victoria Police and Department of Environment and Primary Industries. As we enter day 25 of this incident, these crews have stuck heroically to the task of fire suppression in order to reduce the level of smoke and impact on people living in the Latrobe Valley, and in particular Morwell.

For the men and woman involved in the incident, their reward has come in reduced levels of smoke, and the respite that the fire suppression efforts have provided the community. Our focus, as it has been since day one, is to reduce the impact of smoke on the Morwell community, while ensuring the safety of all involved in the fire-fighting operation. The continued use of foam and water to suppress hot spots on the Northern areas of the mine is aiding in the reduction of smoke. Ground crews have been assisted by aerial support as they continue to target hot spots on the Southern face of the mine which continues to produce smoke.

Unfortunately, there appears to be some misinformation being spread in the community, particularly regarding fire service infrastructure in the mine. To clarify matters, here are the facts.

• Is it true that some fire service pipelines were incorrectly removed from the Northern batters?

That is incorrect. Prior to the sale of the mine the Hazelwood power station through the Victorian Government's privatisation program, the fire services pipework at the North-eastern end of the Northern batters had become unserviceable, resulting in leakages creating batter movements and other problems. The pipes were disconnected from the system and subsequently removed for re-use as drainage pipes. This was commenced by the State Electricity Commission of Victoria – the mine operator pre privatisation – in line with its Latrobe Valley Open Cut Fire Protection Policy.

In 2007/08, rehabilitation of a section of the Northern batters was undertaken by truck and shovel, where some of the exposed coal faces in this area were covered with clay. Site preparation works required the removal of power lines and remaining sections of inoperable fire services pipeline.

• If fire service pipelines and sprays were operating on the Western end of the Northern batters why did the fire spread?

The severity of the fire took out two separate power supply lines into the mine, which stopped the pumps used to supply water to the fire services system leaving only gravity fed pressures to fight the fire. Power was not restored until the following day, by which time fire protection pipelines in both the Northern and Eastern areas of the mine had been severely damaged, impacting our ability to contain the fire.

• Is the mine likely to flood given the amount of water being used to fight the fire?

No, despite a significant amount of water being used in fire-fighting efforts, GDF SUEZ Hazelwood has a structure in place to manage the excess water levels within the mine. This includes the use of high flow dewatering pumps.

Further water strategy measures have included the construction of two 500mm

diameter, 4.7 kilometre long polyurethane pipes with equipment on loan from Energy Australia's Yallourn mine. These pipelines will be used for additional dewatering activities in the mine. GDF SUEZ Hazelwood is appreciative of the support and resources provided by Yallourn and other local industry including, AGL Loy Yang A, during the firefight.

• Where can I get more information?

CFA Information Bus

The CFA Information bus manned by CFA, EPA and Ambulance Victoria representatives is travelling to varied locations across Morwell and surrounding areas. Location advice is provided daily by the CFA.

Community Health Checks

A Community Health Assessment Centre is located at the **Ambulance Victoria Gippsland Regional Office, 2 Saskia Way Morwell**, next to the Mid-Valley Shopping Centre, 8.00am-8.00pm. Two nurses and two paramedics can offer basic health assessments, such as blood pressure, heart rate, temperature and basic respiratory checks such as chest sounds and respiratory rate.

Health concerns

Anyone with concerns about their health should seek medical advice or call Nurse on Call 24 hours a day, seven days a week **1300 606 024**.

Further information about smoke and health can be viewed at **www.health.vic.gov.au** or by calling **1300 253 942**.

Respite

A respite centre has been established at **Moe Town Hall, Albert Street Moe**, and is open to the community between the hours of 9am – 7pm.

Air quality

Air quality is being monitored by Environment Protection Authority (EPA), emergency services and Hazmat technicians. You can stay aware of the changing conditions via the EPA Website **www.epa.vic.gov.au** or by calling 1300 372 842.

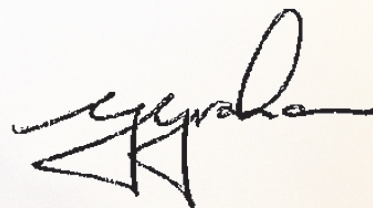
CFA mine fire updates

Up to date information on the mine fire can be viewed at **www.cfa.vic.gov.au** or by calling the Victorian Bushfire Information line on **1800 240 667**.

Latrobe City Council

A resident information campaign is being conducted by Latrobe City Council. Further information can be viewed at **www.latrobe.vic.gov.au** or by calling **1300 367 700**.

While it is still too early to say the fire-fight has been won, we are getting closer day by day and hopefully, with the right weather conditions, we will make further inroads by the end of the long weekend. On behalf of GDF SUEZ Hazelwood, I offer our heartfelt thanks to all those who have provided support during this difficult period.



George Graham
Asset Manager
GDF SUEZ Hazelwood



Morwell mine fire status update

Monday's announcement by Fire Services Commissioner, Craig Lapsley that fire activity at the Morwell mine is now listed as controlled, was welcomed by everyone involved over the past four weeks - the many fire-fighting personnel (both professional and volunteers) who have worked tirelessly around the clock, along with the GDF SUEZ personnel and contractors who have tackled the fire suppression challenge.

Their fantastic fire-fighting effort has been a major factor in reducing the levels of smoke and impact on people living in the Latrobe Valley, and in particular Morwell.

While the CFA lists the fire status as controlled, I must stress that the fire is not yet completely out. In this fire situation, controlled can be best described as not having active fire in the mine. Despite this, a number of hot spots still remain active and continue to be monitored and addressed. However, I am pleased to say that we are over the worst. These hot spots will be extinguished by the use of specialist equipment, with fire-fighters remaining on site to continue to work with GDF SUEZ personnel and our contractors to completely extinguish the fire over the next week or so.

This fire has been very complex with many agencies putting countless resources behind the fire-fighting effort, ensuring that we combat the fire and reduce the level of smoke and impact. I would like to thank all of the agencies, departments and individuals who worked not only on the fire itself but have assisted in dealing with the challenges facing our Morwell and the broader Latrobe Valley communities.

GDF SUEZ Australian Energy welcomes the Victorian Government's announcement of an inquiry into various aspects of the fire and we will co-operate fully with the inquiry process.

● Where can I get more information?

Community Information and Recovery centre

The Community Information and Recovery centre located at, 22 Hazelwood Road Morwell, and is open to the community between the hours of 9am – 6pm. Representatives from various agencies including CFA, DHS, Ambulance Victoria and WorkCover can assist attendees with support and information.

Community Health Checks

A Community Health Assessment Centre is located at the Ambulance Victoria Gippsland Regional Office, 2 Saskia Way Morwell, next to the Mid-Valley Shopping Centre, 8.00am-8.00pm. Two nurses and two paramedics can offer basic health assessments, such as blood pressure, heart rate, temperature and basic respiratory checks such as chest sounds and respiratory rate.

Health concerns

Anyone with concerns about their health should seek medical advice or call Nurse on Call 24 hours a day, seven days a week **1300 606 024**.

Further information about smoke and health can be viewed at **www.health.vic.gov.au** or by calling **1300 253 942**.

Respite

A respite centre has been established at **Moe Town Hall, Albert Street Moe**, and is open to the community between the hours of 9am – 6pm.

Air quality

Air quality is being monitored by Environment Protection Authority (EPA), emergency services and Hazmat technicians. You can stay aware of the changing conditions via the EPA Website **www.epa.vic.gov.au** or by calling **1300 372 842**.

CFA mine fire updates

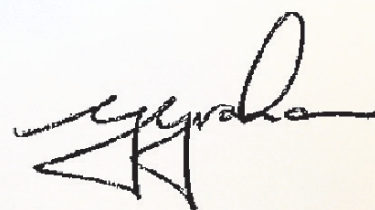
Up to date information on the mine fire can be viewed at **www.cfa.vic.gov.au** or by calling the Victorian Bushfire Information line on **1800 240 667**.

Latrobe City Council

A resident information campaign is being conducted by Latrobe City Council. Further information can be viewed at **www.latrobe.vic.gov.au** or by calling **1300 367 700**.

GDF SUEZ Hazelwood will continue to work closely with these agencies in fighting this fire.

Hazelwood and the entire GDF SUEZ Australian Energy business remain committed to working with representatives of Morwell and surrounding communities as the fire recovery process gets under way.



George Graham
Asset Manager
GDF SUEZ Hazelwood



Morwell Mine Fire

Thank You!

The entire Morwell mine fire was declared 'safe' last Tuesday following 45 days of intensive firefighting, bringing to an end one of the most challenging incidents we have experienced in GDF SUEZ Hazelwood's 50 years of operation.

For the many men and women involved in this incident, for the Morwell and surrounding communities, the announcement by the Fire Services Commissioner had been a long time coming, and was most welcomed.

On behalf of the entire GDF SUEZ Australian Energy business I wish to record our heartiest congratulations and deepest appreciation of all those who contributed to this most demanding of mine fires. Thank you one and all.

We know only too well that the smoke from this fire has had an enormous impact on the Morwell and surrounding communities. As a significant member of this community – with many of our employees and contractors living locally – GDF SUEZ Hazelwood understands the inconvenience and concern the fire has caused. We sincerely appreciate the community's patience while the essential fire suppression activity proceeded and we are now working with local representatives to determine how we can best contribute to recovery and revival programs.

From the time the fire spread into the mine on the afternoon of 9 February from what is believed to have been a deliberately lit bushfire, the response from Hazelwood personnel, contractors, the CFA, MFB and a multitude of other local and state government agencies has been nothing short of magnificent. All involved in the incident - from our personnel, our contractors, not for profit volunteer groups including the Red Cross, SES and St Johns Ambulance and firefighting agencies from across the country - have done an outstanding job to protect the mine, bringing the fire under control and making the mine again safe.

I would like to thank all of the contractors, agencies and individuals who worked not only on the fire itself but have assisted in dealing with the challenges facing our Morwell and Latrobe Valley communities.

The business community of Morwell and surrounds have come to our aid, being more than willing to loan or source items required or provide additional labour. The quick turnaround of requests ensured that we could get on with the job of fire suppression and extinguishing the fire.

From day one we knew that extinguishing this fire was going to be a tough slog and the resilience of our people throughout this

incident shone through. I am proud to say that the protection of our people, plant and operations remained our prime focus along with reducing the environmental impacts on the community of southern Morwell by reducing the levels of smoke from the northern batters.

In total more than 20 000 CFA shifts were completed during the fire fight. Combined with our employees and contractors who worked a rotating 12 hour shift roster, there was a total of more than 300 000 man hours worked across the 45 days. The fact that the firefighting operation was completed, often in extremely trying conditions, with no serious safety incidents is of great credit to everyone involved.

Our Hazelwood operations personnel are also to be applauded for their efforts in maintaining coal winning and power generation operations throughout this difficult period. Apart from the first 24 hours when we lost power to the mine and therefore needed to reduce generation, Hazelwood has operated at its usual reliable level.

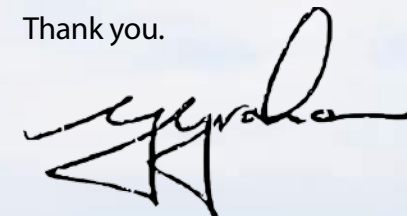
As we move into the final phase of this enormous firefighting operation, it is clear that there will be lessons to be learned for everyone involved. GDF SUEZ Australian Energy welcomes and will participate and co-operate fully with the independent inquiry to be headed by the Honourable Justice Bernard Teague.

For now though, as this fire incident draws to a close, we are focusing on recovering from the events of the past seven weeks.

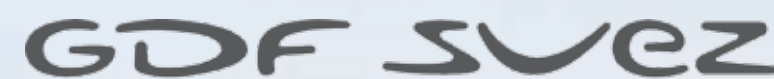
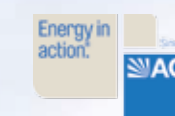
It is also a time to reflect and acknowledge the wonderful support we have received from the broad range of organisations and individuals, who are represented on this page. There are others who don't have links with formal organisations and we acknowledge their contribution too.

This has been a magnificent team effort.

Thank you.



George Graham
Asset Manager
GDF SUEZ Hazelwood

- Victoria Police • CFA Health Services • Fire Services Commissioner • Ambulance Victoria • Xylem Water Solutions • Holicom • Coates Hire • Kempe Valves and Fittings
- Penair Water Solutions • The BF Group • Weir Minerals • Flowsevre • Stratquip • Able On Site Services • GEM Industrial Services • P&D Rigging • Boom Sheerin
- Stephenson Transport • Logicams • Avis • LRH • Central Gippsland Health Service • Chemist Warehouse Morwell • Officeworks Traralgon • Domain • S & T Electro Air
- Transpacific • Veolia Environmental Services • Logo Express • Flemings Tree Service • Sims Metal • Electel • Nilsen • Latrobe Valley Enterprises • Boom Logistics
- Accurate Group • Belfinger Berger • Beveridge Williams • Conway Earthmoving • Geohart • Gippsland Grounds Maintenance • Glenn Stiles • Hitachi • JR Auto Electrics
- MAW Civil • Michael Hansch Contracting • Norm equipment • On Site Hearing • Primech • Sherritt Transport • Skilled • SP Ausnet • Trafalgar Auto Electrical • William Adams
- Yendle • Department of Health • VicRoads • EPA • Monacellers • Warragul Ezicool Ice Supplies • WBM Consultants • Transfield • GDF SUEZ Australian Energy Mitsui Loy Yang B
- William Adams • Victorian Marine Services • AWM • Crawford Marine • Gippsland Printers • Turnbulls Hire Drive • Workhire • Workforce • Steps Australia Recruitment
- Mairin OHS&E • Detector Maintenance Services • Monash Clinic • GHD • Boolarra Koffee Kart • Churchill Lions Club • Parks Victoria • Densley • Able Engineering • Maffra Poly Pipes
- O & M Electrical • Department Education and Early Childhood Development • Department Human Services • Department State Development Business and Innovation
- Victorian Council of Churches • Latrobe City Council • Out of Dough • Coles George Street Morwell • Aldi Morwell • PFD Foods • Burnsey's Meat • 503 on Princes
- Always Welcome Motel • Coal Valley Motor Inn • Farnham Court Motel • Mid Valley Motel • Morwell Motel • Morwell Parkside Motel • Federation University
- Best Western Governor Gipps • Bridges on Argyle • City Gardens Motel • Comfort Inn • Montford Manor • Motel Traralgon • Park Lane Holiday Park • Quality Inn
- Strezlecki Motor Inn • Traralgon Serviced Apartments • Village Caravan Park • Broadbents Motel • Midtown Inn • Best Western Aspen Motor Inn • Nando's • Café Evviva
- Café Aura • Woolworths • Glutopia • Traralgon Thai • Café Mint • Sabroso Tappas and Grill • Limons Karvery Kafe • Aygee Gippsland • CC's Eatery • Traralgon Lion City
- McDonalds • Noodle Paradise • HV Indian Restaurant • La Porchetta • Dominos Pizza • Charcoal Chicken • Café 2 U • Cold Rock Ice cream • Oriental Jade

The fire facts and figures:

- **123.8** million litres of water was used per day and recirculated by ground crews and aircraft to fight the fire. That is around **86 000** litres per minute.
- More than **1000** carbon monoxide tests on emergency services and our people were done each day of the fire.
- **189** Hazelwood personnel, with support from our contractors and Loy Yang B.
- More than **7000** individual full-time and volunteer fire-fighters – with many of these returning several times to work a total of some **20 000** shifts.
- Fire-fighting agencies from six states and territories – Victoria, NSW, Queensland, South Australia, Tasmania and the ACT.
- At the height of the incident some **65** fighting appliances, including telebooms, pumper tanks, compressed air foam systems, cranes and installation monitors were utilised.
- **17** Fire-bombing aircraft from the CFA and DEPI fleet including long line helicopters and S61 Sikorsky helicopters from Coulson Group in Vancouver Canada were integral in accessing restricted areas of the fire where other appliances can't successfully access. These aircraft dropped an average of **245 000** litres of water per day.
- Over **300** accommodation bookings each day in Morwell, Traralgon, Moe and Sale for staff from many different agencies working on the mine fire and its effects.

That was just the front-line resources, with a small army of personnel providing a myriad of support services, including the preparation and delivery of an average of **1500** meals per day.

The support and resources provided by other local industry including Energy Australia, Yallourn and AGL Loy Yang A during this firefight has been very much appreciated.



HAZELWOOD 1964 2014

