

To: Tranelgen ICC

ATT: operations

cc: Steven Wallis

Fax 51 76 56 98

Hand written incident plan for Day shift  
please excuse writing an spelling!!

Any Problems please call

Poss Mal

10 pages

Incident Action Plan for <sup>Ross Male</sup> Division Com  
Night  
Day shift 10/2/14

Mine Division - Hazelwood mine

Current situation

have uncontrolled fire on the North Batter of mine  
3 levels Approx 2 km in length.

have uncontrolled fire on the East Batter of  
Mine Approx 1 km in length.

Both these Batters are older unused sections of  
Mine.

Uncontrolled fire on the floor of the mine  
Approx 500m x 500m

Conveyors and mine infrastructure of the  
West Batters are not affected

Work is being done to restore 66 kv Power  
to mine so that pumps can be reinstated  
So that water drenchers can protect these  
assets

Coal production has stopped to Power station  
Hazelwood Power station is shutting down at this  
moment Down to 2 units and will be  
off line at 0700 if coal production <sup>(P)</sup>  
cannot be started.

At the moment CFA Tankers are being used to provide asset protection to key assets within and around mine

66 kv Power poles on Northern side of mine, Northern Maxwell sub station

clean water Pump station + Dirty water

Pump station within mine

Work is being done to restore power to the mine. Dredge II is expected to be back in production in the next couple of hours.

Water has been lost to 2 water pipe lines work is being done to divert water to maintain pressure to mine infrastructure.

## Day shift Objectives

Continue to provide Asset protection to key infrastructure in and around mine to protect working Batters of mine and plant to continue Coal supply

Protection of 66 kv lines North side of mine

Protection of clean and dirty water Pump Stations

Protection of Morwell sub station

Protection of west side of mine from Driffield fire

Using ground monitors + crane monitors as well as tankers to start working on Coal fires on North and East Batters of mine

## North Sector

Concentrate on North Batter working from West end

utilizing Ground Monitors, Crane Monitors

Teleboom on hand standing areas near reticulated water.

1x CFA strike team to provide asset protection

on North perimeter Road for SP Ausnet

crews to restore Poles on 66 kv lines

Asset Protect Dirty Water Pump station

## Central Sector

Provide tanker strike team to asset

Protect clean water Pump station

and attack fire on mine floor with ground Monitors

## East Sector

East Batter using 1x CFA strike team and Water Bombing

Working from West end

assess hand standing for areas for Pumpers with deck monitors to work face near reticulated water

## West side perimeter

1 x tanker strike team to patrol

Prevent fire from Driffield entering mine

Water Bombing as necessary

- \* Utilize Scasby hose layer as required to supply monitors within mine
- \* Health monitoring and Hazmat detection team to monitor CO levels of personnel as required
- \* Pumper strike team to be utilized in mine and surrounds as required depending on hard standing areas and reticulated water.
- \* portable repeater x 2 to be set up either side of mine to assist with Radio Comms

## Resourcing

4 x CFA Tanker strike teams (4x4)

1 x teleboom

1 x Scarsby Hose layer

1 x Pumper strike team

CFA Health monitoring

Hazmat detection monitors (Remote)

2 x mobile radio Repeaters (have 1 on site now)

# Comms plan

Tooralgon ICC  
channel - 191  
5177 3211

- Mine Division - O/o Lockwood

Morwell Mine  
fire ground channel - 219

Yallourn mine

North Sector

Central Sector

East Sector

West Sector



# Safety Message's

- \* Do not drive over any Power Cables
- \* CO monitoring - crews to have access to CO monitoring and record levels of Exposure to Carbon Monoxide
- Total withdraw at 200 ppm
- \* ~~object~~ Objects on Batters beware of trees falling etc
- \* Have Hazelwood mine guides around mine Area listen to advise from Hazelwood' mine guides
- \* beware of moving conveyors around mine Area
- \* beware of working on edge of Batters Not to be within 2m of Batter edge
- \* beware of driving on coal face can be slippery with hidden holes and drains across tracks
- \* report any big cracks in Batter-s back to mine Control - any big cracks withdraw to safe area (8.)

Night shift Div Com 9/2/14

SSO Ross Mal 13595

\* Ross Mal

Emergency Commander

Hazelwood Mine

James Faithfull

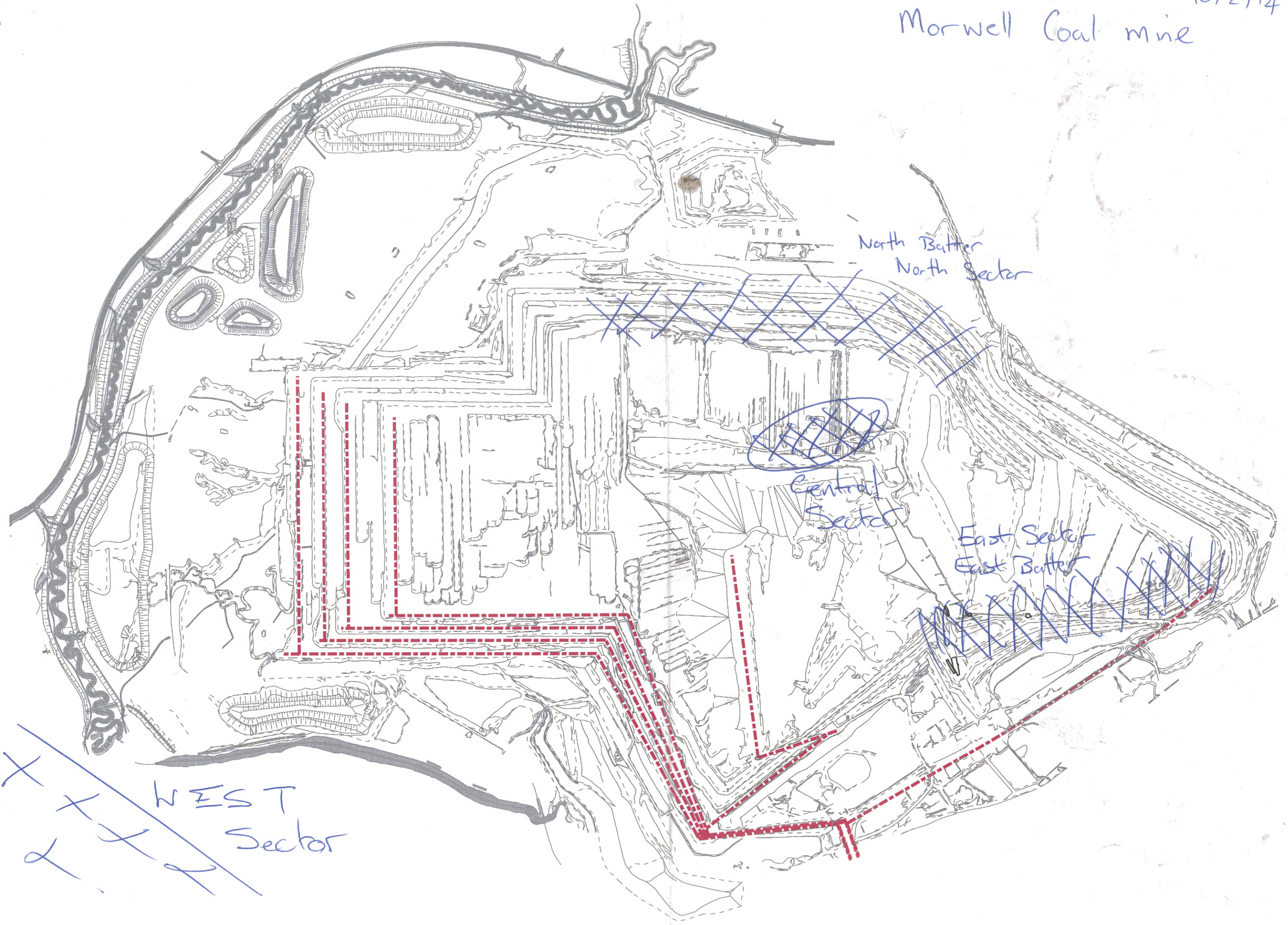
\* David Shattam

DAVID SHATTAM

9

10/2/14

# Morwell Coal mine



North Butter  
North Sector

Central  
Sector

East Sector  
East Butter

WEST  
Sector