



human.
services

Hazelwood Mine Fire 2014 Recovery Transition Plan

March 2014

Version 1.0

Published by the Victorian Government Department of Human Services Melbourne, Victoria

© Copyright State of Victoria 2014

This publication is copyright, no part may be reproduced by any process except in accordance with the provisions of the *Copyright Act 1968*.

Authorised by the State Government of Victoria, 50 Lonsdale Street, Melbourne

Document acceptance and release notice

This is version 1.0 of the Hazelwood Mine Fire Recovery Transition Plan for the Hazelwood Mine Fire 2014.

This is a managed document.

For identification of amendments each page contains a release number and a page number. Changes will only be issued as a complete replacement document.

Recipients should remove superseded versions from circulation. This document is authorised for release once all signatures have been obtained.

PREPARED by: Andrea Spiteri
Deputy Regional Recovery Manager

DATE: 7 March 2014

APPROVED by: Silvia Alberti
Regional Recovery Coordinator

DATE: 7 March 2014

1. Build Status:

Version	Date	Author	Reason
0.1	4/03/14	A. Spiteri	Draft plan for consultation
1.0	7/03/14	A. Spiteri	Plan for release

2. Distribution:

Copy No	Version	Issue Date	Issued To
1	1.0	7/3/14	SEMC, Gippsland EOC, RCC, Latrobe City Council

Accountability and review

The Hazelwood Mine Fire Recovery Committee is accountable for the Hazelwood Mine Fire 2014 Recovery Transition Plan for the Hazelwood Mine Fire 2014.

These arrangements shall remain in place to 31 March 2014, subject to review and agreement by the Hazelwood Mine Fire Recovery Committee.

Contents

1. About the plan
2. Background
3. Recovery Arrangements
 - 3.1 Purpose of this plan
 - 3.2 Goal and objectives for recovery
4. Disaster Assessment
5. Transition from response to recovery
6. Governance during recovery
 - 6.1 Recovery Committee
 - 6.2 Recovery Team
7. Communications arrangements
8. Reporting arrangements

Hazelwood Mine Fire 2014 Recovery Transition Plan

1. About the plan

This recovery transition plan has been developed for the Hazelwood Mine Fire Recovery Committee as the agreed plan for coordinating, implementing and supporting recovery transition activities following the Hazelwood Mine Fire. Until transition to recovery is formalised, this plan is linked to the Latrobe Valley Coal Mine HAZMAT/Fires Regional Strategic Risk and Consequence Plan and Latrobe Valley Coal Mine Hazmat/Fire 7 Day Action Plan via the Department of Human Services as the lead agency for the Relief/Recovery Regional Functional Unit.

While this plan relates to bushfire recovery plans that address a number of fire events in the Gippsland region this season, this document focuses specifically on the Hazelwood Mine Fire 2014 due to its uniqueness and significant impact on the community of Morwell and surrounding areas.

2. Background

On 9 February 2014 a fire suspected to have been deliberately lit made its way into the Hazelwood open cut coal mine. The fire generated significant smoke across the town of Morwell and surrounding areas. The Environment Protection Authority has been closely monitoring the particulate matter in the smoke and the Department of Health has been communicating with the public on potential health impacts.

On Friday 28 February 2014, a recommendation was issued for 'at risk' people who live or work in the South Morwell area to relocate away from near the open cut mine. Victoria's Chief Health Officer, Dr Rosemary Lester, identified 'at risk' individuals as being:

- pregnant women
- residents aged 65 and over
- children under school age (under 5 – including babies and infants)
- anyone with pre-existing heart or lung conditions.

Early recovery activities commenced alongside the delivery of relief services to the community, including the establishment of an Information and Recovery Centre in Morwell (as referenced in the Gippsland Regional Relief Plan).

3. Recovery Arrangements

This plan supports a multi-agency approach to recovery management, and acknowledges that recovery initiatives and operational activities for this emergency will be implemented by a range of agencies, organisations and departments. This plan is based on the National Principles for Disaster Recovery¹, which state that successful recovery relies on:

- understanding the **context**
- recognising **complexity**
- using **community-led** approaches
- ensuring **coordination** of all activities
- employing effective **communication**
- acknowledging and building **capacity**.

¹ Community and Disability Services Ministers' Advisory Council, *National Principles for Disaster Recovery*, Australian Government, 2009, at www.fahcsia.gov.au/sa/communities/pubs/Pages/Recovery.aspx

This plan has been prepared with reference to the *State Emergency Relief and Recovery Plan* and the *Regional Emergency Recovery Plan*², and should be read in conjunction with agency specific recovery plans for the Hazelwood Mine Fire 2014.

3.1 Purpose of this plan

The purpose of this document is to set out the arrangements for the planning for delivery of emergency recovery activities in response to the Hazelwood mine fire in the lead up to transition to recovery. These arrangements include:

- the goal and objectives of recovery for the Hazelwood mine fire
- a description of the Hazelwood mine fire and its impacts
- the governance, reporting and communications arrangements for the recovery environments across the six identified streams:
 - Social and community
 - Health (Public Health Impacts and Service System Response)
 - Economic
 - Built (Clean-up)
 - Natural/Agricultural
 - Communications and community engagement.

3.2 Goal and objectives for recovery

The goal for recovery is to increase the resilience of impacted communities so they are stronger and safer than before the Hazelwood mine fire.

The key objectives for the recovery phase from this mine fire are to:

- provide people, enterprises, local governments and other stakeholders affected by the mine fire with the information, support and services needed to pursue their recovery;
- plan and deliver recovery supports in a manner consistent with the *National Principles for Disaster Recovery*³ – using a coordinated approach, which is tailored to community contexts, recognises complexity, engages communities, communicates effectively, and acknowledges and builds community capacity;
- plan and deliver a coordinated range of recovery services, as required, across the environments of:
 - Social and community: to meet the key social needs for affected people, including temporary housing, psychosocial support, financial assistance services and communities
 - Health (Public Health Impacts and Service System Response): to address public health impacts and ongoing impacts to the health service system
 - Built: focussing on clean-up
 - Economic: addressing the requirements of business recovery
 - Natural/Agriculture: monitoring and restoring the natural environment and addressing impacts on agriculture
 - Communications and community engagement: addressing the community's information and engagement needs to empower them in their ongoing recovery

² For more details visit: www.dhs.vic.gov.au/about-the-department/plans,-programs-and-projects/plans-and-strategies/emergency-management/state-emergency-relief-and-recovery-plan

³ Community and Disability Services Ministers' Advisory Council, *National Principles for Disaster Recovery*, Australian Government, 2009, at www.fahcsia.gov.au/sa/communities/pubs/Pages/Recovery.aspx

- mitigate known and potential future risks resulting from the emergency.

4. Disaster assessment

Impact, needs, and loss and damage assessment processes have commenced and will continue through the Hazelwood Mine Fire Recovery Committee. Initially, impacts identified from the affected community are being collected through the implementation of the Community Engagement Strategy and from the following centres/sources:

- Community Respite Centre, Community Health Assessment Centre, DHS Assessment and Relocation Centres, Information and Recovery Centre, Latrobe City Council and other agencies involved in the Regional Emergency Management Joint Public Information Committee.
- Outreach to the Morwell community (residential and business premises).

5. Transition from response to recovery

The decisions relating to the timing of the formal transition from response to recovery coordination will be informed by a number of key considerations. First and foremost will be a determination by the Chief Health Officer that the smoke has reduced so that 'at risk' people can safely return to their homes. Other considerations will include:

- The nature of the hazard/threat and whether there is a risk of a recurring threat.
- The extent of impact on communities, as this may determine if a prolonged transition period needs to be implemented.
- The considerations for the extent of emergency relief required by affected communities.
- The considerations for the resources required to be stood up for effective recovery arrangements.

The Incident/Regional Controller (whichever is applicable), the Emergency Response Coordinator and Emergency Recovery Coordinator will determine the transition timing and handover requirements to fully establish the Recovery Coordination arrangements. In this prolonged campaign incident a transition period will be established to allow sufficient time for a streamlined and transparent process to inform and support the community, as well as the required agency briefing, resource planning and implementation of recovery services.

As part of the transition process, it is intended that the current Community Engagement Strategy and associated Community Advisory Group will transition into the recovery governance structure and planning under this recovery transition plan. A draft Hazelwood Mine Fire Recovery Plan is currently being developed.

As at 7 March 2014, the transition from response to recovery has not occurred. The following key steps have been identified as priority actions:

1. The Hazelwood Mine Fire Recovery Committee will meet on Tuesday 11 March 2014, and regularly thereafter. It is expected that the first version of the Hazelwood Mine Fire Recovery Plan will be endorsed at this meeting.
2. All recovery sub-committees within the governance structure will meet within 7 days following 11 March 2014 to identify priority recovery actions, assign responsibility for those actions and finalised appropriate sub-plans. These committees will complete comprehensive risk assessment and recovery activities tables to inform the development of the Hazelwood Mine Fire Recovery Plan.

6. Governance during recovery

The nominated Recovery Coordinator will coordinate recovery for the Hazelwood Mine Fire through the Hazelwood Mine Fire Recovery Committee.

6.1. Recovery Committee

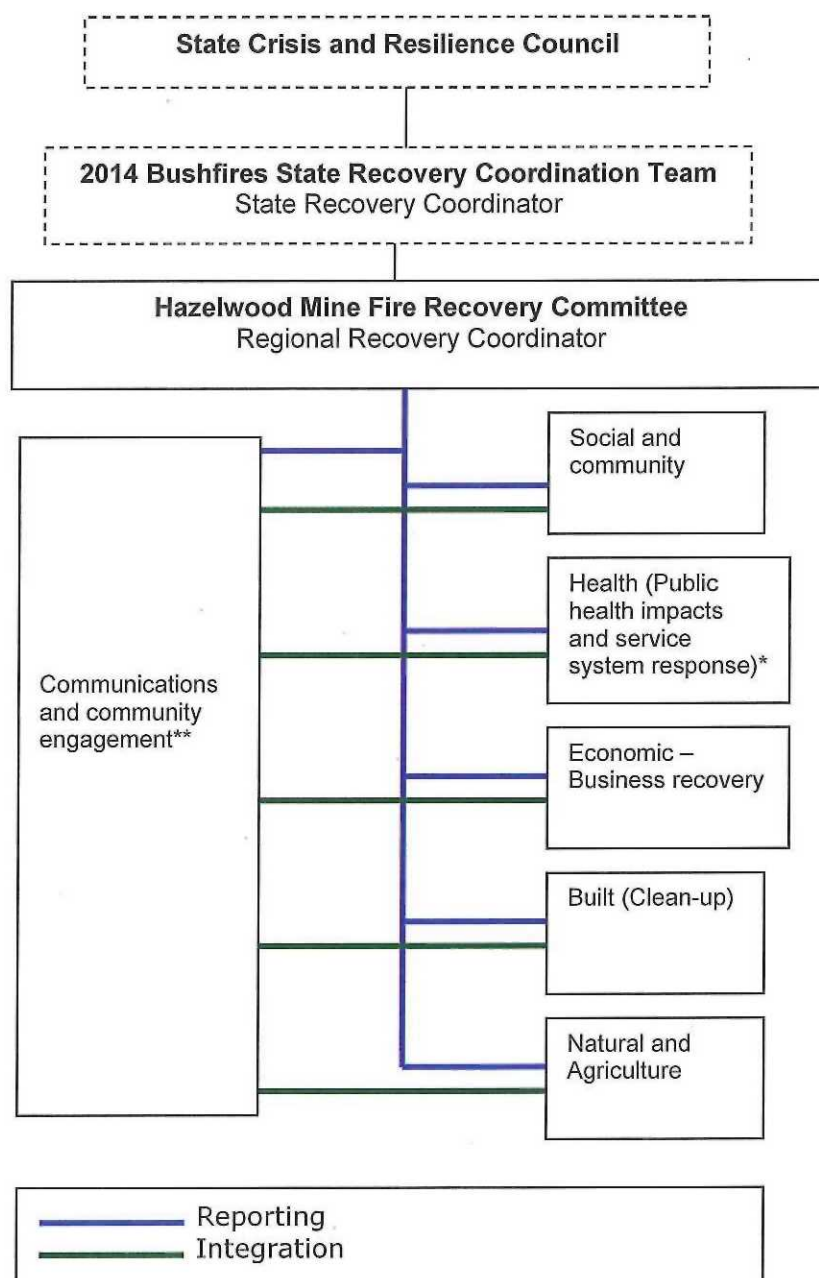
During an initial recovery transition planning meeting on 3 March 2014, it was agreed that the governance for recovery from the Hazelwood Mine Fire will be via the establishment of the Hazelwood Mine Fire Recovery Committee. This committee will initially be chaired by the Regional Recovery Coordinator and will include representatives of Latrobe City Council and Victorian Government departments.

A key responsibility of the Hazelwood Mine Fire Recovery Committee is to confirm the recovery streams determined in initial recovery transition planning, and to confirm the lead agencies to support municipal recovery planning for these streams.

The streams and lead agencies to develop appropriate plans and implement recovery activities are:

- Social and community recovery - Department of Human Services
- Health (Public Health Impacts and Service System Response) – Department of Health
- Built environment (Clean-up) – Local Government Victoria/Latrobe City Council
- Natural/Agriculture environment - Department of Environment and Primary Industries
- Economic recovery – Department of State Development, Business and Innovation
- Communications and community engagement – Department of Human Services/Latrobe City Council

Figure 1. Governance Structure for Recovery for the Hazelwood Mine Fire 2014



*The focus will be on public health impacts and the ongoing impacts to the health service system.

** Communications and community engagement strategies are to be integrated across all recovery environments.

6.2 Recovery Coordination Team

A recovery team is being established to support the recovery committee and undertake operational coordination of implementation of the recovery strategies, including communications and community engagement.

Initially this team will comprise of Department of Human Services and Latrobe City Council recovery staff, and will be in place as at Tuesday 11 March 2014, located in Morwell.

7. Communications arrangements

The current Community Engagement Strategy is being further developed in conjunction with the Community Engagement cell of the Regional Control Centre to streamline transition to recovery led communications and community engagement strategies.

8. Reporting arrangements

The Department of Human Services will remain responsible for reporting to the Regional Controller as lead for the relief/recovery functional unit until transition is formalised.

The Department of Human Services will undertake reporting to the 2014 State Recovery Coordination Team on behalf of the Hazelwood Mine Fire Recovery Committee.