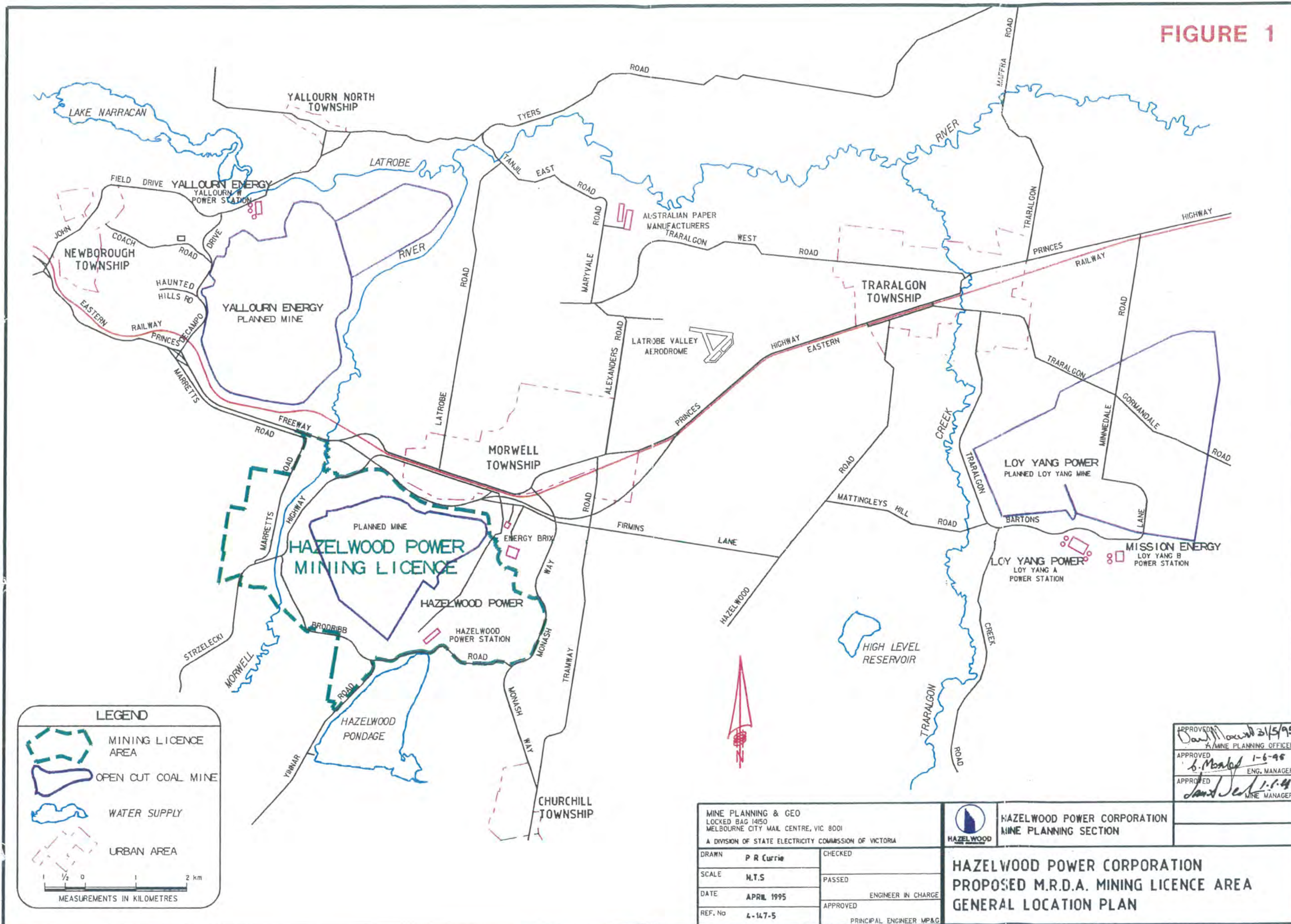


FIGURE 1



LEGEND

- MINING LICENCE AREA
- OPEN CUT COAL MINE
- WATER SUPPLY
- URBAN AREA

MEASUREMENTS IN KILOMETRES

Scale: 0 to 2 km, with 1/2 km increments.

MINE PLANNING & GEO LOCKED BAG 1450 MELBOURNE CITY MAIL CENTRE, VIC 8001 A DIVISION OF STATE ELECTRICITY COMMISSION OF VICTORIA	
DRAWN P R Currie	CHECKED
SCALE N.T.S.	PASSED
DATE APRIL 1995	ENGINEER IN CHARGE
REF. No L-147-5	APPROVED PRINCIPAL ENGINEER MP&G

HAZELWOOD POWER CORPORATION
MINE PLANNING SECTION

HAZELWOOD POWER CORPORATION
PROPOSED M.R.D.A. MINING LICENCE AREA
GENERAL LOCATION PLAN

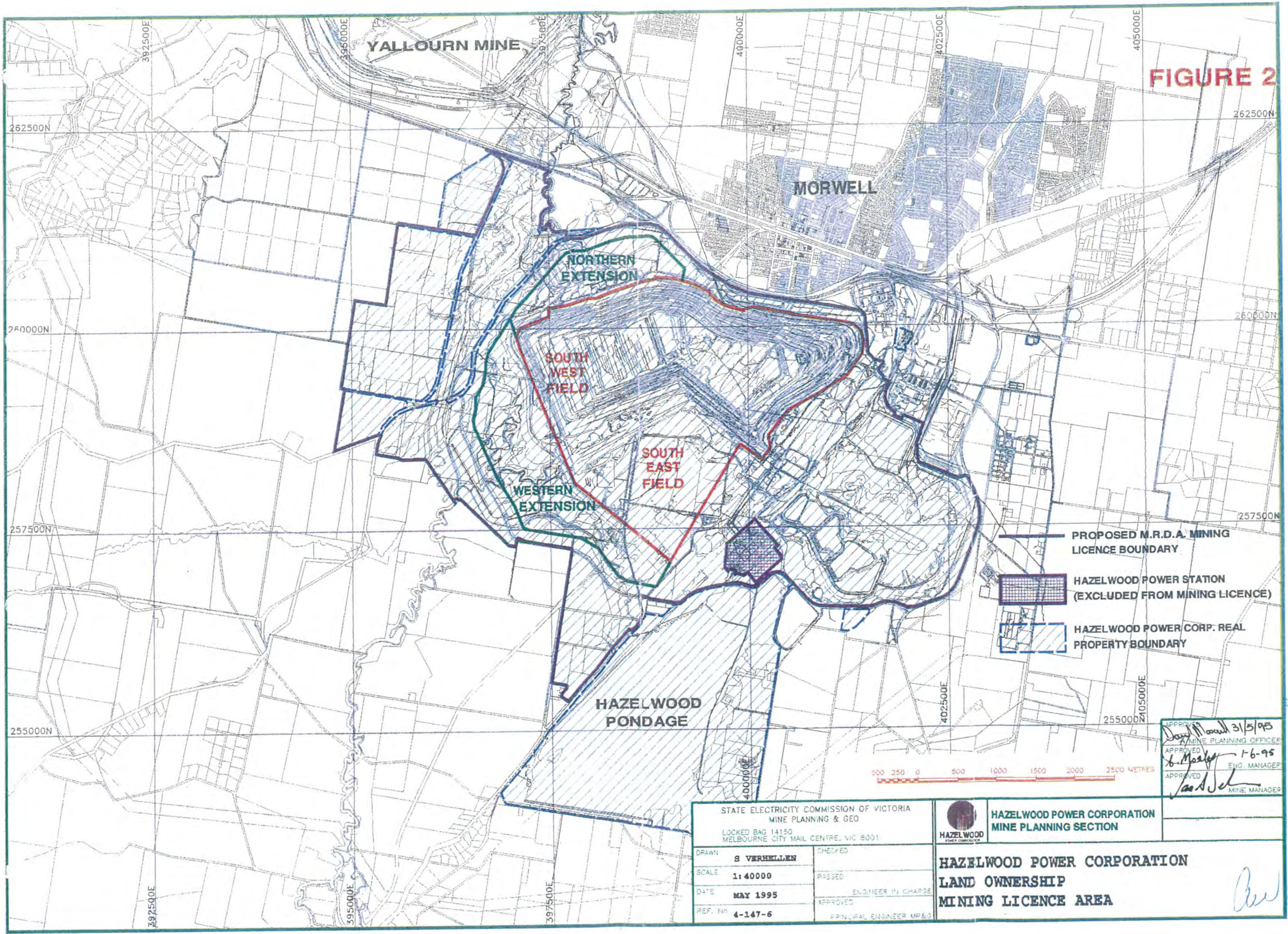
APPROVED: *David Mould* 21/5/95
MINE PLANNING OFFICER




APPROVED: *S. Mould* 1-6-95
ENG. MANAGER

APPROVED: *David Selby* 1-1-94
MINE MANAGER

au

FIGURE 2




-  PROPOSED M.R.D.A. MINING LICENCE BOUNDARY
-  HAZELWOOD POWER STATION (EXCLUDED FROM MINING LICENCE)
-  HAZELWOOD POWER CORP. REAL PROPERTY BOUNDARY

APPROVED *D. Verhellen* 31/5/95
 MINE PLANNING OFFICER
 APPROVED *S. Moyle* 1-6-95
 ENG. MANAGER
 APPROVED *Jack Selman*
 MINE MANAGER

STATE ELECTRICITY COMMISSION OF VICTORIA
 MINE PLANNING & GEO
 LOCKED BAG 14150
 MELBOURNE CITY MAIL CENTRE, VIC 3001

DRAWN	S VERHELLEN	CHECKED
SCALE	1:40000	PASSED
DATE	MAY 1995	ENGINEER IN CHARGE
REF. NO.	4-147-6	APPROVED
		PRINCIPAL ENGINEER MP&G

 HAZELWOOD POWER CORPORATION
 MINE PLANNING SECTION

**HAZELWOOD POWER CORPORATION
 LAND OWNERSHIP
 MINING LICENCE AREA**

Bev

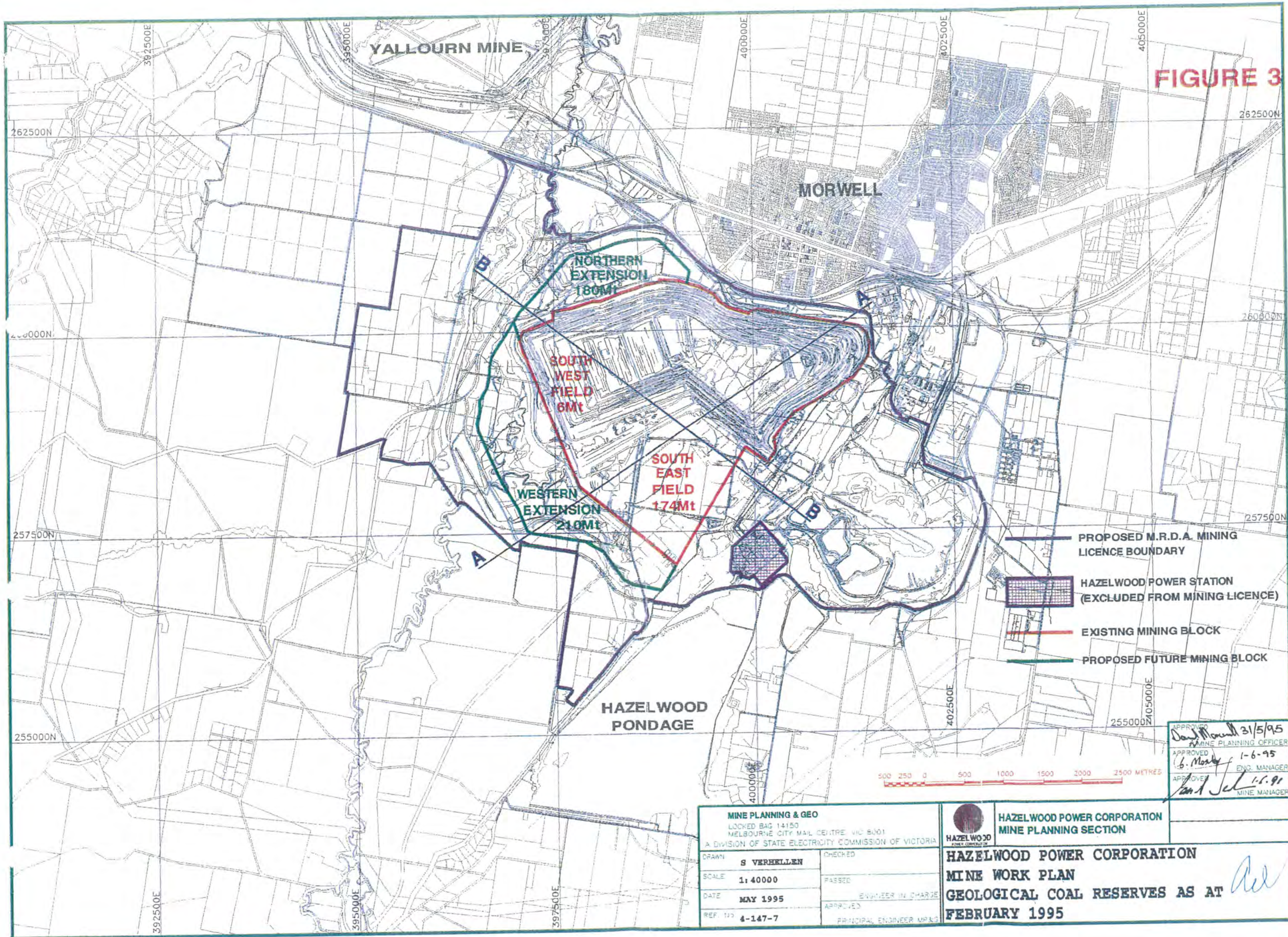


FIGURE 3

APPROVED
David Morwell 31/5/95
 MINE PLANNING OFFICER
 APPROVED
G. Mooney 1-6-95
 ENG. MANAGER
 APPROVED
Paul Sel 1-6-91
 MINE MANAGER

MINE PLANNING & GEO
 LOCKED BAG 14150
 MELBOURNE CITY MAIL CENTRE, VIC 3001
 A DIVISION OF STATE ELECTRICITY COMMISSION OF VICTORIA

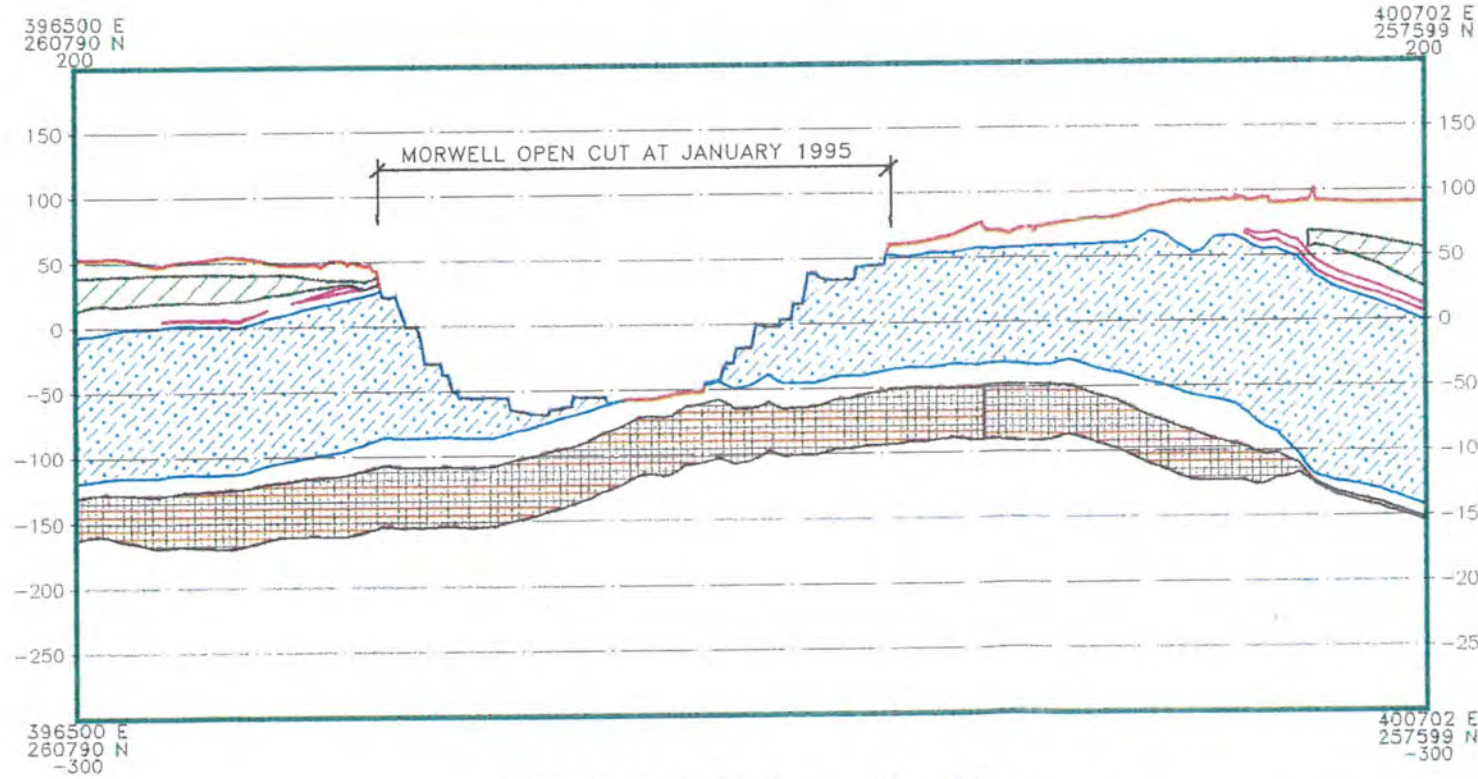
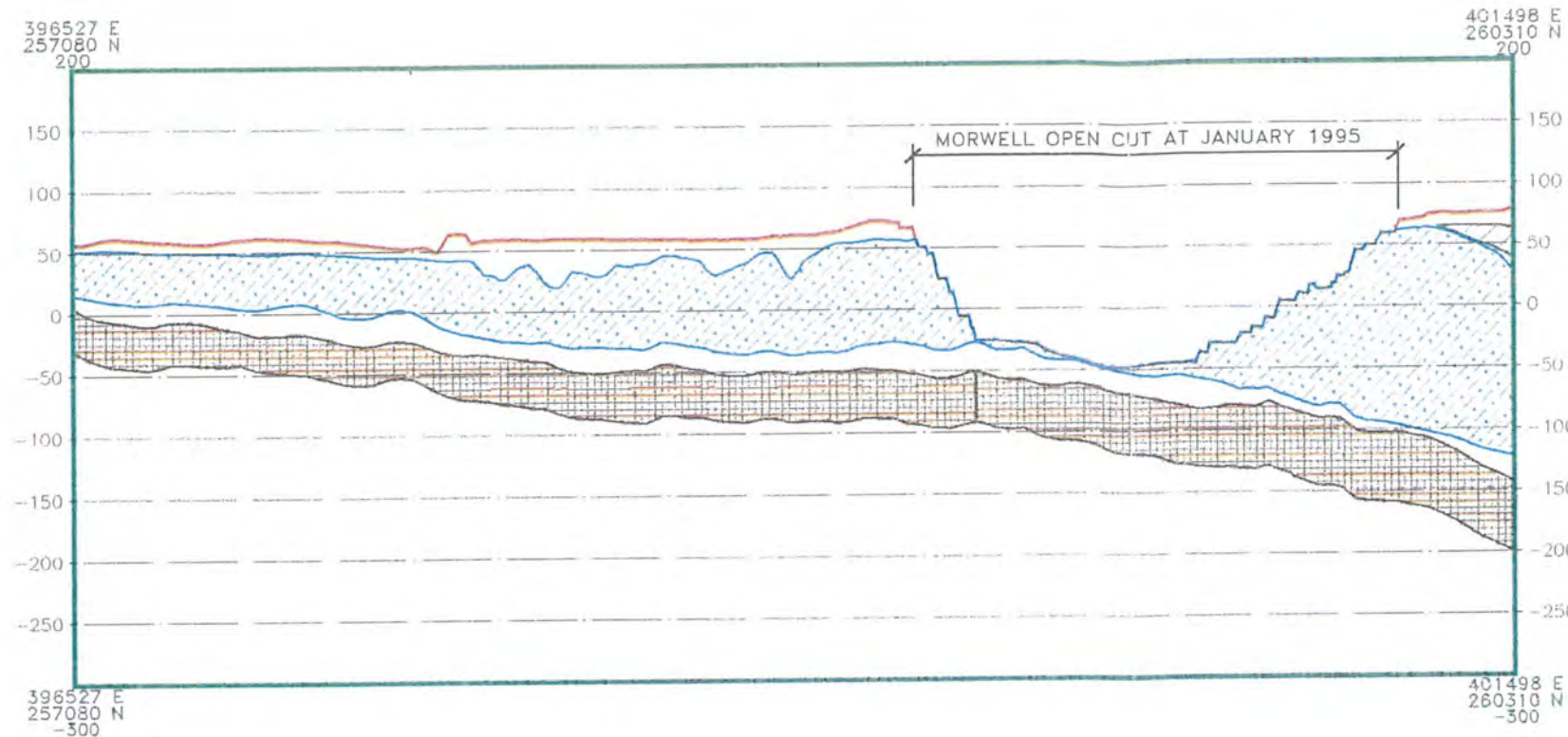
DRAWN	S VERHELLEN	CHECKED
SCALE	1:40000	PASSED
DATE	MAY 1995	ENGINEER IN CHARGE
REF. NO	4-147-7	APPROVED
		PRINCIPAL ENGINEER MP&G

HAZELWOOD POWER CORPORATION
MINE PLANNING SECTION




HAZELWOOD POWER CORPORATION
MINE WORK PLAN
GEOLOGICAL COAL RESERVES AS AT
FEBRUARY 1995

Paul

FIGURE 4




LEGEND

-  **YALLOURN SEAM**
-  **M10 SEAM**
-  **M1 SEAM**
-  **M2 SEAM**

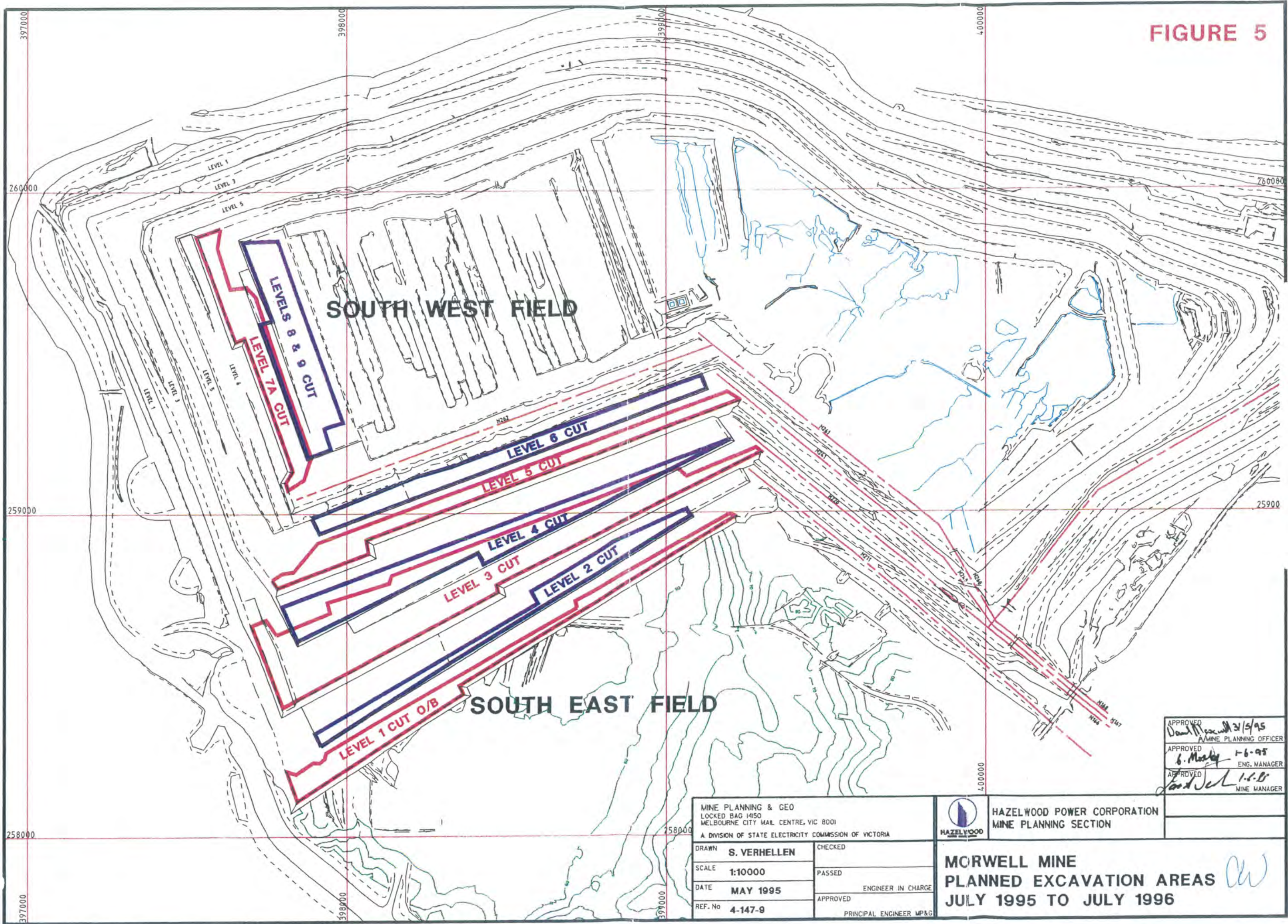
APPROVED: *[Signature]* 31/5/95
 MINE PLANNING OFFICER
 APPROVED: *[Signature]* 1-6-95
 ENGR. MANAGER
 APPROVED: *[Signature]* 1-6-95
 MINE MANAGER

MINE PLANNING & GEO LOCKED BAG 14150 MELBOURNE CITY MAIL CENTRE, VIC 3001 A DIVISION OF STATE ELECTRICITY COMMISSION OF VICTORIA	
DRAWN: S VERHELLEN SCALE: 5:1 VERT. EXAG. DATE: MAY 1995 REF. NO: 4-147-8	CHECKED: _____ PASSED: _____ ENGINEER IN CHARGE: _____ APPROVED: _____ PRINCIPAL ENGINEER MP&G

 HAZELWOOD POWER CORPORATION MINE PLANNING SECTION	APPROVED: _____ MINE MANAGER
	HAZELWOOD POWER CORPORATION MINE WORK PLAN GEOLOGICAL CROSS SECTIONS

[Handwritten initials]

FIGURE 5



APPROVED
David Macmillan 2/5/95
 MINE PLANNING OFFICER

APPROVED
G. Mealy 1-6-95
 ENG. MANAGER

APPROVED
David Sel 1-6-95
 MINE MANAGER

MINE PLANNING & GEO
 LOCKED BAG 1450
 MELBOURNE CITY MAIL CENTRE, VIC 8001
 A DIVISION OF STATE ELECTRICITY COMMISSION OF VICTORIA

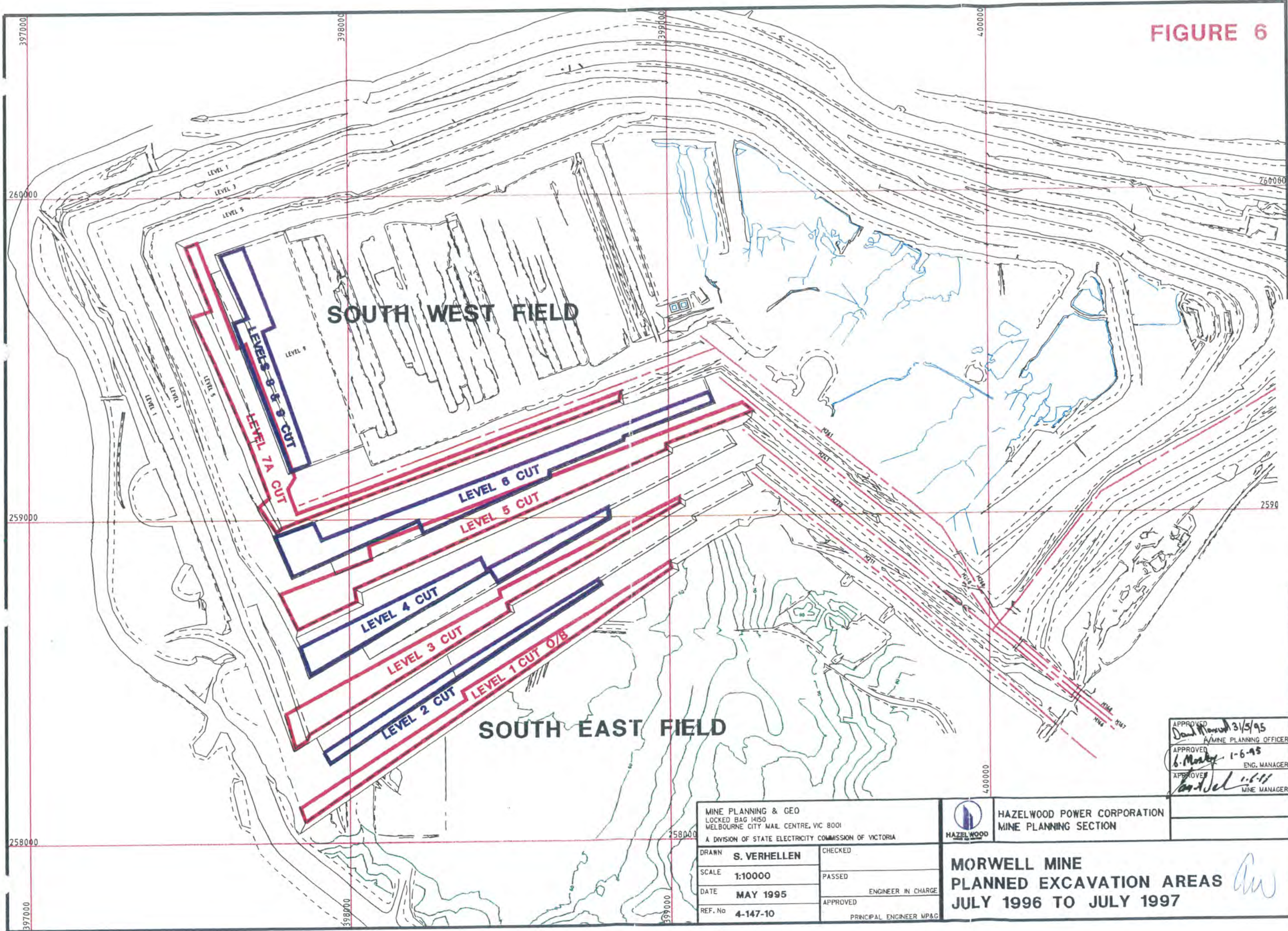
DRAWN **S. VERHELLEN** CHECKED _____
 SCALE **1:10000** PASSED _____
 DATE **MAY 1995** ENGINEER IN CHARGE _____
 REF. No **4-147-9** APPROVED _____
 PRINCIPAL ENGINEER MP&G

HAZELWOOD POWER CORPORATION
MINE PLANNING SECTION

MORWELL MINE
PLANNED EXCAVATION AREAS
JULY 1995 TO JULY 1996

aw

FIGURE 6



APPROVED
Don Marshall 3/5/95
 MINE PLANNING OFFICER

APPROVED
B. Mackay 1-6-95
 ENG. MANAGER

APPROVED
Bob Jel 1-6-95
 MINE MANAGER

MINE PLANNING & GEO
 LOCKED BAG 1450
 MELBOURNE CITY MAIL CENTRE, VIC 8001
 A DIVISION OF STATE ELECTRICITY COMMISSION OF VICTORIA

DRAWN **S. VERHELLEN** CHECKED
 SCALE **1:10000** PASSED
 DATE **MAY 1995** ENGINEER IN CHARGE
 REF. No **4-147-10** APPROVED
 PRINCIPAL ENGINEER MP&G

HAZELWOOD
 HAZELWOOD POWER CORPORATION
 MINE PLANNING SECTION

MORWELL MINE
PLANNED EXCAVATION AREAS
JULY 1996 TO JULY 1997

aw

FIGURE 7

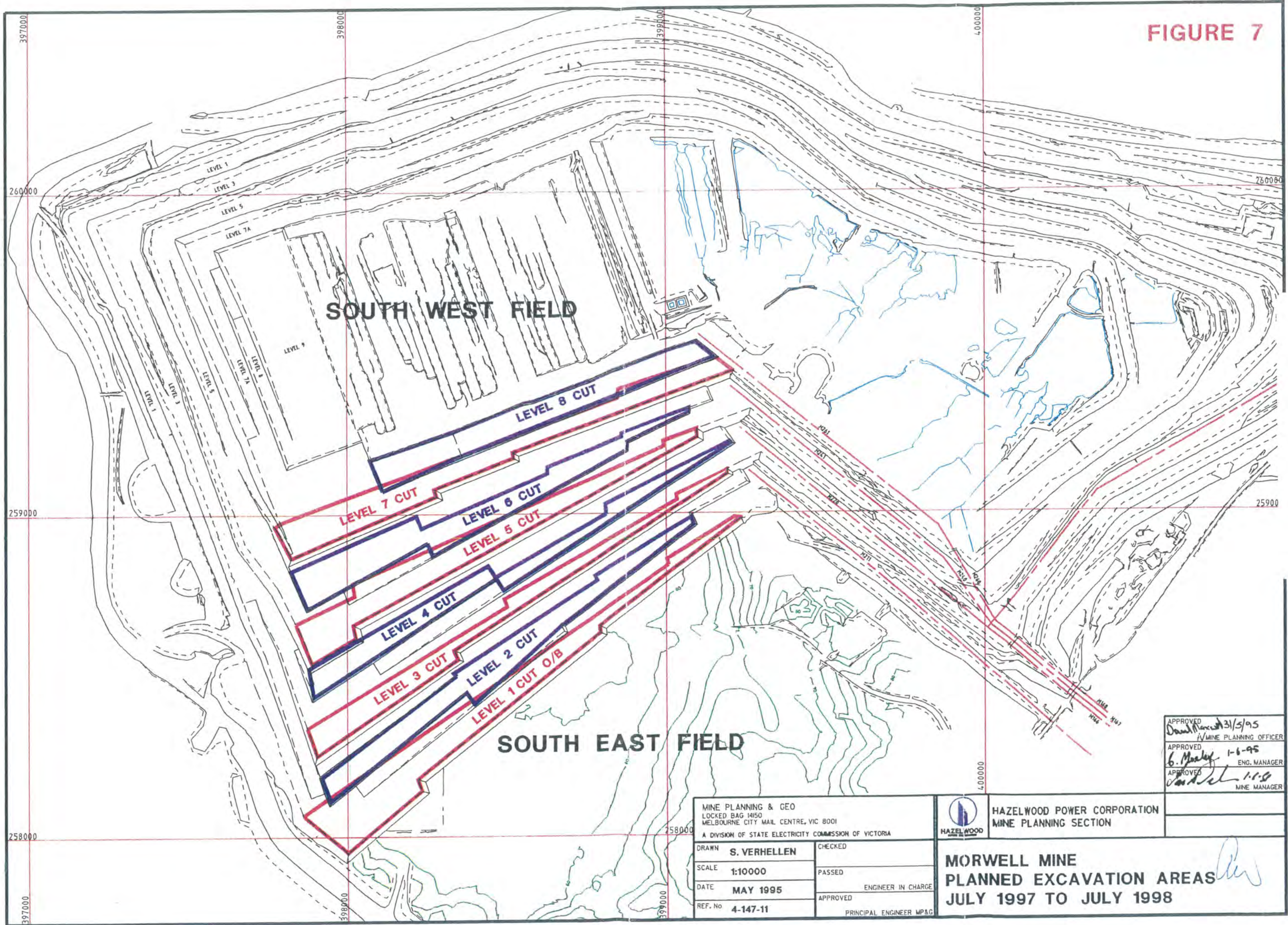
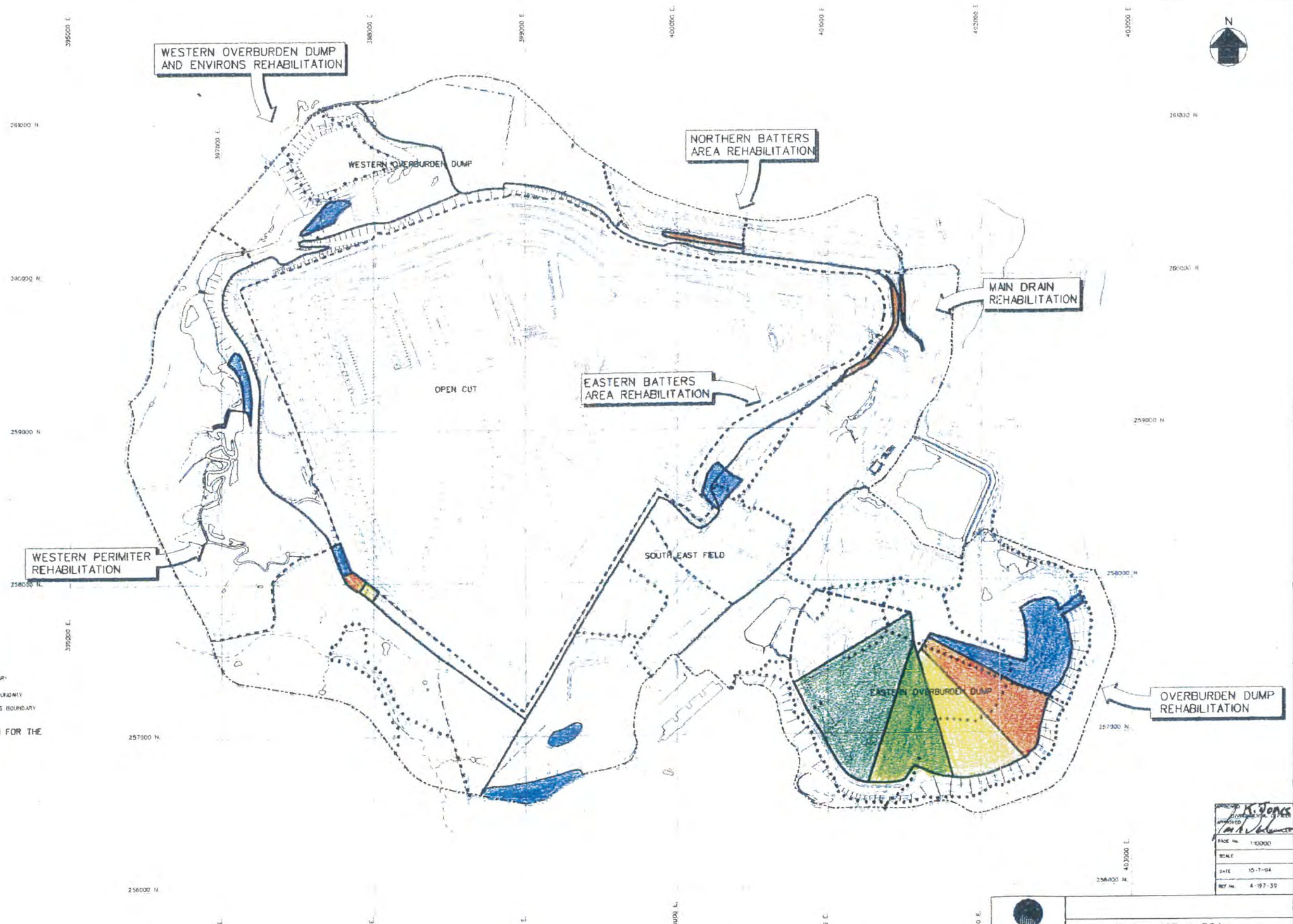


FIGURE 9



- - - - - SITE BOUNDARY
 - - - - - SECTOR BOUNDARY
 - - - - - SUB-SECTOR BOUNDARY
 AREA OF WORKS BOUNDARY

REHABILITATION WORK PLANNED FOR THE FOLLOWING FINANCIAL YEARS

	95 / 96
	96 / 97
	97 / 98
	98 / 99
	99 / 2000

K. Jones
 10/7/94
 SCALE: 1:10000
 DATE: 10-7-94
 REF No: 4-197-39

COPYRIGHT IN THIS DOCUMENT IS THE PROPERTY OF HAZELWOOD POWER CORPORATION AND DPS PTY LTD AND IT MUST NOT BE REPRODUCED, OR MADE AVAILABLE FOR USE BY ANY OTHER PARTY WITHOUT THE EXPRESS PERMISSION OF HAZELWOOD POWER CORPORATION AND DPS PTY LTD

NO.	DESCRIPTION	DATE	BY	CHECKED	DATE	BY

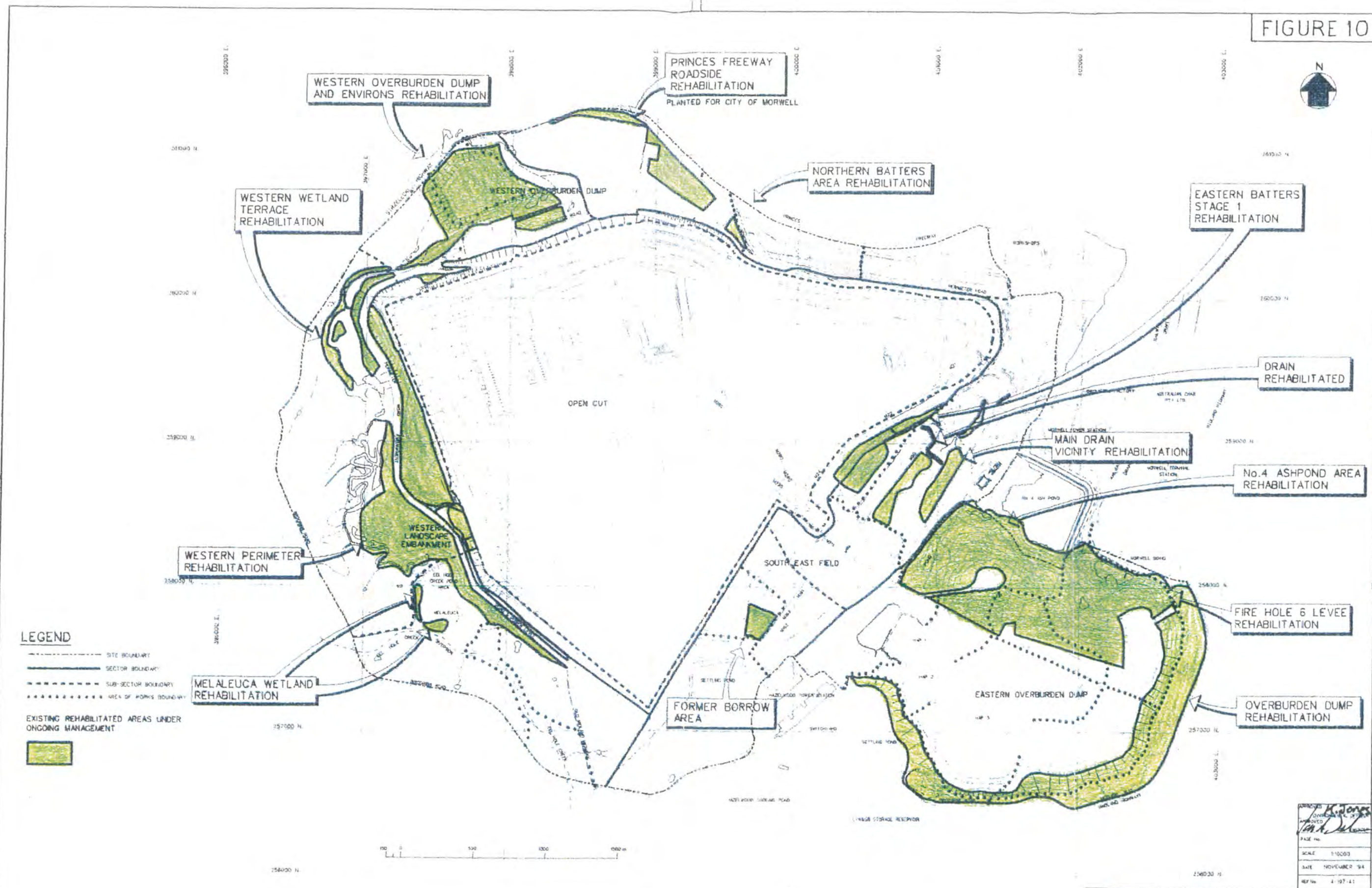
DPS PTY LTD
 CIVIL ENGINEERS & ENVIRONMENTAL DESIGNERS
 5th Floor
 8 Market Street
 Melbourne 3000
 Ph: (03) 629 3088
 Fax: (03) 629 3161

HAZELWOOD POWER CORPORATION
 MINE REHABILITATION MASTER PLAN
 5 YEAR PROGRAM 1996 - 2000

F45 / 197 / 38A

APPROVED:

FIGURE 10



LEGEND

- - - - - SITE BOUNDARY
- SECTOR BOUNDARY
- - - - - SUB-SECTOR BOUNDARY
- AREA OF WORKS BOUNDARY
- EXISTING REHABILITATED AREAS UNDER ONGOING MANAGEMENT
-



APPROVED
DATE
SCALE 1:10000
DATE NOVEMBER 94
REF No. 4-197-41

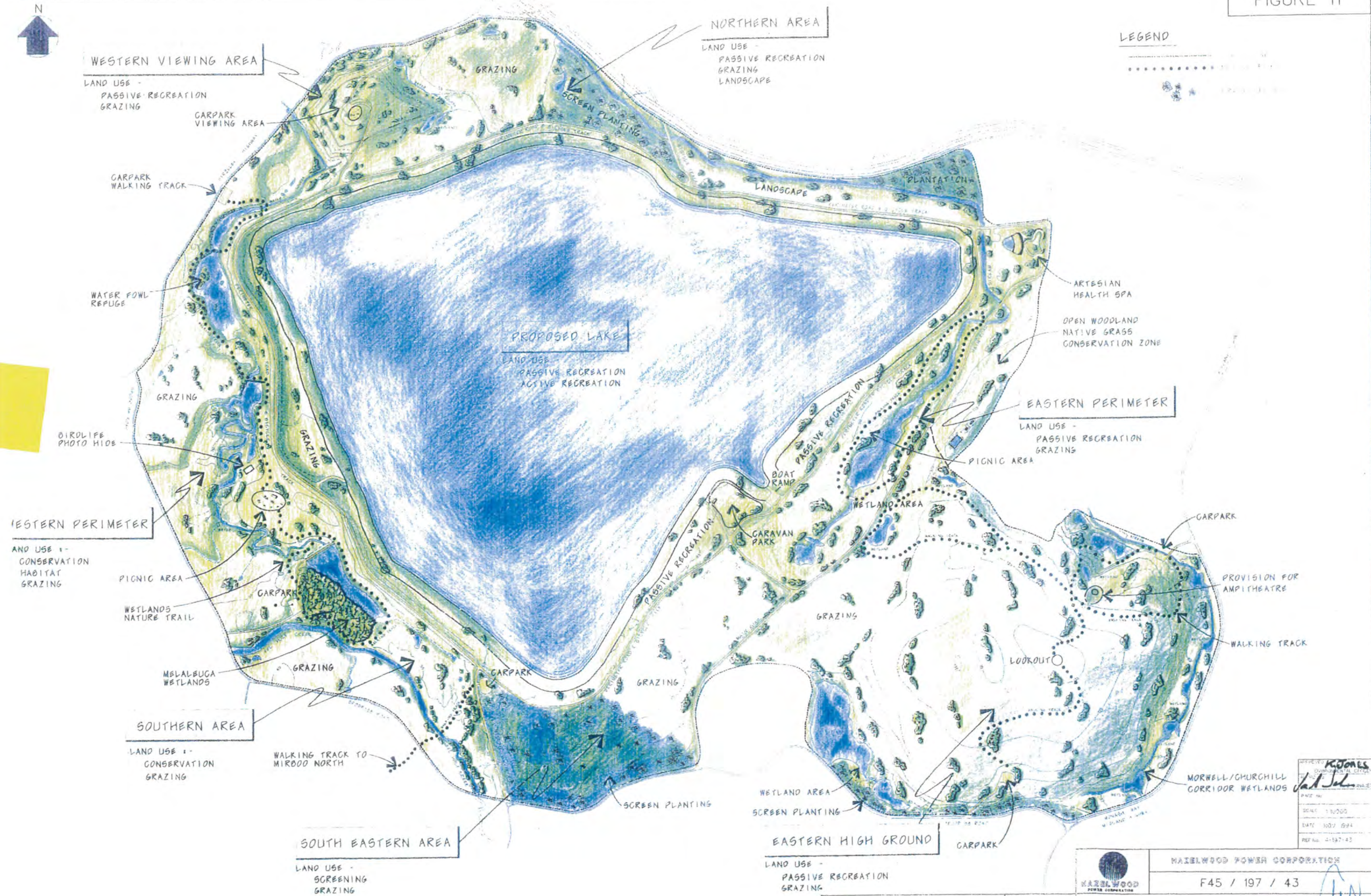
F47 / 197 / 41A

HAZELWOOD POWER CORPORATION
MINE REHABILITATION MASTER PLAN
EXISTING REHABILITATED AREAS AS AT JUNE 1995

COPYRIGHT IN THIS DOCUMENT IS THE PROPERTY OF HAZELWOOD POWER CORPORATION AND DPS PTY LTD AND IT MUST NOT BE REPRODUCED, OR MADE AVAILABLE FOR USE BY ANY OTHER PARTY WITHOUT THE EXPRESS PERMISSION OF HAZELWOOD POWER CORPORATION AND DPS PTY LTD		REFERENCE DRAWINGS	REVISIONS	DATE	BY	CHECKED	DATE	APPROVED	DATE

DPS PTY LTD
CIVIL ENGINEERS & ENVIRONMENTAL DESIGNERS
Sub. Plans
8 Market Street
Melbourne 3000
Ph: (03) 699 3088
Fax: (03) 699 3161

FIGURE 11



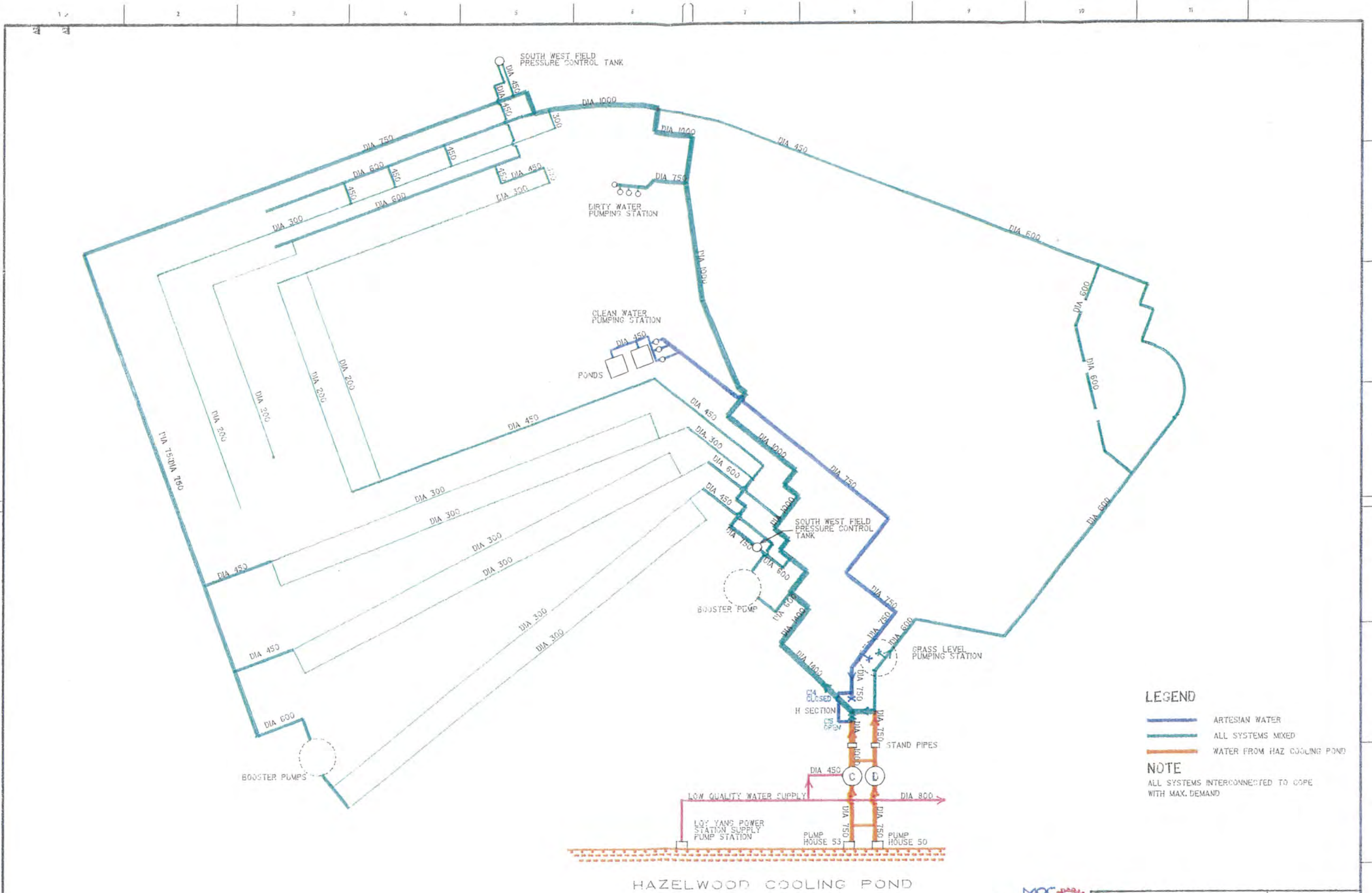
PROJECT	KOJALS
CLIENT	Hazelwood Power Corporation
SCALE	1:10,000
DATE	10/11/94
REF No.	2-187-43

HAZELWOOD POWER CORPORATION
F45 / 197 / 43

D P S PTY LTD
CIVIL ENGINEERS &
ENVIRONMENTAL DESIGNERS
5th Floor
8 Market Street
Melbourne 3000
Ph. (03) 629 3088
Fax. (03) 629 3161

HAZELWOOD POWER CORPORATION
MINE FINAL REHABILITATION
CONCEPT PLAN

COPYRIGHT IN THIS DOCUMENT IS THE PROPERTY OF HAZELWOOD POWER CORPORATION AND D P S PTY LTD AND IT MUST NOT BE REPRODUCED OR MADE AVAILABLE FOR USE BY ANY OTHER PARTY WITHOUT THE WRITTEN PERMISSION OF HAZELWOOD POWER CORPORATION AND D P S PTY LTD.



LEGEND

- ARTESIAN WATER
- ALL SYSTEMS MIXED
- WATER FROM HAZ COOLING POND

NOTE

ALL SYSTEMS INTERCONNECTED TO COPE WITH MAX. DEMAND

NO.	DESCRIPTION	DATE	BY	CHECKED

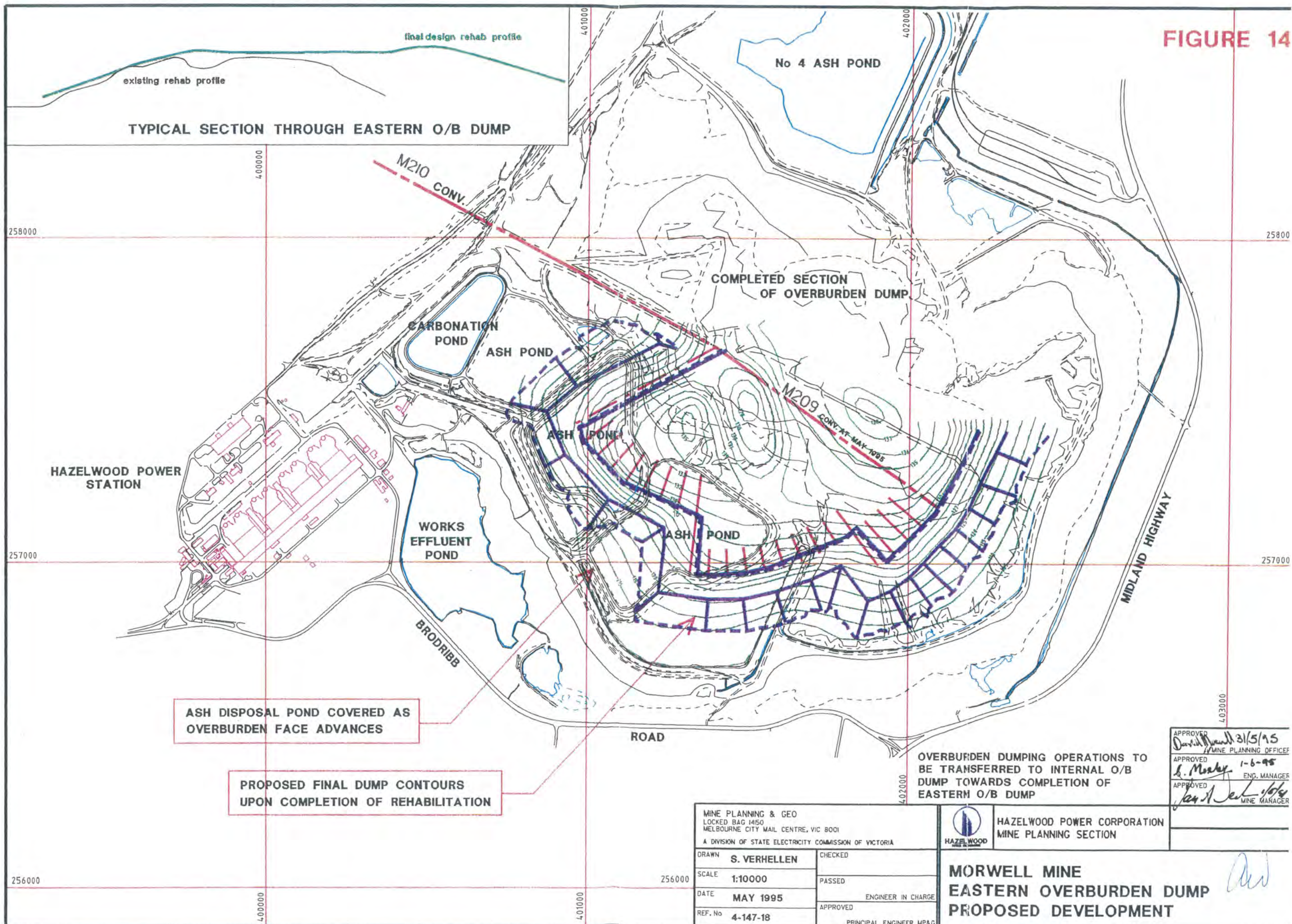
FIGURE 13c

HAZELWOOD POWER CORPORATION
HAZELWOOD FIRE SERVICE SECTION

MORWELL MINE
FIRE SERVICE NETWORK
SCHEMATIC DIAGRAM
ALL SYSTEMS INTERCONNECTED

DRAWN R. FREZUSO	DESIGNED D. MULLER
SCALE N.T.S.	PARTY J. P. ANDERSON OFFICER
DATE MAY 1995	DATE 1-6-95
REF. NO. MOD6003	APPROVED J. P. ANDERSON MINE MANAGER

FIGURE 14



ASH DISPOSAL POND COVERED AS OVERBURDEN FACE ADVANCES

PROPOSED FINAL DUMP CONTOURS UPON COMPLETION OF REHABILITATION

OVERBURDEN DUMPING OPERATIONS TO BE TRANSFERRED TO INTERNAL O/B DUMP TOWARDS COMPLETION OF EASTERN O/B DUMP

APPROVED
David Powell 31/5/95
 MINE PLANNING OFFICER

APPROVED
S. Mosley 1-6-95
 ENG. MANAGER

APPROVED
Jan A. Jett 1/6/95
 MINE MANAGER

MINE PLANNING & GEO LOCKED BAG 1450 MELBOURNE CITY MAIL CENTRE, VIC 8001 A DIVISION OF STATE ELECTRICITY COMMISSION OF VICTORIA		
DRAWN	S. VERHELLEN	CHECKED
SCALE	1:10000	PASSED
DATE	MAY 1995	ENGINEER IN CHARGE
REF. No	4-147-18	APPROVED
		PRINCIPAL ENGINEER MP&G

HAZELWOOD
 HAZELWOOD POWER CORPORATION
 MINE PLANNING SECTION

**MORWELL MINE
 EASTERN OVERBURDEN DUMP
 PROPOSED DEVELOPMENT**

AW

