



# State Strategic Support Team Brief:

## LATROBE VALLEY COAL MINE

**Version No. 5**

**Date: 18 February 2014**

**Prepared by: Joe Buffone, Deputy Chief Officer**





## Table of Contents

1. INTRODUCTION.....	3
Purpose.....	3
End State .....	3
Participants.....	4
2. INCIDENT STRATEGIC OVERVIEW .....	5
Situation Summary .....	5
Hazelwood Power Station .....	5
Yallourn Power Station.....	6
Weather Outlook .....	6
3. STATE CONTROL PRIORITIES.....	6
Principles covering the separate management of this fire.....	6
Incident Control Strategies .....	7
4. MANAGEMENT ARRANGEMENTS .....	7
Control Structure.....	7
Resourcing.....	9
IMT's .....	9
Regional Control.....	9
Specialist Resources.....	9
5. ACTIONS.....	10
Action Required.....	10
Agency/Person .....	10
Date.....	10
Completed.....	10
Health Commander /DoH/EPA/Regional Controller via EMJPIC.....	10
EPA.....	10
- Independent Hygienist Specialist engaged to validate systems at mine, working with the Incident and Regional Controller. Plan is being reworked and validated with a CFA medical officer. ....	10
EPA.....	11
6. COMMUNITY MESSAGING .....	12
7. MEETING FREQUENCY .....	13
8. ENDORSEMENT .....	13
<b>ATTACHMENT 1 – INCIDENT MAP</b>	





## 1. INTRODUCTION

### *Purpose*

The purpose of this document is to outline the approach being taken to provide strategic support to Regional Control currently managing the fires in the Latrobe Valley coal mines. This Brief supports and will be an appendix to the Strategic Risk & Consequence Plan for Latrobe Valley Mine Fire. A strategic support team has been established at the request of the State controller.

The Strategic Support Team will:

1. Ensure that State level agencies are engaged and actively supporting the response effort;
2. Provide a one-stop for strategic support to the Assistant Regional Controller for any mine/power incident;
3. Action resource requests in a timely manner;
4. Provide assistance and advice to work through any blockages;
5. Consider broader impacts and what if (?) scenarios of smoke impacts in the community, as well as associated potential health impacts;
6. Support a suppression strategy including:
  - a. Safety advisors providing health guidance for responders
  - b. Interstate/international expertise to support local personnel
  - c. Suppression of fire and how this will be achieved
  - d. Prevention of fire entering critical coal pits of infrastructure and how this will be achieved
  - e. Appropriate level for command staff
  - f. Appropriate SME on site
  - g. Connection to industry
  - h. Support the development of consistent messaging at Incident / Region and State levels as well as ESOs and ensure messaging to the community is consistent and relevant
7. Link into the State Control Centre – EMJPIC;
8. Ensure that resourcing is provided, where and as needed, as a priority;
9. Ensure that 4-day cycles of Incident Management Team (IMT) resources are planned for (full for day shift, core for night shift) jointly with MFB.

### *End State*

The ultimate goal for this team is to assist the Regional Control and IMT to; manage the fire effectively, achieve containment of the fire, minimise impact and ensure that focus is maintained as the States strategic priority, second to protecting life.





### Participants

Name	Role	Mobile	Email	Position
<b>Joe Buffone</b>	CFA Deputy Chief Officer	0400904866	<a href="mailto:j.buffone@cfa.vic.gov.au">j.buffone@cfa.vic.gov.au</a>	Lead
<b>Andrew Zammit</b>	MFB Assistant Chief Officer	0417582658	<a href="mailto:azammit@mfb.vic.gov.au">azammit@mfb.vic.gov.au</a>	Assistant Regional Controller
<b>David Youssef</b>	MFB Deputy Chief Officer	0438089082	<a href="mailto:dyousef@mfb.vic.gov.au">dyousef@mfb.vic.gov.au</a>	Agency Rep
<b>Ian Hunt</b>	AV Manager Emergency Management State Health	03 90905906	<a href="mailto:ian.hunt@ambulance.vic.gov.au">ian.hunt@ambulance.vic.gov.au</a>	Agency Rep
<b>John Matis</b>	DSDBI	0418506172	<a href="mailto:John.mitas@dssdbi.vic.gov.au">John.mitas@dssdbi.vic.gov.au</a>	Dept. Rep
<b>Julian Meagher</b>	Dept. of Health	0401142128	<a href="mailto:julian.meagher@health.vic.gov.au">julian.meagher@health.vic.gov.au</a>	Dept. Rep
<b>Vikki Lynch</b>	Dept. of Health	0407931336	<a href="mailto:vikki.lynch@health.vic.gov.au">vikki.lynch@health.vic.gov.au</a>	Dept. Rep
<b>Chris Webb</b>	EPA	0410573421	<a href="mailto:chris.webb@epa.vic.gov.au">chris.webb@epa.vic.gov.au</a>	Agency Rep
<b>Craig Shepherd</b>	VicPol	0400124690	<a href="mailto:craig.shepherd@police.vic.gov.au">craig.shepherd@police.vic.gov.au</a>	Agency Rep
<b>Jeff Halmarick</b>	VicPol	0429022141	<a href="mailto:Jeffrey.halmarick@police.vic.gov.au">Jeffrey.halmarick@police.vic.gov.au</a>	Agency Rep
<b>Jenny McKeagney</b>	DEECD	0402309634	<a href="mailto:Mckeagney.jennifer.m@edumail.vic.gov.au">Mckeagney.jennifer.m@edumail.vic.gov.au</a>	Agency Rep
<b>Liz Radcliffe</b>	EPA	0407835534	<a href="mailto:Elizabeth.radcliffe@epa.vic.gov.au">Elizabeth.radcliffe@epa.vic.gov.au</a>	Agency Rep





<b>Kylie White</b>	DSDBI	0419578399	<a href="mailto:Kylie.white@dsdbi.vic.gov.au">Kylie.white@dsdbi.vic.gov.au</a>	Agency Rep
<b>Geoff Peterson</b>	ED DEECD	0428384427	<a href="mailto:Peterson.geoffrey.g@edumail.vic.gov.au">Peterson.geoffrey.g@edumail.vic.gov.au</a>	Agency Rep
<b>Nikos Likouresis</b>	Work Safe	0401140710	<a href="mailto:Nikos_likouresis@worksafe.vic.gov.au">Nikos_likouresis@worksafe.vic.gov.au</a>	Agency Rep
<b>David Harris</b>	DSDBI	0400665570	<a href="mailto:David.harris@dsdbi.vic.gov.au">David.harris@dsdbi.vic.gov.au</a>	Agency Rep

## 2. INCIDENT STRATEGIC OVERVIEW

### *Situation Summary*

On Sunday 9 February, a large number of grass fires started around Morwell. As a result, fires impacted a range of infrastructure including the Hazelwood Power Station and Yallourn Power Station.

Current analysis suggests that the fire will be contained within the Hazelwood mine site and will not extend to the working face of the mine, with a longer term prediction of extinguishing the fire.

### **Hazelwood Power Station**

Hazelwood Power Station is currently burning along three levels of batter on the Northern, Eastern and Southern sides of the mine. These areas with active fire are in non-working sections of the mine however, there is infrastructure within these areas that is critical to mine operations. Wet lines have been put in place between the active fire area and the working sections of the mine to prevent the spread of the fire.

Contingency plans have been made for fall back lines in the event of increased fire behaviour or loss of control.

Reported damage:

- Some damage occurred to onsite power lines and pumping stations prior to 11/02/14.
- Power lines have been partially restored.
- Damage has also occurred to the conveyor to Energy Bricks.

Critical control factors:

- Low humidity and high winds, particularly anything from the North East, East or South East.
- Loss of infrastructure to provide power to onsite pumps.



## Yallourn Power Station

Fires continue to burn around the Yallourn Power Station but there are currently no fires in the Yallourn operational coal faces. *Energy Australia Yallourn* continues to operate at full capacity.

There are occasional fire flare-ups on the border of the coal mine operating areas. Resources are working to safely keep fire out of the operating areas.

## Weather Outlook (as advised verbally by BoM at SCC on 13/2/2014)

Currently experiencing moderate winds with a slight South Easterly. Nocturnal inversion will occur, which will hold smoke over the La Trobe Valley for the next 1-4 days. The wind will move to a slight South Westerly beginning Saturday and predominantly Sunday, which may move smoke from the mine into community areas. The wind is forecast to move back to a South Easterly later on Sunday.

## 3. STATE CONTROL PRIORITIES

The State Controller's 'Strategic Control Priorities' for the 2013/14 Bushfire period are being utilised to ensure planning is focused and strategic. The 'Strategic Control Priorities' for the 2013/14 Bushfire period are:

- Protection and preservation of life is paramount. This includes:
  - Safety of emergency services personnel ; and
  - Safety of community members, including vulnerable community members and visitors/tourists located within the incident area;
- Issuing of community information and community warnings detailing incident information that is timely, relevant and tailored to assist community members in making informed decisions about their personal safety
- Protection of critical infrastructure and community assets that support community resilience
- Protection of residential property as a place of primary residence
- Protection of assets supporting individual livelihoods and economic production that support individual and community financial sustainability
- Protection of environmental and conservation assets that considers the cultural, bio diverse, and social values of the environment.

## Principles covering the separate management of this fire (refer: State Operational Brief – overview for Bushfire major incidents 12-13 February 2014)

- A boundary of operations footprint is clearly identified covering the Hazelwood mine, Yallourn mine and adjoining infrastructure
- A separate IMT is established for the above footprint



- The balance of the Morwell – Hernes Oak fire outside the above footprint continues to be managed by the Traralgon IMT
- Strong management of the Regional Control function to ensure efficient use of resources and messaging (refer to management structure below)
- The Incident Controller (IC) for the above footprint reports to the Assistant Regional Controller Gippsland (Hazelwood)
- The Assistant Regional Controller will coordinate Regional Strategic Planning relating to the mine fires
- The Hazelwood Incident Control Centre is located at the Hazelwood Emergency Operations Centre
- The Hazelwood IMT is responsible for fire suppression within the operations footprint
- Suitable Emergency Management Team arrangements are established
- Coordinated community messaging is critically important
- Communication relating to the progress of suppression and smoke issues will be managed by the Hazelwood Mine IMT
- Communication involving potential impacts associated with interruption to power supplies, will be coordinated through the Regional Controller and/or the State Controller or referred to broader State arrangements, as appropriate.

### **Incident Control Strategies**

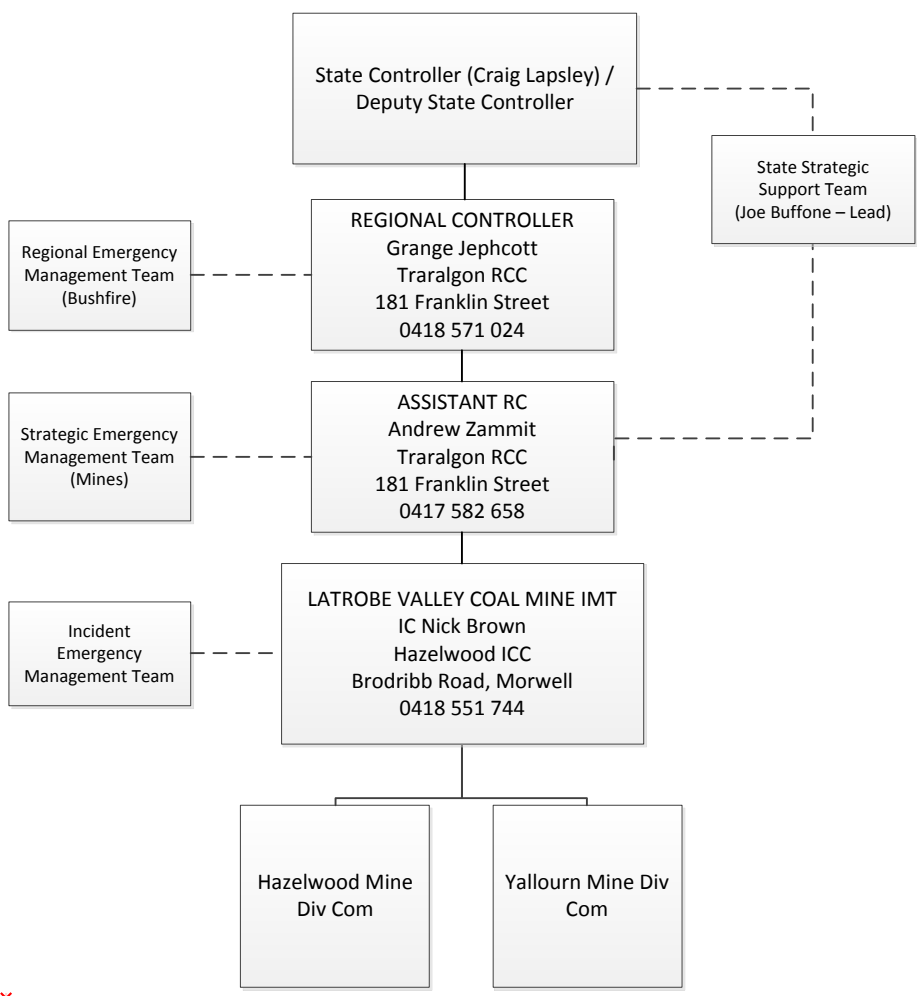
- Contain fire spread to minimise impacts on mine critical infrastructure and critical coals supplies
- Prevent fire from spreading to critical coal supplies
- Prevent perimeter fires from impacting on mine critical infrastructure and coal supplies
- Suppress/extinguish fire
- Monitor and advise community on smoke impacts.

## **4. MANAGEMENT ARRANGEMENTS**

### ***Control Structure***

Due to the specific issues relevant to fires in mine sites, an Assistant Regional Controller has been established to focus on the area of interest of the Latrobe Valley Coal Mines. A single Incident Controller is reporting directly to the Assistant Regional Controller. This Incident Controller is managing fires in two mining sites as two divisions (Hazelwood and Yallourn).

The control structure that has been established from State, Regional and Incident, is outlined below.



Comment [C]: Need to insert new structure







## ***Resourcing***

The Gippsland Region recognises that with a number of significant incidents occurring across the State, there is a limitation on the availability of resources for both response to the major fires and for readiness in the event of new fire starts.

The Assistant Regional Controller, in consultation with the Regional Controller and IMT, is developing a resourcing plan for the Latrobe Valley Coal Mine IMT, to ensure there is consistent and efficient use of resources. The current resourcing strategy involves developing a 16-day plan with 4-day rotations of IMT staffing levels.

The intent of the resourcing strategy is to maintain a steady number of State resources at the fire sites, provided partly from within the Region and partly from outside the Region where required. Substantial support has been prepared and provided by MFB personnel.

Resource requests will be submitted via the State Resource Request System and the State Strategic Support Team Lead in order to ensure that progress is monitored effectively and priority focus in consultation with MFB, is maintained.

## **IMTs**

Day shift requires a full IMT rotating on a 4-day cycle with 1-day travel at each end of the 4-day rotation.

Night shift requires a Core IMT rotating on a 4-day cycle with 1-day travel each end of the 4-day rotation. All IMTs to have key local personnel blended within IMTs.

## **Regional Control**

Assistant Regional Controller will continue to remain in place to focus on Latrobe Valley Mine Fires and provide a linkage back to the Regional Controller and strategies to broader fire surroundings. Assistant Regional Controllers will rotate on 4-day shifts.

## **Specialist Resources**

Specialist pumping equipment and monitors such as Aerial Pumpers, Tele booms, Heavy Pumpers and Ground Monitors have been sourced and provided to support the suppression/containment strategy. Atmospheric monitoring and CO monitoring equipment is in place and has been expanded in order to advise on community impacts.



## 5. ACTIONS

### Following meeting 14/2/2014

Item	Action Required	Agency/Person	Date	Completed
A	<p>Department of Health (DoH) and EPA implementing Bushfire Smoke Air Quality Guidelines for mine fire. Communications sheet being prepared and further work being done on air monitoring.</p> <p><b>Message that Bushfire and Mine smoke have same content but dispersion issues for mine are different.</b></p>	DoH & EPA	14/2/2014	In progress
B	Ensure consistent messaging to emergency responders, mine workers and the community.	Health Commander /DoH/EPA/Regional Controller via EMJPIC.	12/02/2014	Complete
C	Ambient Air monitoring in Morwell Community to provide assurance on air quality analysis. SME Paul Torre on site at Morwell and working with Assistant Regional Controller.	EPA	12/2/2014	Complete
D	WH&S Occupational Hygienist advice. (Robert Golic – AMCOSH)	<p>- Independent Hygienist Specialist engaged to validate systems at mine, working with the Incident and Regional Controller. Plan is being reworked and validated with a CFA medical officer.</p> <p>-Ambulance Victoria Health Commander</p>	<p>12/2/2014</p> <p>12/02/2014</p>	<p>Yes</p> <p>Complete</p>





		<p>assisting in health monitoring systems for responders and workers only at the mine)</p> <p><b>Sector health commander focused on health monitoring at the mine incident (Neil Aikers).</b></p> <p><b>Potentially engaging St Johns to take lead of monitoring of people.</b></p> <p>- WorkSafe has provided a contact for specialist hygiene advice as part of 'normal' WorkSafe advice. (Ian Grayson)</p>	<p>14/02/2014</p> <p>12/02/2014</p>	<p>In progress</p> <p>Complete</p>
E	CO monitoring within Morwell community by: expanding the CO boundary monitoring at the mine and providing dynamic monitoring by SME at critical times within community. This is weather dependent.	EPA	14/02/2014	Complete and ongoing
F	Energy and Mine Sector to be directly engaged at State and Incident level.	Joe Buffone has engaged DSDBI energy and mines divisions - now participating as part of SSST	12/02/2014	Complete
G	CFA and MFB to work together to provide IMT and specialist resources to support response/suppression effort.	Joe Buffone/David Youssef /Andrew Zammit	11/02/2014	Complete and ongoing
H	Regional Communications Strategy be developed	Led by CFA media/communications, supported by EMJPIC.	12/02/2014	In progress





		2 people at regional level feeding directly back into EMJPIC.		
J	Community Meeting	Ensure that appropriate representation at regional level from the Team are available to support Community meeting.	14/02/2014	Complete
K	Department of Transport	Ensure that Vicroads are engaged to:  - Check that remote monitoring gear is operating correctly.  -Be aware that there is potential that current fire could be impacting on this section of the mine/road.  -Be engaged at regional level to support the community meeting regarding this issue.	14/02/2014	Complete  Note: monitoring equipment on the road is functioning
L	Communication  Explore options for videos to be produced for public information and induction onto worksite.	Joe Buffone to discuss with local media team	15/02/2014	
M	Emergency Management Planning for an Earthquake	Joe Buffone to discuss with local EMT	15/02/2014	
N	Representatives from State Strategic EMT Latrobe Valley to visit Traralgon RCC	<u>Representatives visited Traralgon RCC on 16 February and met with key regional personnel to discuss strategy documentation.</u>	16/02/2014	<u>Complete</u>
O	<u>EPA and Dept. of Health to discuss information that is</u>	Dept. of Health / WorkSafe	18/02/2014	





	<u>required to make decisions for community messaging. EPA to advise what data and information is available for Health. Dept. of Health and EPA to connect to discuss information re Health requires to make decisions on Health messaging</u>			
<u>P</u>	<u>WorkSafe to consider using their network of clinical hygienists to develop a coordinated approach for consistent messaging to emergency responders at the incident.</u>	<u>WorkSafe</u>		
<u>Q</u>	<u>EPA / Health to conduct analysis using known data identify if there are any key risk times within the day and any other trends available.</u>	<u>Dept. of Health / WorkSafe</u>		

## 6. COMMUNITY MESSAGING

Messaging to the community must be consistent and strategic, particularly where multiple agencies are providing community information (e.g. Environment Protection Authority; EPA). The release of media information is being coordinated with the mine operations personnel.

At the strategic level, the community messaging will continue to provide critical community information, including information about:

- health warnings
- potential community impacts
- other places to access information, including community meetings

EMJPIC will be linked with Regional Control.



## 7. MEETING FREQUENCY

Team will meet daily at 1030hrs or immediately after the SEMT meeting.

## 8. ENDORSEMENT

By: Assistant Regional Controller Latrobe Valley Mine Fire

Sign:

Date	Time	hrs
------	------	-----

Distribution:

