

21.02 MUNICIPAL VISION

14/01/2010
C62

The adopted Council and Community Vision is contained in *Latrobe 2021- The Vision for Latrobe Valley* and is of:

- *A vibrant region*
- *A caring and enterprising community*
- *A harmonious community*
- *A sustainable, safe, secure region*

The directions, initiatives and actions presented in *Latrobe 2021* are framed by four strategic objectives that will contribute to Latrobe City Council and the community remaining focussed on the actions that need to be taken to make *Latrobe 2021* a reality. Integral to Council being focussed on achieving the above *Latrobe 2021* 'Vision' is the commitment of Council to its stated values of:

Sustainability:

- To promote the responsible and sustainable care of our built and natural environment for the use and enjoyment of the people who make up the vibrant community of Latrobe Valley.
- To provide leadership and to facilitate a well connected, interactive economic environment in which to do business.

Liveability:

- To promote and support social, recreational, cultural and community life by providing both essential and innovative amenities, services and facilities within the municipality.

Community Capacity Building:

- To empower the community through enhancing community advocacy, leadership, partnerships, inclusiveness and participation.

Governance:

- To ensure governance and leadership through a strong commitment and adherence to democratic processes and legislative requirements.

Of these, it is the 'Sustainability' and 'Liveability' issues of *Latrobe 2021* which have the clearest relationship with the planning scheme and these two themes are addressed in the **Municipal Strategic Statement** at Clauses 21.03 to 21.07 (inclusive) under the following headings:

- Natural Environment Sustainability.
- Built Environment Sustainability.
- Main Towns
- Economic Sustainability.
- Liveability.

Latrobe City Council has also developed an 'Integrated Planning Framework' to ensure that all of the actions Council undertakes, and the policies and strategies that are developed, work towards the achievement of the vision for Latrobe expressed in the *Latrobe 2021* Vision. The 'Integrated Planning Framework' comprises a series of corporate and strategic planning tools to implement the Vision being:

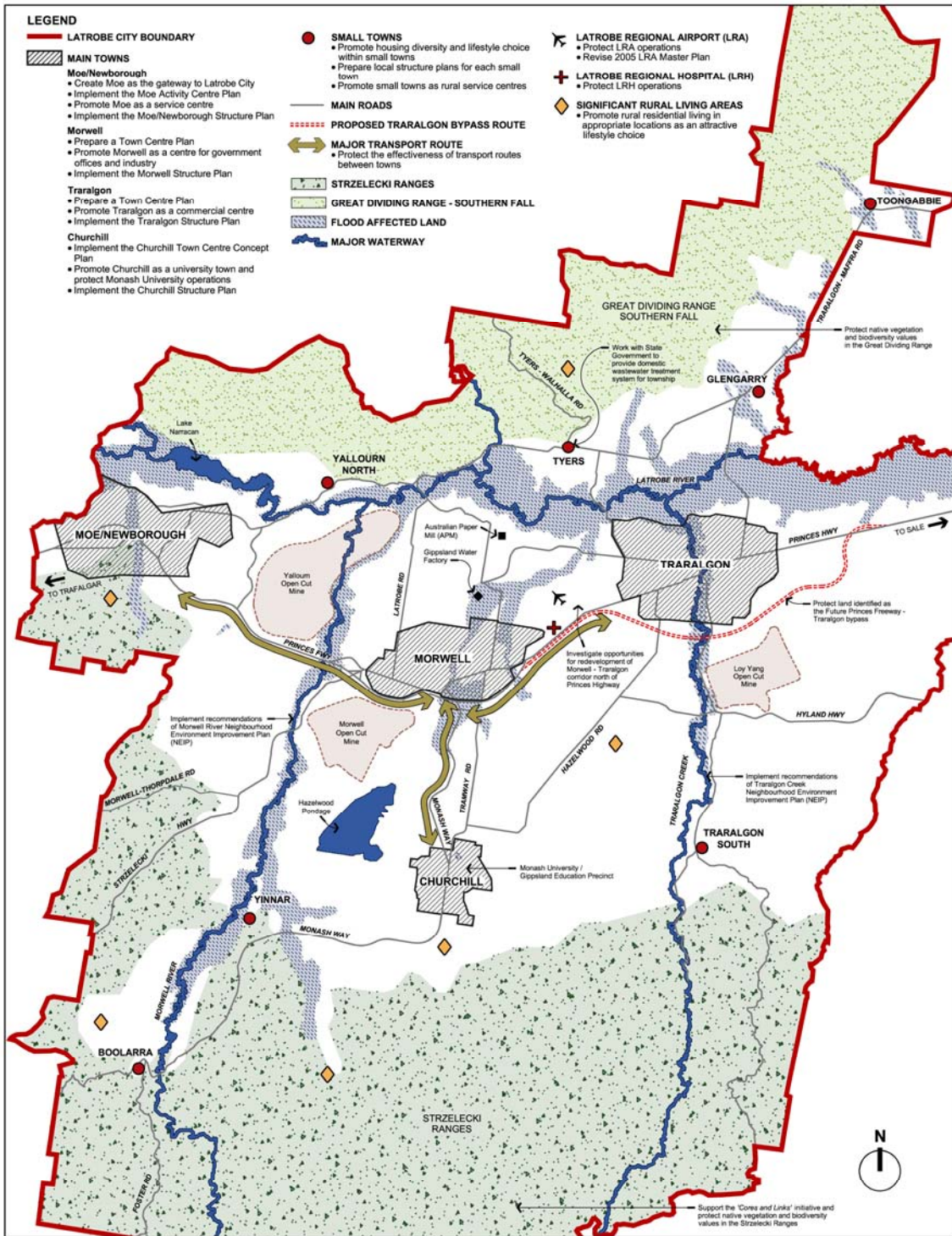
Latrobe 2021 provides the broad future directions for Latrobe. It is Council's most important strategic document which contains directions, objectives and indicators by which Council will monitor progress for the community as a whole.

Latrobe City Council Plan which contains four-year strategies, indicators and a strategic resource plan that contributes to achieving the key objectives of the *Latrobe 2021* Vision.

Latrobe City Council Annual Business Plan and Budget which identifies the allocation of resources to Latrobe City Council's services and projects, to be delivered over the financial year.

This **Municipal Strategic Statement** links the above elements of the 'Integrated Planning Framework' and provides the objectives and strategies for land use planning in the municipality focussing on 'sustainability' and 'liveability'.

Latrobe City Strategic Land Use Framework Plan



LATROBE PLANNING SCHEME - LOCAL PROVISION

	<p>SCALE:</p> <p>Kilometres Australian Map Grid Zone 55</p>	<p>LATROBE CITY STRATEGIC LAND USE FRAMEWORK PLAN</p> <p>POLICY</p>
--	---	---