

# Alcoa Anglesea PIP



# INDEX

| <b>CONTENT</b>                       | <b>PAGE</b> |
|--------------------------------------|-------------|
| Wildfire Pre Incident Plan           | 3 - 4       |
| Open Cut Coal Fire Pre Incident Plan | 5 - 6       |
| Structure Pre Incident Plan          | 7 - 8       |
| Hazmat Pre Incident Plan             | 9 - 10      |
| Rescue Pre Incident Plan             | 11 - 12     |
| Site Map                             | 13 - 14     |
| Locality Map                         | 15          |

|   |                 |   |
|---|-----------------|---|
|  | <h1>Alcoa</h1>  | <b>Pre Incident Plan No.</b><br><h1>ANGL0027</h1>             |
|   |                 | <b>KEYS: No</b>   |
| <b>ANGLESEA FIRE BRIGADE</b><br><b>Pre Incident Plan</b>                          | <b>WILDFIRE</b> | <b>Map Ref: SVC 6864 E13</b><br><b>Assignment Area ANGL3A</b> |


|   |   |
|---|---|
| <b>Premises Contact Details / Information</b>     | <b>BH – 5263 4200 Control Room – 52634231</b><br><b>MAIN USE – Power Generation</b><br><b>CONSTRUCTION TYPE – Steel framed, corrugated aluminium exterior</b>                             |
| <b>Access</b>                                     | <b>MAIN ACCESS – Camp Rd</b><br><b>SECONDARY ACCESS – Coal Mine Rd.</b>   |
| <b>Occupancy</b>                                  | <b>STAFF – Operating Hours – 24 hr operation</b>  |
| <b>CFA Staging Area</b>                           | <b>Initial response:</b> Alcoa car park, Camp Road<br><b>Escalated Response:</b> Anglesea recreation reserve, Ellimatta Road  |
| <b>Evacuation Area/s</b>                          | Anglesea recreation reserve, Ellimatta Road   |
| <b>CRITICAL INFRASTRUCTRE</b>                     | As per attached map   |
| <b>- Water supplies</b><br><b>- Fire Hydrants</b> | As per attached<br>Hydrant – Cnr Camp Road and Wilkin St<br>Note: Water supplies limited above 4 <sup>th</sup> floor of power station   |
| <b>Exposures</b>                                  | <ul style="list-style-type: none"> <li>• Chemical laboratory (admin building)</li> <li>• Bulk chemical storages</li> <li>• Coal bunker (level 5)</li> <li>• Open cut coal mine</li> </ul> |
| <b>Considerations</b>                             | <ul style="list-style-type: none"> <li>• Carbon monoxide monitoring required for all fires involving coal</li> <li>• Anglesea Local Response Plan – Bushfire</li> </ul>                   |

| <b>LEVEL 1 / C RESPONSE (3 brigade)</b>  | <b>TASK / LOCATION</b>  |
|--|---|
| <b>Anglesea Tanker 1</b><br><b>Anglesea Tanker 2</b><br><b>Anglesea Pumper</b> | <ul style="list-style-type: none"> <li>• Establish control point</li> <li>• Alcoa car park (main gate), Camp Road, Anglesea</li> <li>• Alcoa car park (main gate), Camp Road, Anglesea</li> </ul> |
| <b>Torquay Tanker T1</b>   | <ul style="list-style-type: none"> <li>• Alcoa car park (main gate), Camp Road, Anglesea</li> </ul>   |
| <b>Bellbrae Tanker T1</b>  | <ul style="list-style-type: none"> <li>• Alcoa car park (main gate), Camp Road, Anglesea</li> </ul>   |

| <b>LEVEL 2 RESPONSE<br/>By Request, Not Automatic</b> | <b>Appliance</b>   | <b>Task / Location</b>   |
|---|--|--|
| <b>Additional Support</b>                             | <b>Tankers</b> <ul style="list-style-type: none"> <li>• Aireys Inlet T1</li> <li>• Belmont T1</li> <li>• Freshwater Creek T1</li> <li>• Aireys Inlet T2</li> <li>• Torquay T2</li> </ul> DELWP/Parks<br>Strike Teams<br><br>Pumper Strike Teams<br><br>Bulk Water Tanker<br><br>Region Water Trailer | Staging area Alcoa car park (main gate), Camp Road, Anglesea as per attached map |
| <b>RDO</b>  | Vicfire  | Control Point - Alcoa car park (main gate), Camp Road, Anglesea                  |
| <b>Power</b>  | Vicfire  | Alcoa car park (main gate), Camp Road, Anglesea                                  |
| <b>Gas Company</b>                                    | Vicfire  | Alcoa car park (main gate), Camp Road, Anglesea                                  |

|                            |  |   |
|----------------------------|--|---|
| <b>Special Hazards</b>     | High Voltage Transmission Lines , Asbestos, Bulk Chemicals (Refer MSDS available on scene), Coal Bunker on level 5 |   |
| <b>Services</b>            | <b>Gas</b>   | Bulk gas storage isolation at supply  |
|                            | <b>Power</b>   | All electrical services isolated from control room by ERT member, if supply isolation cannot be achieved contact site engineer. |
| <b>Additional Comments</b> | Appliances must drive on designated roadways and at night escorted by member of ERT                                |   |


|   |   |
|---|---|
| <b>Date of last review – April 2015</b> | <b>Copies to: Bellbrae, Torquay, Belmont and Aireys Inlet</b> |
|---|---|

|   |  |  |
|---|--|--|
|  | <h1>Alcoa</h1>   | <b>Pre Incident Plan No.</b><br><h2>ANGL0027</h2>              |
|   |  | <b>KEYS: No</b>  |
| <b>ANGLESEA FIRE BRIGADE</b><br><b>Pre Incident Plan</b>                          | <b>Open Cut Coalmine Fire</b>  | <b>Map Ref: SVC 6864 E13</b><br><b>Assignment Area ANGL 3A</b> |
| <b>Premises Contact Details / Information</b>                                     | <b>BH – 5263 4200 Control Room – 52634231</b><br><b>MAIN USE – Power Generation</b><br><b>CONSTRUCTION TYPE – Steel framed, corrugated aluminium exterior</b>  |  |
| <b>Access</b>   | <b>MAIN ACCESS – Camp Rd</b><br><b>SECONDARY ACCESS – Coal Mine Rd.</b>  |  |
| <b>Occupancy</b>  | <b>STAFF – Operating Hours – 24 hr. operation</b>  |  |
| <b>CFA Staging Area</b>   | <b>Initial response: Alcoa car park, Camp Road</b><br><b>Escalated Response: Anglesea recreation reserve, Ellimatta Road</b>   |  |
| <b>Evacuation Area/s</b>  | Anglesea recreation reserve, Ellimatta Road  |  |
| <b>CRITICAL INFRASTRUCTRE</b>   | As per attached map  |  |
| <b>- Water supplies</b><br><b>- Fire Hydrants</b>                                 | As per attached<br>Hydrant – Cnr Camp Road and Wilkin St<br>Note: Water supplies limited above 4 <sup>th</sup> floor of power station  |  |
| <b>Exposures</b>  | <ul style="list-style-type: none"> <li>• Open cut coal mine</li> </ul>   |  |
| <b>Considerations</b>   | <ul style="list-style-type: none"> <li>• Carbon monoxide monitoring required for all fires involving coal</li> <li>• P2 masks to be worn for all fire fighting operations</li> <li>• Atmospheric Monitoring external to site</li> <li>• Anglesea Local Response Plan – Bushfire</li> </ul> |  |
| <b>LEVEL 1 / C RESPONSE (3 brigade)</b>   | <b>TASK / LOCATION</b>   |  |
| <b>Anglesea Tanker 1</b><br><b>Anglesea Tanker 2</b><br><b>Anglesea Pumper</b>    | <ul style="list-style-type: none"> <li>• Establish control point</li> <li>• Alcoa car park (main gate), Camp Road, Anglesea</li> <li>• Alcoa car park (main gate), Camp Road, Anglesea</li> </ul>  |  |
| <b>Torquay Tanker T1</b>  | <ul style="list-style-type: none"> <li>• Alcoa car park (main gate), Camp Road, Anglesea</li> </ul>  |  |
| <b>Bellbrae Tanker T1</b>   | <ul style="list-style-type: none"> <li>• Alcoa car park (main gate), Camp Road, Anglesea</li> </ul>  |  |

| <b>LEVEL 2<br/>RESPONSE<br/>By Request, Not<br/>Automatic</b> | <b>Appliance</b>  | <b>Task / Location</b>   |
|---|---|--|
| <b>Additional<br/>Support</b>                                 | <p><b>Tankers</b></p> <ul style="list-style-type: none"> <li>• Aireys Inlet T1</li> <li>• Belmont T1</li> <li>• Freshwater Creek T1</li> <li>• Aireys Inlet T2</li> <li>• Torquay T2</li> </ul> <p>Tanker Strike Teams<br/>Pumper Strike Teams<br/>Corio Heavy Hazmat<br/>CFA Scientific Officer<br/>(Contact via FSCC)</p> <p>Thermal Imaging Camera's</p> <ul style="list-style-type: none"> <li>• Aireys's Inlet</li> <li>• Torquay</li> <li>• Belmont</li> <li>• Geelong</li> <li>• Ocean Grove</li> </ul> <p>Bulk Water Tanker<br/>CFA Health Support Team</p> | Staging area Alcoa car park (main gate), Camp Road, Anglesea as per attached map |
| <b>RDO</b>  | Vicfire   | Control Point - Alcoa car park (main gate), Camp Road, Anglesea                  |
| <b>Powercor</b>   | Vicfire   | Alcoa car park (main gate), Camp Road, Anglesea                                  |
| <b>Gas and Fuel</b>   | Vicfire   | Alcoa car park (main gate), Camp Road, Anglesea                                  |
| <b>EPA</b>  | Vicfire   | Alcoa car park (main gate), Camp Road, Anglesea                                  |

|                            |   |
|----------------------------|---|
| <b>Special Hazards</b>     | High Voltage Transmission Lines , Asbestos, Bulk Chemicals (Refer MSDS available on scene), Coal Bunker on level 5  |
| <b>Services</b>            | <p><b>Gas</b> Bulk gas storage isolation at supply</p> <p><b>Power</b> All electrical services isolated from control room by ERT member, if supply isolation cannot be achieved contact duty electrician from Alcoa Point Henry</p> |
| <b>Additional Comments</b> | Appliances must drive on designated roadways and at night escorted by member of ERT   |

|   |   |
|---|---|
| <b>Date of last review – April 2015</b> | <b>Copies to: Bellbrae, Torquay, Belmont, Geelong City and Aireys Inlet</b> |
|---|---|


|   |   |  |
|---|---|--|
|  | <b>Alcoa</b>  | Pre Incident Plan No.<br><b>ANGL0027</b>                 |
|   |   | <b>KEYS: No</b>  |
| <b>ANGLESEA FIRE BRIGADE<br/>Pre Incident Plan</b>                                | <b>Structure Fire</b>   | <b>Map Ref: SVC 6864 E13<br/>Assignment Area ANGL 3A</b> |
| <b>Premises Contact<br/>Details / Information</b>                                 | BH – 5263 4200 <b>Control Room</b> – 52634231<br><b>MAIN USE</b> – Power Generation<br><b>CONSTRUCTION TYPE</b> – Steel framed, corrugated aluminium exterior |  |
| <b>Access</b>   | <b>MAIN ACCESS</b> – Camp Rd<br><b>SECONDARY ACCESS</b> – Coal Mine Rd.   |  |
| <b>Occupancy</b>  | <b>STAFF – Operating Hours</b> – 24 hr. operation   |  |
| <b>CFA Staging Area</b>   | <b>Initial response:</b> Alcoa car park, Camp Road<br><b>Escalated Response:</b> Anglesea recreation reserve, Ellimatta Road                                  |  |
| <b>Evacuation Area/s</b>  | Anglesea recreation reserve, Ellimatta Road   |  |
| <b>CRITICAL<br/>INFRASTRUCTRE</b>   | As per attached map   |  |
| <b>- Water supplies<br/>- Fire Hydrants</b>                                       | As per attached<br>Hydrant – Cnr Camp Road and Wilkin St<br>Note: Water supplies limited above 4 <sup>th</sup> floor of power station                         |  |
| <b>Exposures</b>  | <ul style="list-style-type: none"> <li>• Open cut coal mine</li> </ul>  |  |
| <b>Considerations</b>   | <ul style="list-style-type: none"> <li>• Carbon monoxide monitoring required for all fires involving coal</li> <li>• Vehicle Movements etc.</li> </ul>        |  |
| <b>LEVEL 1 / F<br/>RESPONSE (5 brigades)</b>                                      | <b>TASK / LOCATION</b>  |  |
| <b>Anglesea Pumper<br/>Anglesea Tanker 1 &amp; 2</b>                              | <ul style="list-style-type: none"> <li>• Establish control point</li> <li>• Alcoa car park (main gate), Camp Road, Anglesea</li> </ul>                        |  |
| <b>Bellbrae Tanker</b>  | <ul style="list-style-type: none"> <li>• Alcoa car park (main gate), Camp Road, Anglesea</li> </ul>   |  |
| <b>Torquay Pumper</b>   | <ul style="list-style-type: none"> <li>• Alcoa car park (main gate), Camp Road, Anglesea</li> </ul>   |  |
| <b>Belmont Pumper</b>   | <ul style="list-style-type: none"> <li>• Alcoa car park (main gate), Camp Road, Anglesea</li> </ul>   |  |
| <b>Geelong Ladder Platform</b>  | <ul style="list-style-type: none"> <li>• Alcoa car park (main gate), Camp Road, Anglesea</li> </ul>   |  |

| <b>LEVEL 2<br/>RESPONSE<br/>By Request, Not<br/>Automatic</b> | <b>Appliance<br/>Structure</b>   | <b>Task / Location</b>  |
|---|--|---|
| <b>Additional<br/>Support</b>                                 | <ul style="list-style-type: none"> <li>• Aireys Inlet</li> <li>• Corio<br/>Teleboom</li> </ul> <p>Corio PE Support</p> <p>Heavy Pumpers</p> <ul style="list-style-type: none"> <li>- Geelong City</li> <li>- Geelong West</li> <li>- Highton</li> <li>- Grovedale</li> </ul> | <ul style="list-style-type: none"> <li>• Staging area Alcoa cark park (main gate), Camp Road, Anglesea as per attached map</li> </ul> |
| <b>RDO</b>  | Vicfire  | Alcoa cark park (main gate), Camp Road, Anglesea then to Control Point  |
| <b>Powercor</b>   | Vicfire  | Alcoa cark park (main gate), Camp Road, Anglesea  |
| <b>Gas and Fuel</b>   | Vicfire  | Alcoa cark park (main gate), Camp Road, Anglesea  |

|   |   |
|---|---|
| <b>Special Hazards</b>                                | High Voltage Transmission Lines , Asbestos, Bulk Chemicals, Coal Bunker on level 5  |
| <b>Services</b><br><br><b>Gas</b><br><br><b>Power</b> | <p>Bulk gas storage isolation at supply</p> <p>All electrical services isolated from control room by ERT member, if supply isolation cannot be achieved contact duty electrician from Alcoa Point Henry</p> |
| <b>Additional Comments</b>                            | Appliances must drive on designated roadways and at night escorted by member of ERT   |

|                                  |  |
|----------------------------------|--|
| Date of last review – April 2015 | Copies to: Bellbrae, Torquay, Belmont, Geelong City and Aireys Inlet |
|----------------------------------|--|



|   |   |  |
|---|---|--|
|  | <b>Alcoa</b>  | <b>Pre Incident Plan No.</b><br><b>ANGL0027</b>          |
|   |   | <b>KEYS: No</b>  |
| <b>ANGLESEA FIRE BRIGADE<br/>Pre Incident Plan</b>                                | <b>Hazmat</b>   | <b>Map Ref: SVC 6864 E13<br/>Assignment Area ANGL 3A</b> |
| <b>Access</b>   | <b>SECONDARY ACCESS</b> – Coal Mine Rd.   |  |
| <b>Occupancy</b>  | <b>STAFF – Operating Hours</b> – 24 hr operation  |  |
| <b>CFA Staging Area</b>   | <b>Initial response:</b> Alcoa car park, Camp Road<br><b>Escalated Response:</b> Anglesea recreation reserve, Ellimatta Road                                |  |
| <b>Evacuation Area/s</b>  | As per attached map – 3 designated areas marked   |  |
| <b>- Water supplies<br/>- Fire Hydrants</b>                                       | As per attached<br>Note: Water supplies limited above 4 <sup>th</sup> floor of power station  |  |
| <b>Exposures</b>  | <ul style="list-style-type: none"> <li>• Chemical laboratory (admin building)</li> <li>• Bulk chemical storages</li> <li>• Coal bunker (level 5)</li> </ul> |  |
| <b>LEVEL 1 / D<br/>RESPONSE (3 brigade)</b>                                       | <b>TASK / LOCATION</b>  |  |
| <b>Anglesea Pumper<br/>Anglesea Tanker 1 &amp; 2</b>                              | <ul style="list-style-type: none"> <li>• Establish control point</li> <li>• Alcoa car park (main gate), Camp Road, Anglesea</li> </ul>                      |  |
| <b>Bellbrae Tanker</b>  | <ul style="list-style-type: none"> <li>• Alcoa car park (main gate), Camp Road, Anglesea</li> </ul>   |  |
| <b>Torquay Pumper</b>   | <ul style="list-style-type: none"> <li>• Alcoa car park (main gate), Camp Road, Anglesea</li> </ul>   |  |
| <b>Belmont Pumper</b>   | <ul style="list-style-type: none"> <li>• Alcoa car park (main gate), Camp Road, Anglesea</li> </ul>   |  |

| <b>LEVEL 2<br/>RESPONSE<br/>By Request, Not<br/>Automatic</b> | <b>Appliance</b>   | <b>Task / Location</b>  |
|---|--|---|
| <b>Additional<br/>Support</b>                                 | <ul style="list-style-type: none"> <li>• Aireys Inlet</li> <li>• Freshwater Creek</li> <li>• Connewarre</li> <li>• Corio PE Support (CABA)</li> <li>• Corio Heavy Hazmat</li> <li>• BA &amp; Gas Suit Wearers</li> <li>• Region Water Trailer</li> </ul> | <p>Alcoa car park, Camp Road</p> <p><b>or</b></p> <p>Anglesea recreation reserve, Ellimatta Road<br/>(to be advised by I/C)</p> |
| <b>RDO</b>  | Vicfire  | Alcoa car park (main gate), Camp Road, Anglesea then to Control Point   |
| <b>Power Company</b>  | Vicfire  | Alcoa car park (main gate), Camp Road, Anglesea   |
| <b>Gas Company</b>  | Vicfire  | Alcoa car park (main gate), Camp Road, Anglesea   |
| <b>EPA</b>  | Vicfire  | Alcoa car park (main gate), Camp Road, Anglesea   |
| <b>CFA Scientific Officer</b>                                 | RDO  | Alcoa car park (main gate), Camp Road, Anglesea   |
| <b>Work cover</b>   | RDO  | Alcoa car park (main gate), Camp Road, Anglesea   |

|   |  |
|---|--|
| <b>Special Hazards</b>                        | High Voltage Transmission Lines , Asbestos, Bulk Chemicals (Refer MSDS available on scene), Coal Bunker on level 5   |
| <b>Services</b><br><b>Gas</b><br><b>Power</b> | <p>Bulk gas storage isolation at supply</p> <p>All electrical services isolated from control room by ERT member, if supply isolation cannot be achieved contact duty electrician from Alcoa Point Henry</p>                      |
| <b>Additional Comments</b>                    | <ul style="list-style-type: none"> <li>• Appliances must drive on designated roadways and at night escorted by member of ERT</li> <li>• I/C must liaise with ERT about chemicals on site and local weather conditions</li> </ul> |

|   |   |
|---|---|
| <b>Date of last review – April 2015</b> | <b>Copies to: Bellbrae, Torquay, Belmont, Geelong City and Aireys Inlet</b> |
|---|---|

|   |               |  |
|---|---------------|--|
|  | <b>Alcoa</b>  | <b>Pre Incident Plan No.</b><br><b>ANGL0027</b>                |
|   |               | <b>KEYS: No</b>  |
| <b>ANGLESEA FIRE BRIGADE</b><br><b>Pre Incident Plan</b>                          | <b>RESCUE</b> | <b>Map Ref: SVC 6864 E13</b><br><b>Assignment Area ANGL 3A</b> |

|   |   |
|---|---|
| <b>Premises Contact Details / Information</b> | <b>BH – 5263 4200 Control Room – 52634231</b><br><b>MAIN USE – Power Generation</b><br><b>CONSTRUCTION TYPE – Steel framed, corrugated aluminium exterior</b>   |
| <b>Access</b>                                 | <b>MAIN ACCESS – Camp Rd</b><br><b>SECONDARY ACCESS – Coal Mine Rd.</b>   |
| <b>Occupancy</b>                              | <b>STAFF – Operating Hours – 24 hr operation</b>  |
| <b>CFA Staging Area</b>                       | <ul style="list-style-type: none"> <li>Alcoa car park (main gate), Camp Road</li> </ul>   |
| <b>Evacuation Area/s</b>                      | <ul style="list-style-type: none"> <li>As per attached map – 3 designated areas marked</li> </ul>   |
| <b>Exposures</b>                              | <ul style="list-style-type: none"> <li>Dangerous goods stored on site</li> <li>Confined spaces onsite which may only be entered with permit</li> </ul>  |
| <b>Considerations</b>                         | <ul style="list-style-type: none"> <li>Ensure lockouts and liaise with Alcoa representatives before all actions to be undertaken for scene safety</li> <li>Obtain copy of confined space access permit if rescue is involved</li> </ul> |

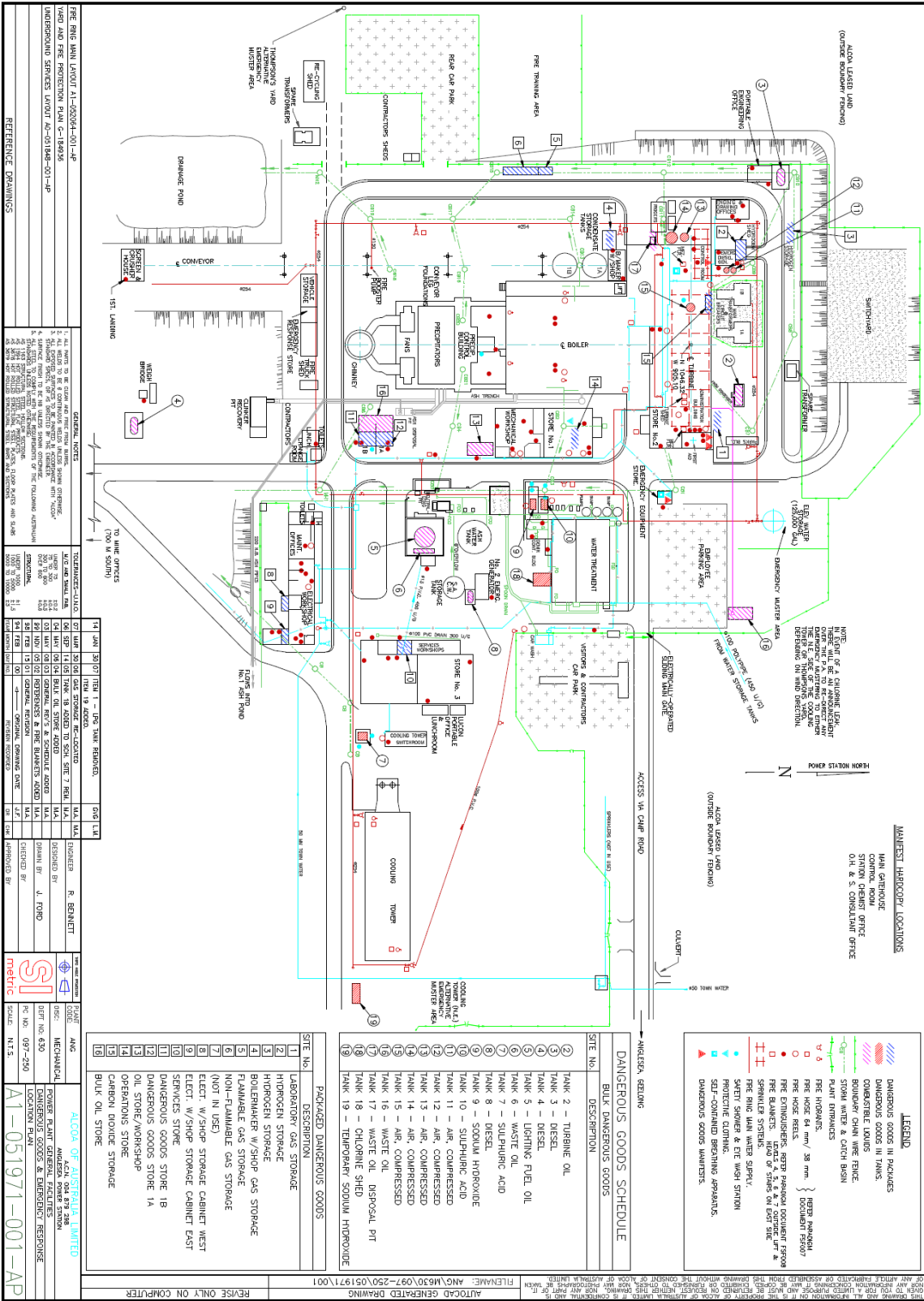
| <b>LEVEL 1 / D RESPONSE (4 brigade)</b>  | <b>TASK / LOCATION</b>  |
|--|---|
| <b>Anglesea Pumper</b><br><b>Anglesea Tanker 2</b><br><b>Anglesea Tanker 1</b> | <ul style="list-style-type: none"> <li>Establish control point</li> <li>Alcoa car park (main gate), Camp Road, Anglesea</li> <li>Alcoa car park (main gate), Camp Road, Anglesea</li> </ul> |
| <b>Belmont Pumper</b>  | <ul style="list-style-type: none"> <li>Alcoa car park (main gate), Camp Road, Anglesea</li> </ul>   |
| <b>Torquay Pumper</b>  | <ul style="list-style-type: none"> <li>Alcoa car park (main gate), Camp Road, Anglesea</li> </ul>   |
| <b>Rescue</b>  | South Barwon SES<br>Geelong City Rescue   |

| <b>LEVEL 2<br/>RESPONSE<br/>By Request, Not<br/>Automatic</b> | <b>Appliance</b>  | <b>Task / Location</b>  |
|---|---|---|
| <b>Additional<br/>Support</b>                                 | <ul style="list-style-type: none"> <li>• Aireys Inlet</li> <li>• Geelong Ladder Platform</li> <li>• Corio Teleboom</li> <li>• Corio PE Support</li> </ul> | <ul style="list-style-type: none"> <li>• Alcoa car park (main gate), Camp Road, Anglesea</li> </ul> |
| <b>RDO</b>  | Vicfire   | Control Point - Alcoa car park (main gate), Camp Road, Anglesea                                     |
| <b>Power Company</b>  | Vicfire   | Alcoa car park (main gate). Camp Road, Anglesea   |
| <b>Gas Company</b>  | Vicfire   | Alcoa car park (main gate). Camp Road, Anglesea   |
| <b>Ambulance</b>  | Vicfire   | Alcoa car park (main gate). Camp Road, Anglesea   |
| <b>VicPol</b>   | Vicfire   | Alcoa car park (main gate). Camp Road, Anglesea   |
| <b>Work cover</b>   | RDO   | Alcoa car park (main gate). Camp Road, Anglesea   |

|                            |   |
|----------------------------|---|
| <b>Special Hazards</b>     | High Voltage Transmission Lines , Asbestos, Bulk Chemicals (Refer MSDS available on scene), Coal Bunker on level 5  |
| <b>Services</b>            | <p><b>Gas</b> Bulk gas storage isolation at supply</p> <p><b>Power</b> All electrical services isolated from control room by ERT member, if supply isolation cannot be achieved contact duty electrician from Alcoa Point Henry</p> |
| <b>Additional Comments</b> | Appliances must drive on designated roadways and at night escorted by member of ERT   |

|   |   |
|---|---|
| <b>Date of last review – April 2015</b> | <b>Copies to: Bellbrae, Torquay, Belmont, Geelong City and Aireys Inlet</b> |
|---|---|





Copyright Alcoa of Australia



# Anglesea Alcoa Locality Map

