

DEPARTMENT OF
PRIMARY INDUSTRIES

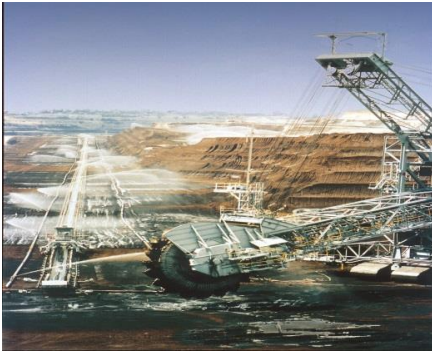
Rediscover the potential

Victoria



Developing the Latrobe Valley Resources Future Initiative

- \$1.5 million Initiative to encourage new brown coal- based investment in the Latrobe Valley including generating opportunities from products derived from coal
- Part of *Moving Forward*, the government's Provincial Victoria Statement
- Other work includes a coal inventory, coal model, CCS report, groundwater report, new mining techniques and a Vision for the Latrobe Valley



Purpose of today's workshop



- DPI has commissioned a report on **“Rehabilitation Options and Scenarios”**
- Today's workshop will provide input to that report

Report objectives

- Analyse the potential options for the rehabilitation of current and future mines in the Latrobe Valley
- Provide recommendations for the development of a rehabilitation strategy for the Latrobe Valley



Context

- LV2100 recommendation to investigate alternative methods to rehabilitation



- Developing the Latrobe Valley Resources Future Initiative - Water and Regional Mining Issues (overburden disposal and the future development of coal mines) - outsourced

- Current government guidelines, legislation & policy regarding water, environment, & mining

Near Zero Emissions Policy Framework

- Outlines the overarching principles to exploit brown coal reserves and deliver the economic benefits to the State whilst meeting the government's long term target of reducing GHG by 60 per cent by 2050 compared to 2000 levels
- Discussion paper circulated to key stakeholders, paper to be released later this year



Clean Coal Authority



- \$7.1m election commitment
- Develop a strategic plan to identify the extent and appropriate uses of Victorian coal, coordinate R&D and match appropriate clean coal technologies to the available coal
- Government is still working on this commitment

Objectives for the day

- Raise high level issues
- Consider medium and long term future
 - ❖ Changing approach to groundwater, mining etc
 - ❖ Changing community expectations
- Learning from past mistakes
- Provide input to this report