



Hazelwood Community Briefing

October 2015

GDF SUEZ

 **MITSUI & CO.**

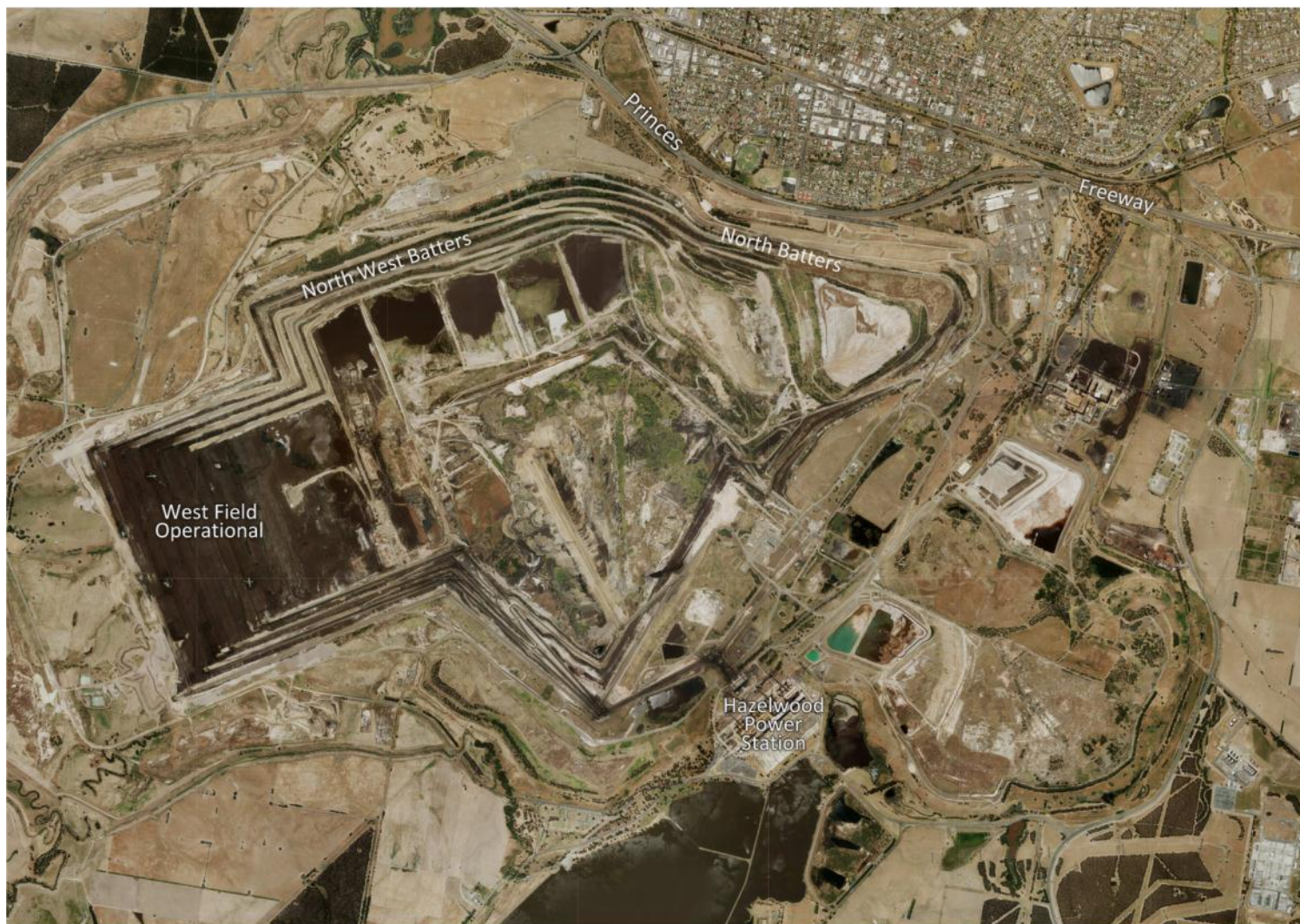
Hazelwood Community Briefing Overview

- Overview and introductions
- Inquiry Outcomes
 - 17 actions which GDF SUEZ voluntarily agreed to undertake, which were affirmed by the Board of Inquiry in its final report (“**affirmations**”)
 - Six recommendations made to GDF SUEZ by the Board of Inquiry in its final report (“**recommendations**”)
- Where we are today – GDF SUEZ progress on the affirmations and recommendations
- Preparations for the coming summer
 - Events of 6 October 2015 Extreme Fire Danger Day
- Rehabilitation | Northern Batters works

Hazelwood Mine - Overview



Hazelwood Mine - Overview





Coal Mine Emergency Management Taskforce

GDF SVEZ

 MITSUI & CO.

Coal Mine Emergency Management Taskforce Update

- Continuing to meet regularly with strong industry involvement
- Major initiatives completed, monitored and further improved
- Smoke Management Framework introduced for state-wide implementation (Incorporates the management of public health impacts from large-scale, extended smoke events).
 1. Standard for Managing Exposure to Significant Carbon Monoxide emissions
 2. Community Smoke, Air Quality and Health Protocol
 3. Rapid Air Monitoring Response for Community Health
- Exercise Latrobe 15 – Conducted 8 and 9 October 2015

HAZELWOOD MINE FIRE INQUIRY RECOMMENDATIONS AUGUST 2014



Hazelwood
Mine Fire
Inquiry

Inquiry Outcomes

GDF SUEZ



Affirmation of actions intended to be taken by GDF SUEZ

17 Affirmations of which 16 are completed

- Nominate a group of staff to be trained in the Phoenix Rapid fire modelling tool prior to the 2014/2015 fire season.
 - **STATUS: COMPLETED:** Training conducted by the CFA for 9 GDF SUEZ employees.
- Offer enhanced training prior to the 2014/2015 fire season and on an ongoing basis, to personnel who are intended to perform a role under the emergency command structure and relevant emergency service agencies.
 - **STATUS: COMPLETED:** Training for emergency service agencies has been completed. GDF SUEZ's emergency command personnel have completed an external Incident Controllers Course.

Key personnel participated in the 'Latrobe 15' Emergency Management Victoria Exercise in October 2015 which involved emergency agencies, generators, heavy industry and government regulators.

- Establish an emergency command structure at the mine to deal with Extreme Fire Danger Days.
 - **STATUS: COMPLETED:** GDF SUEZ's Emergency Response Plan and Mine Fire Instructions have been updated to reflect new command structures devised for Extreme Fire Danger Days within the Mine. Ongoing obligation for each Extreme Fire Danger Day.
- Notify CFA of the identity and contact details of those personnel holding these roles.
 - **STATUS: COMPLETED.** CFA will be advised of these details on each Extreme Fire Danger day. Ongoing obligation for each Extreme Fire Danger Day.

Affirmation of actions intended to be taken by GDF SUEZ

- On Extreme Fire Danger Days, GDF SUEZ ensure more personnel are rostered on and additional contractors are available for dedicated fire protection duties.
 - **STATUS: COMPLETED.** GDF SUEZ's Emergency Response Plan and Mine Fire Instructions have been substantially revised in order to include a requirement for additional personnel with fire protection duties on Extreme Fire Danger Days. Ongoing obligation for each Extreme Fire Danger Day.
- Upgrade signage within the mine to make orientation easier for non-mine personnel.
 - **STATUS: COMPLETED.** Signage has been installed.
- Negotiate with SP AusNet regarding a feasibility study to upgrade the MHO substation from temporary to permanent standard.
 - **STATUS: COMPLETED.** AusNet Services study on MHO completed and accepted. Main finding being that the MHO substation cannot supply sufficient power to meet the Hazelwood mine power requirements, however alternative improvements have been put in place to ensure power supply.
- Initiate a program for reducing vegetation in the worked out areas of the Northern batters to reduce fire risk commencing in the areas closest to Morwell.
 - **STATUS: COMPLETED.** Primary vegetation removal has been completed from the Northern batters and grass levels above the Mine. A program for small residual areas, which are more difficult to access, has been developed and actioned.
- Maintain and continue to use the additional pipe system located in the northern batters which was installed during the 2014 fire and install additional pipework as identified.
 - **STATUS: COMPLETED** and operational.

Affirmation of actions intended to be taken by GDF SUEZ

- Conduct a review of the current pipework and condition in the areas of the mine other than the eastern section of the northern batters.
 - **STATUS: COMPLETED.** A detailed review has been conducted by an external consultant and delivered to GDF SUEZ, with recommendations actioned.
- On Extreme Fire Danger Days GDF SUEZ instigate wetting down of non-operational areas.
 - **STATUS: COMPLETED.** GDF SUEZ's *Mine Fire Instructions* have been updated to include this requirement. Ongoing obligation for each Extreme Fire Danger Day.
- Nominate a representative to attend the meetings of the Municipal Fire Prevention Committee convened by Latrobe City Council.
 - **STATUS: COMPLETED.** Names of relevant GDF SUEZ personnel provided to Latrobe City Council.
- Nominate designated people to be in attendance at the CFA Incident Control Centre during an emergency which threatens the mine.
 - **STATUS : COMPLETED.** Names of relevant GDF SUEZ personnel provided to CFA.
- Review its own communications protocol to ensure that during the response to a fire which is capable of impacting on the community, it is able to communicate messages to the community via any protocol adopted following the review by all agencies.
 - **STATUS: COMPLETED.** GDF SUEZ has revised its communications protocols applicable to Hazelwood, and in future will engage with all Incident Controller briefings and media.

Affirmation of actions intended to be taken by GDF SUEZ

- Work with Victorian WorkCover Authority (**VWA**) to review its Safety Assessment and Safety Management System in light of regulations 5.3.21 and 5.3.23 of the *Occupational Health and Safety Regulations 2007 (Vic)*.
 - **STATUS: In progress.** VWA has completed a verification review, and GDF SUEZ has submitted an action plan to address the audit findings, which it is actively progressing.
- Develop a Carbon Monoxide management protocol for firefighter and mine employee safety prior to the 2014/2015 fire season, in consultation with VWA and CFA.
 - **STATUS: COMPLETED.** GDF SUEZ has substantially adopted the '*CFA District 10 Standard Operating Procedure Open Cut Mine Fire (Brown Coal) – Responding to fire procedure*'. GDF SUEZ has raised with the CFA several aspects of the Standard Operating Procedure which are not operationally suitable for Hazelwood personnel to follow. GDF SUEZ understands that its comments will be considered by the CFA and other government representatives at a Taskforce level.
- Undertake the rehabilitation set out in Exhibit 88 – Statement of James Faithful, annexure 5 and discuss the appropriate timing of each sequence of rehabilitation with the Department of State Development, Business and Innovation.
 - **STATUS: COMPLETED.** Rehabilitation of the nominated 9 hectare area on the northern batters of the mine has been carried out.

Recommendations to GDF SUEZ made by the Board of Inquiry

6 Recommendations of which 4 are completed



Recommendations to GDF SUEZ made by the Board of Inquiry – Cont'd.



Recommendation 16

- Fire Service Policy and Code of Practice



Recommendation 17

- Adopt Carbon Monoxide Protocol



Recommendation 18

- Improve Crisis Communications Strategy

Recommendation 13

- Revise Emergency Response Plan



GDF SUEZ revise its Emergency Response Plan, to:

- require an increased state of readiness on days of Total Fire Ban;
 - require pre-establishment of an Emergency Command Centre;
 - require pre-positioning of an accredited Incident Controller as Emergency Commander;
 - require any persons nominated as Emergency Commander to have incident controller accreditation and proficiency in the use of the Australasian Inter-service Incident Management System.
- **COMPLETED.** GDF SUEZ's *Emergency Response Plan* and *Mine Fire Instructions* have been substantially revised in order to address each of these elements. The revised procedures within the *Emergency Response Plan* and *Mine Fire Instructions* have been incorporated as part of the Mine's operations.

Recommendation 14

- Established back-up power supply



GDF SUEZ establish enhanced back-up power supply arrangements that do not depend wholly on mains power, to:

- ensure that the Emergency Command Centre can continue to operate if mains power is lost.
 - **COMPLETED:** An emergency backup diesel generator has been positioned and hard wired to the Mine's primary ECC. The secondary ECC is directly powered from the Power Station from multiple sources.
- ensure that the reticulated fire services water system can operate with minimal disruption if mains power is lost.
 - **COMPLETED:** AusNet Services has installed, at GDF SUEZ's expense, 66KV isolators on both of the main 66KV power supplies to the Mine.
 - Additional power lines and isolating switches have been installed, and nominated wooden poles replaced with concrete, to reduce the risk, and potential impact, of fire damage to internal power supplies.
 - Electricity supply has been established directly from the Power Station to pump house 50, and pump house 53. Both of these pumps stations (11 pumps) supply water to the fire service system within the Mine.
 - These measures provide for significant additional power security and redundancy within the Mine perimeter, and back up power to the water supply pump houses in the event of loss of mains power.

Recommendation 15

- Conduct Risk Assessment and Risk Implementation



GDF SUEZ:

- conduct, assisted by an independent consultant, a risk assessment of the likelihood and consequences of fire in the worked out areas of the Hazelwood mine, and an assessment of the most effective fire protection for the exposed coal surfaces prepare an implementation plan that ensures the most effective and reasonably practicable controls are in place to eliminate or reduce the risk of fire; and
- develop and implement the plan
 - **COMPLETED.** Risk assessment workshops were conducted in January assisted by an independent consultant with the final report accepted in April.
 - **In progress.** The implementation plan is being developed.
 - An additional risk assessment has been conducted across all Latrobe Valley brown coal mines under the auspices of DEDJTR, which was facilitated independently.

Recommendation 16

- Fire Service Policy and Code of Practice



GDF SUEZ:

- review its 'Mine Fire Service Policy and Code of Practice' so that it reflects industry best practice and ensures that, by taking a risk management approach, it is suitable for fire prevention, mitigation and suppression in all parts of the Hazelwood mine; and
 - **In progress:** GDF SUEZ has revised its *Mine Fire Service Policy and Code of Practice*. External consultants retained by GDF SUEZ have reviewed the revised Mine Fire Service Policy and Code of Practice, and provided input regarding further refinements from the perspective of industry best practice. There has been significant engagement with the CFA, other Latrobe Valley mines, DEDJTR and WorkSafe on suitable risk management procedures.
- incorporate the revised 'Mine Fire Service Policy and Code of Practice' into the approved work plan for the Hazelwood mine.
 - Further discussions required with DEDJTR regarding a Work Plan Variation, to be initiated following completion of the above item.

Recommendation 17

- Adopt Carbon Monoxide Protocol



GDF SUEZ:

- adopt and apply the firefighter carbon monoxide response protocol.
 - **COMPLETED.** GDF SUEZ Hazelwood has substantially adopted the '*CFA District 10 Standard Operating Procedure Open Cut Mine Fire (Brown Coal) – Responding to fire procedure*'. GDF SUEZ has raised with the CFA several aspects of the Standard Operating Procedure which are not operationally suitable for Hazelwood personnel to follow. GDF SUEZ understands that its comments will be further considered by the CFA and other government representatives at a Taskforce level.

Recommendation 18

- Improve Crisis Communications Strategy



GDF SUEZ:

- improve its crisis management communication strategy for the Hazelwood mine in line with international best practice.
 - **COMPLETED.** GDF SUEZ has revised its communications protocols applicable to Hazelwood, and in future will engage with all Incident Controller briefings and media.



Events of 6 October 2015

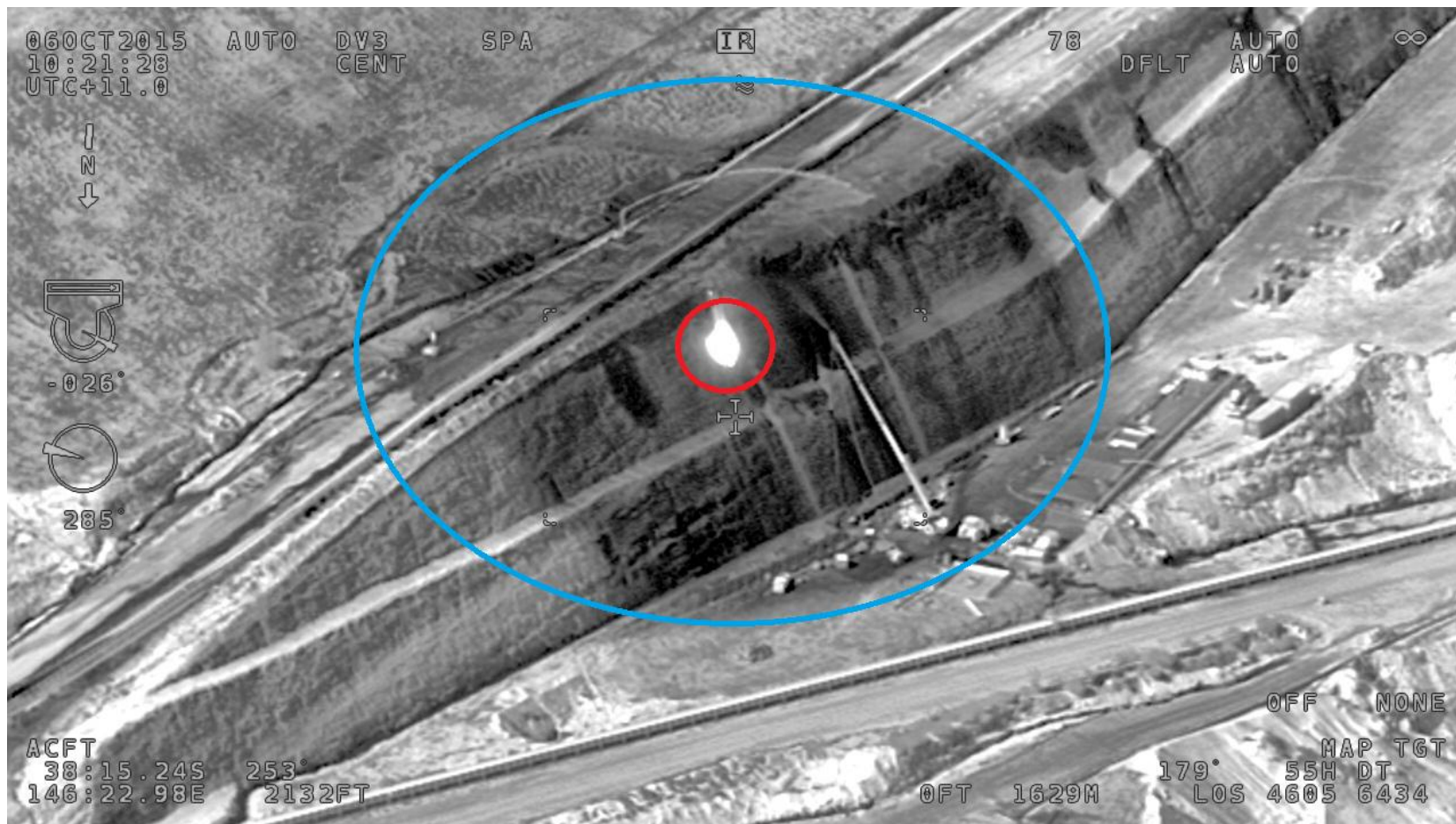
GDF SUEZ



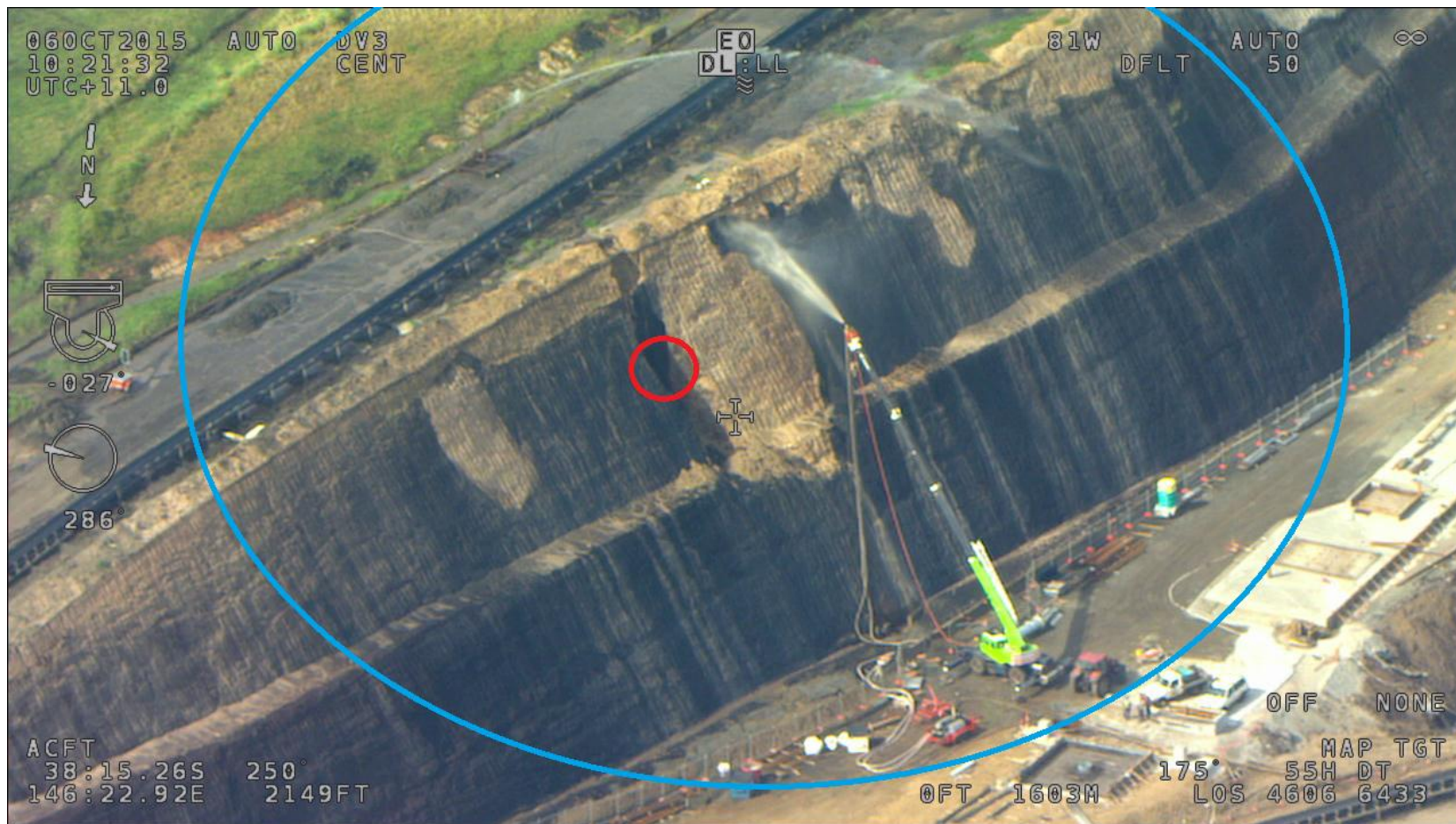
Hazelwood Mine | 6 October 2015

- Day of Extreme Fire Danger. Unseasonably high temperatures coupled with a forecast cool change with high winds.
- Hazelwood personnel worked with CFA District 27 operations to monitor a hotspot identified in the mine's old south east field.
- Ongoing wetting down of the area, mobilisation of fire suppression equipment and additional resources were deployed ensuring the day passed without incident.

Hazelwood Mine | 6 October 2015



Hazelwood Mine | 6 October 2015





Local CFA Update

GDF SUEZ





Rehabilitation works

GDF SUEZ

 MITSUI & CO.

Rehabilitation works

- Rehabilitation is a lengthy and technically challenging four part process which involves:
 - Removing the coal and overburden by truck and shovel
 - Batters are dozed back to a 3 to 1 slope
 - A metre-thick layer of clay is added to cover the coal and provide for revegetation
 - Top soil is spread before the area is seeded in autumn
- Although not visible from the Princes Freeway, significant rehabilitation work has been undertaken ahead of schedule in the Northern Batters, the area closest to Morwell. Much of this work had been undertaken prior to the 2014 Mine Fire. A further 10 hectares of works have been completed in late 2014/early 2015 on the southern batters of the Mine that can be seen from the Freeway.
- A further 14 hectares of rehabilitation works are planned along the Northern Batters, moving further to the west late this year and early 2016.



Closing

GDF SVEZ





Photo Gallery | Affirmation and Recommendation workings

GDF SUEZ

 MITSUI & CO.

Upgraded signage and concrete power poles



Forward Looking Infra-red Radar cameras



Pipework



Northern Batters | Rehabilitation work

