



ENVIRONMENT PROTECTION ACT 1970  
SECTION 20

## LICENCE

### AGL LOY YANG PTY LTD

Holder of

**Licence:** 11149

**Issued:** 24/02/1997

**Last Amended:** 22/05/2014

**ACN:** 077 985 758

**Registered Address:** LEVEL 22 101 MILLER ST  
NORTH SYDNEY NSW 2060

**Premises Address:** BARTONS LANE  
TRARALGON SOUTH VIC 3844

**Scheduled Categories:** A05 Landfills  
C01 Extractive Industry and Mining  
K01 Power Stations

**Description:** This licence applies to a premises where brown coal is mined and electricity is generated in a brown coal fired power station with generating capacity approx 2200 MW exported. The licence allows the discharge of wastes to air and water, and the deposition of waste to land.

A handwritten signature in black ink, appearing to read 'Quentin Cooke', is written over a dotted line.

QUENTIN COOKE  
Team Leader  
Development Assessments  
Delegate of the Environment Protection Authority

Issued under the *Environment Protection Act 1970*, Section 20

## PREAMBLE

### Licences

**Who we are:** The Environment Protection Authority (“EPA”) is an independent statutory authority established under the *Environment Protection Act 1970* (“the Act”). Our purpose is to protect and improve our environment by preventing harm to the environment and human health.

**Why we issue licences:** EPA is responsible for preventing or controlling pollution (including noise) and improving the quality of the environment. This responsibility includes regulating activities that may present a danger to the environment. One of the tools available to EPA is the licensing of certain scheduled premises that may present a risk to the environment.

Section 20 of the Act requires the occupier of a “scheduled premises” to obtain an EPA licence to discharge, handle, treat or dispose of waste to the environment. These premises are defined in the *Environment Protection (Scheduled Premises and Exemptions) Regulations 2007* (“the Regulations”).

**When we issue licences:** EPA will issue a licence when satisfied that an applicant has put in place measures to protect the environment. Licences allow activities to occur and set performance outcomes based on a site’s environmental risk. EPA can amend, suspend or revoke a licence in response to changes in standards, site activities or licence holder performance. Licence holders must submit an annual performance statement and pay an annual fee to EPA. All licences and performance statements are publicly available.

### Licence information and obligations

For the purposes of this licence “You” means the licence holder identified on the first page of this licence at the “premises” identified on the first page and represented in Schedule 1.

If you object to any of the licence conditions, you may have the decision reviewed by applying in writing to the Registrar, Planning and Environment Division, Victorian Civil and Administrative Tribunal (“VCAT”), 7<sup>th</sup> Floor, 55 King Street, Melbourne within 21 days of the date of issue. An application fee may be applicable when lodging an appeal with VCAT. Contact VCAT on (03) 9628 9777 for further details on fees associated with an appeal. A copy of the appeal should also be forwarded to the Manager, Development Assessments Unit, Environment Protection Authority, GPO Box 4395, Melbourne, 3001, within 7 days of lodgement of the appeal.

Interested (third) parties may also appeal against the licence within 21 days of the date of issue. The Tribunal will notify you if such appeals are received. If an appeal is lodged, this licence will not come into effect.

**Compliance:** You must comply at all times with the Act and all policies and regulations administered by EPA. Strict penalties apply for non-compliance with any part of your licence or making a false claim on your annual performance statement.

### Licence structure

**Structure:** Your licence has multiple parts:

- Environmental performance conditions - setting out the performance outcomes you must meet;
- Schedule 1A - locality plan of your premises;
- Schedule 1B - plan of premises (provided by you).

Some types of licences also contain Schedule 1C - final landfill contour plans and/or Schedule 2 - tables specifying wastes that may be accepted at the premises and the associated treatment applied to them.

## CONDITIONS

### General Conditions

- LI\_G1 Waste from the premises must not be discharged to the environment except in accordance with this licence.
- LI\_G2 You must immediately notify EPA of non-compliance with any condition of this licence.
- LI\_G3 By 30 September each year you must submit an annual performance statement to EPA for the previous financial year in accordance with the Annual Performance Statement Guidelines (EPA Publication 1320).
- LI\_G4 Documents and monitoring records used for preparation of the annual performance statement must be retained at the premises for seven years from the date of each statement.
- LI\_G5 You must implement a monitoring program that enables you and EPA to determine compliance with this licence.
- LI\_G5.2 You must implement a program to assess the effect of your discharges to air on the ability of the Latrobe Valley Air Quality Control Region to comply with Schedule 2 of the State environment protection policy (Ambient Air Quality).
- LI\_G6 You must maintain a financial assurance calculated in accordance with the EPA method.

### Amenity Conditions

- LI\_A1 Offensive odours must not be discharged beyond the boundaries of the premises.
- LI\_A2 Unacceptable noise (including vibration) must not be emitted beyond the boundaries of the premises.
- LI\_A4 Nuisance airborne particles must not be discharged beyond the boundaries of the premises.

### Waste Acceptance Conditions

Licence does not have any waste acceptance conditions.

### Waste Management Conditions

Licence does not have any waste management conditions.

### Landfill Conditions

- LI\_L1.1 You must implement a monitoring program for the landfill, verified by an environmental auditor appointed pursuant to the Act, which enables both you and EPA to determine compliance with this licence.
- LI\_L2 You must engage an environmental auditor appointed pursuant to the Act to conduct the environmental audits at the frequency specified in the verified monitoring program.
- LI\_L4 Waters contaminated by leachate must not be discharged beyond the boundaries of the premises.

## Air Conditions

LI\_DA1 Discharge of waste to air must be in accordance with the 'Discharge to Air' Table.

### Discharge to Air Table - Maximum Discharge Rates

Discharge Point No	Description of Discharge Points	Indicator	Limit Type	Unit	Discharge Limit
1 TO 15	Bubble limit for DPs 1 to 15	Particles	Maximum	g/min	43,400
1 TO 4	Bubble limit for DPs 1 to 4	Carbon monoxide	Maximum	g/min	206,000
		Chlorine compounds (as Chlorine)	Maximum	g/min	33,000
		Fluorine compounds (as HF)	Maximum	g/min	8,200
		Oxides of nitrogen (as NO <sub>2</sub> )	Maximum	g/min	114,000
		Sulfur dioxide	Maximum	g/min	400,000
		Sulfur trioxide	Maximum	g/min	33,000

g/min = grams/minute

LI\_DA1.3.3 The concentration of particles discharged from discharge points 1 to 4 must not exceed 0.24 grams per normal cubic metre (based on 3 minute averages at 12% CO<sub>2</sub>) for more than a total of 88 hours each year (aggregate total for all discharge points).

LI\_DA1.5 The annual frequency distribution of the mass discharge rate of sulfur dioxide from each of discharge points 1 to 4 must not exceed (a) a 90th percentile mass rate of 50,000 grams per minute and (b) a 50th percentile mass rate of 30,000 grams per minute.

LI\_DA2.1 Visible emissions to air other than steam must not be discharged from the premises, except in accordance with condition LI\_DA1.

## Water Conditions

LI\_DW1 Stormwater discharged from the premises must not be contaminated with waste.

LI\_DW2 Discharge of waste to surface waters must be in accordance with the 'Discharge to Water' Table.

### Discharge to Water Table - Discharge Limits

Discharge Point No	Description of Discharge Points	Indicator	Limit Type	Unit	Discharge Limit
L160	Combined SW and NW floc ponds discharge	Flow Rate	Mean Daily flow	ML/D	5
		Suspended solids	Annual Median	mg/l	40
		Suspended solids	Maximum	mg/l	60
		Total dissolved solids	Annual Median	mg/l	500
		Total dissolved solids	Maximum	mg/l	700
		Turbidity	Annual Median	NTU	30
		Turbidity	Maximum	NTU	80
		pH	Maximum	pH	8.5
		pH	Minimum	pH	6

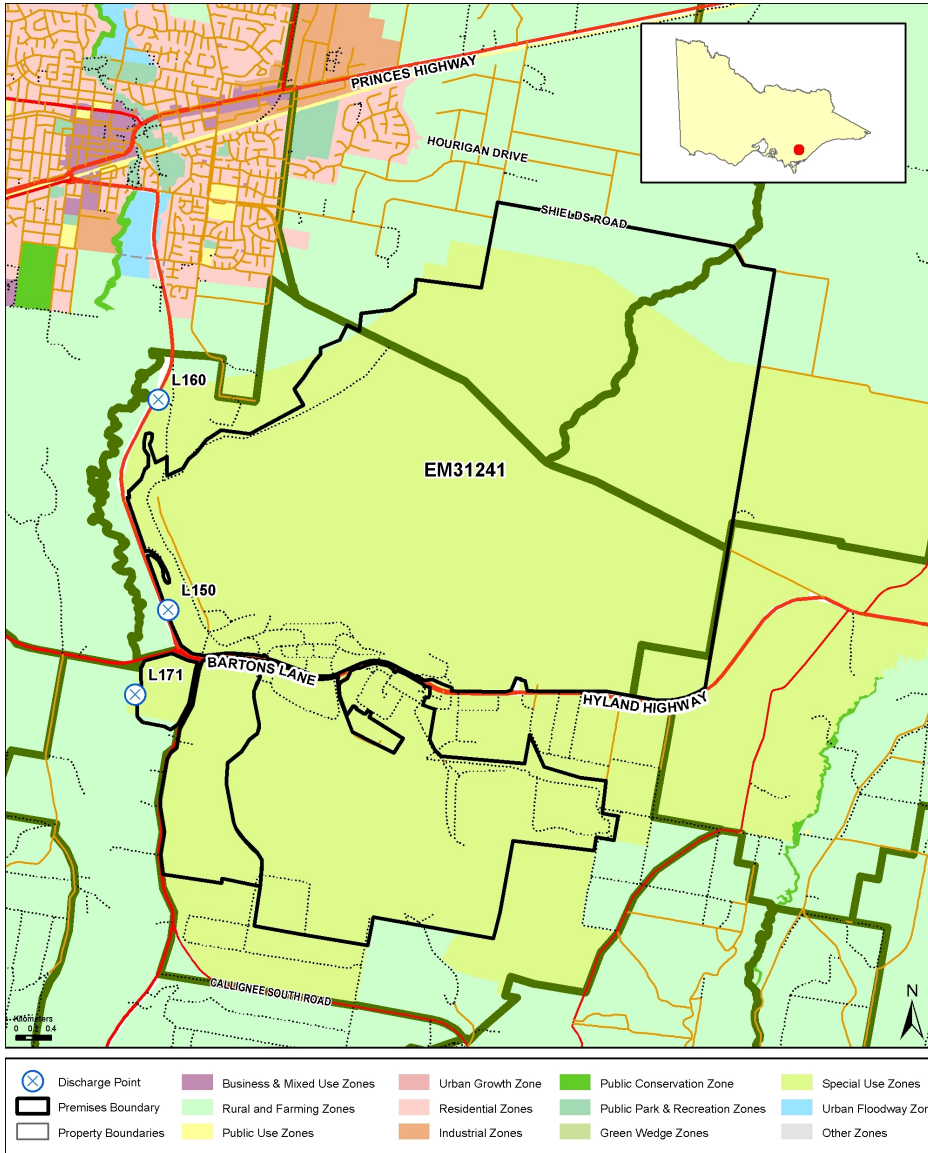
Discharge Point No	Description of Discharge Points	Indicator	Limit Type	Unit	Discharge Limit
L171	Settling pond & O/B runoff ponds disch.	Flow Rate	Mean Daily flow	ML/D	40
		Colour	Annual Median	Pt-Co	50
		Colour	Maximum	Pt-Co	70
		Suspended solids	90th Percentile	mg/l	40
		Suspended solids	Annual Median	mg/l	20
		Temperature above ambient	Above Ambient	deg	8
		Total dissolved solids	Annual Median	mg/l	500
		Total dissolved solids	Maximum	mg/l	700
		Turbidity	90th Percentile	NTU	40
		Turbidity	Annual Median	NTU	20
		pH	Maximum	pH	8.5
		pH	Minimum	pH	6

deg = Degree  
mg/l = Milligrams/litre  
ML/D = Megalitre per day  
NTU = Nephelometric Turbidity Units  
pH = pH Units  
Pt-Co = Platinum Cobalt Units

## Land Conditions

- LI\_DL1      You must not contaminate land or groundwater.
- LI\_DL1.1.1      The groundwater quality objectives for sulfate, aluminium, total dissolved solids and chloride are not required to be met within the attenuation zone, as shown in Schedule 1B.
- LI\_DL2      Discharge of wastewater to land must not adversely affect the land.
- LI\_DL3.1      Deposit of wastes generated at the premises must be in accordance with Schedule 2.

## SCHEDULE 1A - LOCALITY PLAN



Licence:	11149
Company Name:	AGL LOY YANG PTY LTD
ACN:	077 985 758
Premises Address:	BARTONS LANE, TRARALGON SOUTH VIC 3844
Issued:	24/02/1997
Last Amended:	22/05/2014
<p>Before relying on the information in this map, users should carefully evaluate its accuracy, currency, completeness and relevance for their purposes, and should obtain any appropriate professional advice relevant to their particular circumstances.</p>	

**SCHEDULE 1B - PREMISES PLAN**

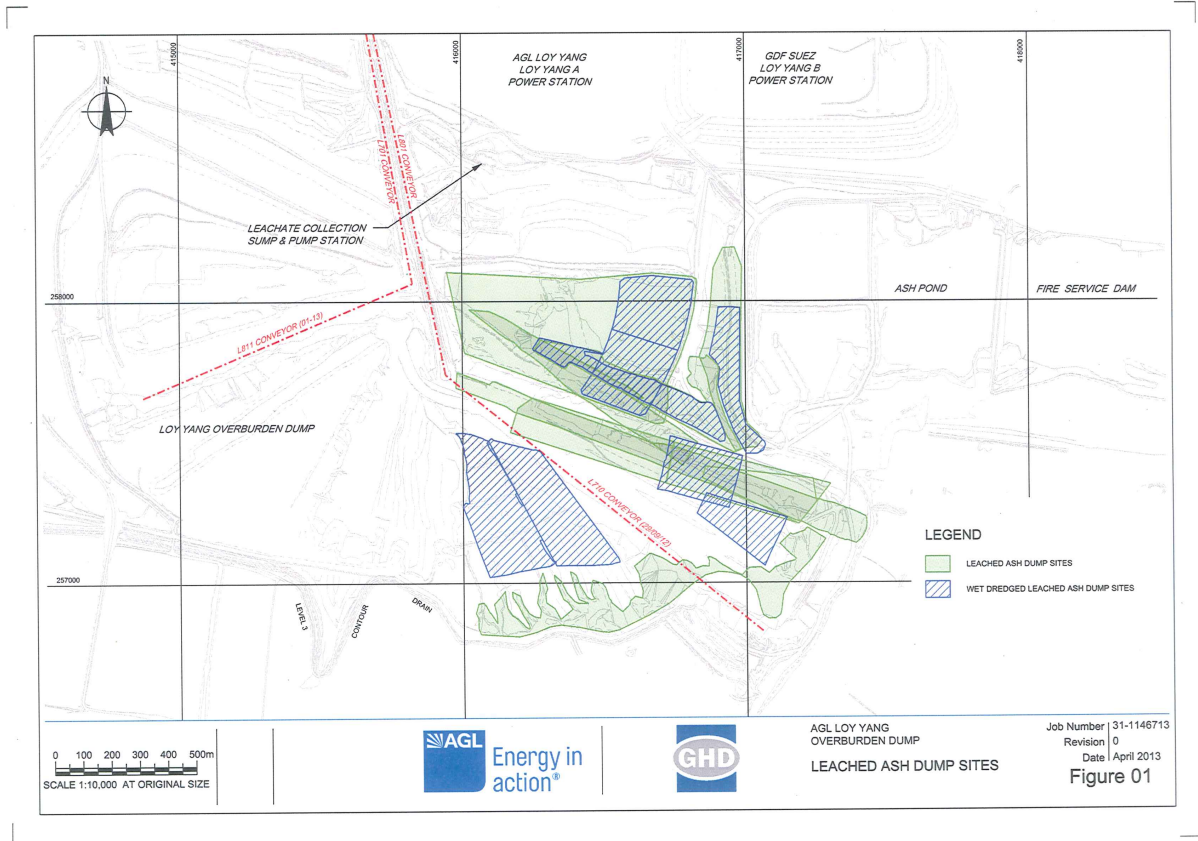


**Loy Yang Power**  
**EPA Licence EM31241**  
**Premises Boundary**

**Premises Boundary** ———  
**Attenuation Zone** ———

Licence:	11149
Company Name:	AGL LOY YANG PTY LTD
ACN:	077 985 758
Premises Address:	BARTONS LANE, TRARALGON SOUTH VIC 3844
Issued:	24/02/1997
Last Amended:	22/05/2014
<p>Before relying on the information in this map, users should carefully evaluate its accuracy, currency, completeness and relevance for their purposes, and should obtain any appropriate professional advice relevant to their particular circumstances.</p>	

## SCHEDULE 1B - PREMISES PLAN



Licence:	11149
Company Name:	AGL LOY YANG PTY LTD
ACN:	077 985 758
Premises Address:	BARTONS LANE, TRARALGON SOUTH VIC 3844
Issued:	24/02/1997
Last Amended:	22/05/2014
<p>Before relying on the information in this map, users should carefully evaluate its accuracy, currency, completeness and relevance for their purposes, and should obtain any appropriate professional advice relevant to their particular circumstances.</p>	



## SCHEDULE 2 - WASTE ACCEPTANCE TABLES

### Disposal to Landfill - General Waste

Landfill Cell	Waste Type
Cell A	Leached Ash
Cell B	Leached Ash
Cell C	Leached Ash
Cell D	Leached Ash
Cell E	Leached Ash
Cell F	Leached Ash