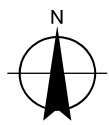
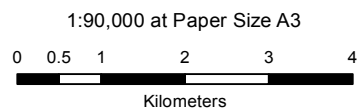
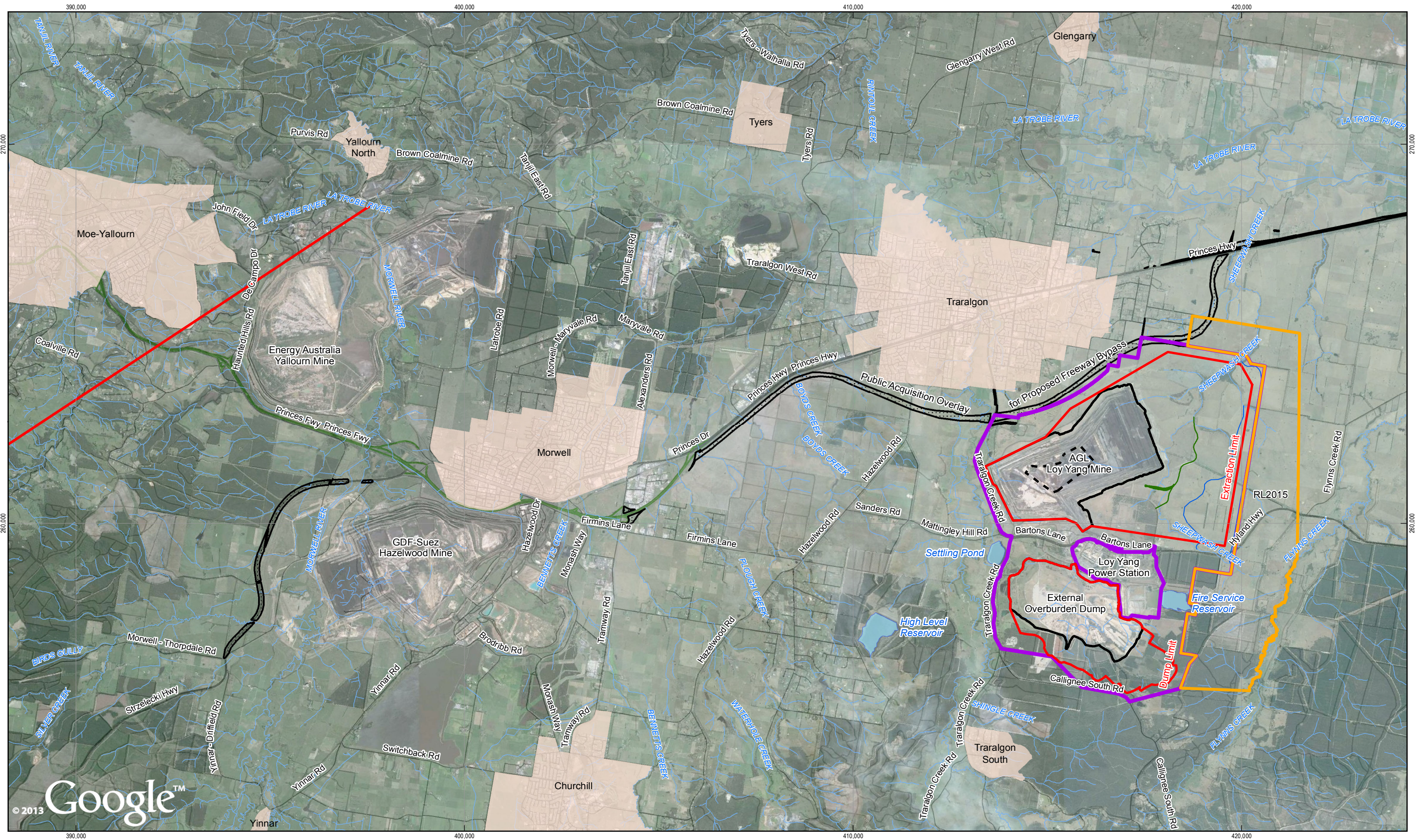


ANNEXURE B
MAP OF MIN 5189 AND RL 2015



LEGEND

- Extraction Limit and Dump Limit
- Mining Licence Boundary
- Public Acquisition Overlay
- Current Mine Base
- Current Mine Crest and Current Overburden Dump Boundary

- Future Possible Sheepwash Creek Diversion
- Existing Sheepwash Creek Diversion Stage 1
- River
- Waterbodies
- Freeway
- Highway
- Sealed road (arterial & local)
- Unsealed road
- RL2015



AGL Loy Yang Mining Licence Work Plan Variation

Job Number	31-2072315
Revision	0
Date	30 Oct 2015

Location Plan

Figure 1

G:\3111224616\GIS\Maps\Working\311224616_001_LocationPlan_Rev3.mxd

© 2015. Whilst every care has been taken to prepare this map, GHD (and DATA CUSTODIAN) make no representations or warranties about its accuracy, reliability, completeness or suitability for any particular purpose and cannot accept liability and responsibility of any kind (whether in contract, tort or otherwise) for any expenses, losses, damages and/or costs (including indirect or consequential damage) which are or may be incurred by any party as a result of the map being inaccurate, incomplete or unsuitable in any way and for any reason.

Data source: Vicmap(parcel, roads, zone, overlay,dtm20,); DEPI(min_geo_94); Google Earth Imagery. Created by:cagilbert

Barton Lane Traralgon VIC 3844 Australia T 61 3 5173 3700 F 61 3 5173 3298 W www.agl.com.au